

RECORD OF SURVEY
SOPER-WHEELER CO. PROPERTY

A PORTION OF
SEC's 21,23,26 T.21 N. R.8E. M.D.B. & M.
PLUMAS COUNTY, CALIFORNIA.
SCALE: 1" = 1000'

SURVEYOR'S CERTIFICATE:

THIS MAP CORRECTLY REPRESENTS A SURVEY MADE BY ME OR UNDER MY DIRECTION IN CONFORMANCE WITH THE REQUIREMENTS OF CHAPTER 15 OF DIVISION 3 OF THE BUSINESS AND PROFESSIONS CODE AT THE REQUEST OF THE SOPER-WHEELER COMPANY IN JANUARY 1962

Jack E. Larson
L.S. 2670

COUNTY SURVEYOR'S CERTIFICATE:

THIS MAP HAS BEEN EXAMINED FOR CONFORMANCE WITH THE REQUIREMENTS OF CHAPTER 15 OF DIVISION 3 OF THE BUSINESS AND PROFESSIONS CODE THIS 23rd DAY OF May, 1962.

James O. Plummer
COUNTY SURVEYOR

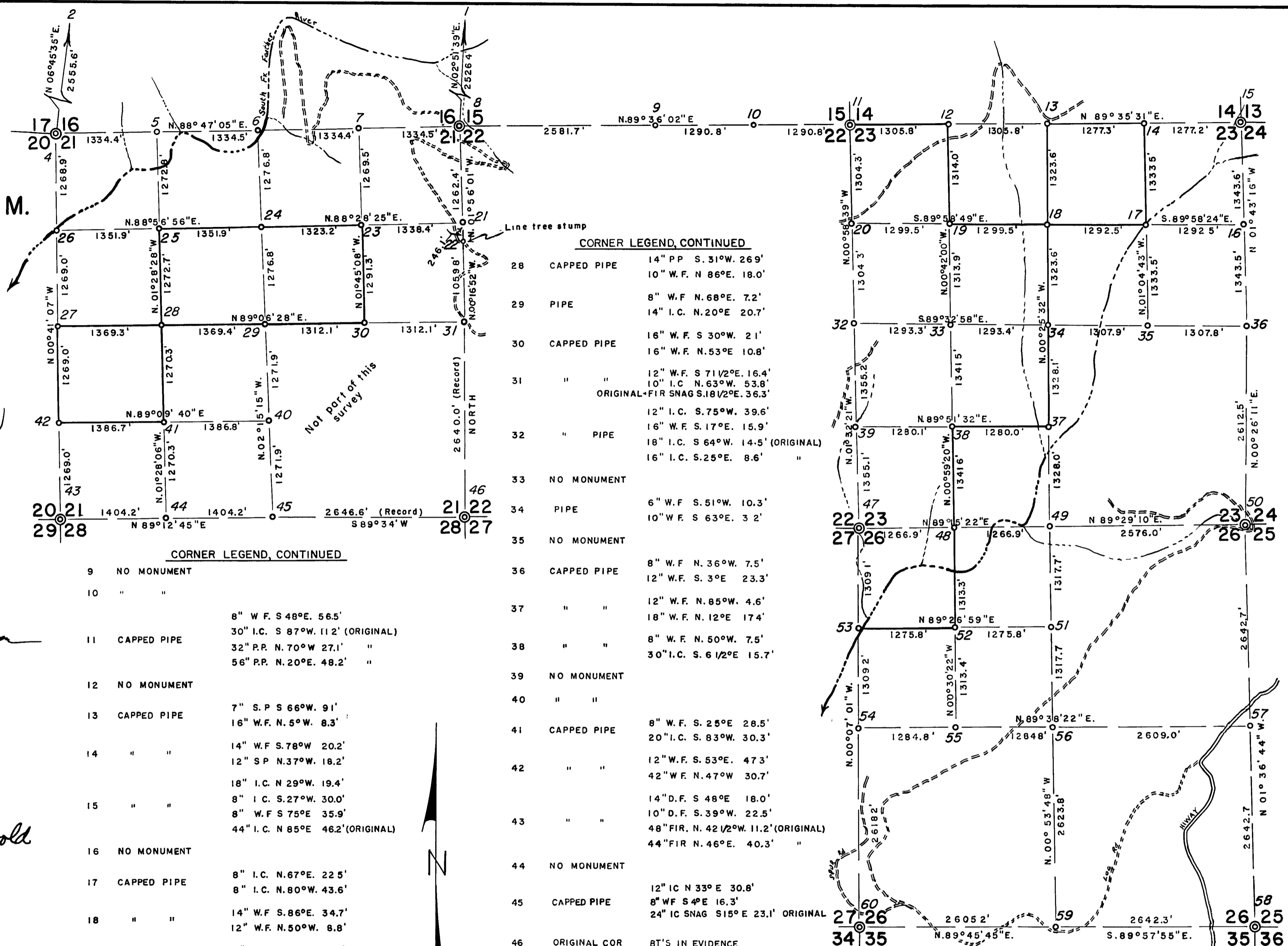
3573

RECORDER'S CERTIFICATE:

FILED FOR RECORD THIS 23rd DAY OF MAY, 1962, AT 1:45 P.M. IN BOOK 2 OF R.O.S. AT PAGE 81, AT THE REQUEST OF Jack E. Larson.

Ida Hogan Gonwold
COUNTY RECORDER

NUMBER	DESCRIPTION	CORNER	LEGEND	WITNESS TREES	SCRIBED
1	CAPPED PIPE	20"	B.O. N. 25°E. 36.3' (ORIGINAL)		
		76"	S.P. S 85°W. 88.4'		
2	"	30"	P.P. N. 50°E. 57.4'		
		20"	FIR WEST 25.1'		
3	"	30"	P.P. N. 35 1/2°E. 27.1'		
		22"	PP S. 48°W. 70.0'		
4	"	9"	W.F. S. 66°E. 10.0'		
		10"	W.F. N. 53°E. 36.2'		
		7"	S.P. N 51°W 4.6'		
		8"	I.C. S. 28°W. 28.2'		
5	NO MONUMENT				
6	CAPPED PIPE	18"	I.C. S. 51°W. 26.9'		
		20"	W.F. N. 44°W 74.5'		
7	NO MONUMENT				
8	CAPPED PIPE	26"	D.F. N 70°E. 27.0'		
		14"	D.F. N. 26°W. 74.0'		
		10"	W.F. S 40°E. 56.8'		
		20"	D.F. S 10°W. 52.2'		



CORNER LEGEND, CONTINUED

9	NO MONUMENT		
10	"		
11	CAPPED PIPE	8"	W.F. S 48°E. 56.5'
		30"	I.C. S 87°W. 11.2' (ORIGINAL)
		32"	P.P. N. 70°W 27.1' "
		56"	P.P. N. 20°E. 48.2' "
12	NO MONUMENT		
13	CAPPED PIPE	7"	S.P. S 66°W. 9.1'
		16"	W.F. N. 5°W. 8.3'
14	"	14"	W.F. S. 78°W. 20.2'
		12"	S.P. N. 37°W. 18.2'
15	"	18"	I.C. N 29°W. 19.4'
		8"	I.C. S. 27°W. 30.0'
		8"	W.F. S 75°E. 35.9'
		44"	I.C. N 85°E. 46.2' (ORIGINAL)
16	NO MONUMENT		
17	CAPPED PIPE	8"	I.C. N. 67°E. 22.5'
		8"	I.C. N. 80°W. 43.6'
18	"	14"	W.F. S. 86°E. 34.7'
		12"	W.F. N. 50°W. 8.8'
19	"	6"	W.F. S. 12°E. 6.9'
		16"	W.F. N. 34°W. 46.8'
20	NO MONUMENT		
21	"		
22	60"	RP STUMP (ORIGINAL LINE TREE)	
23	CAPPED PIPE	12"	I.C. S. 57°E. 17.9'
		10"	I.C. N. 45°E. 1.9'
24	PIPE	14"	B.O. S. 7°E. 8.3'
		14"	W.F. S. 70°W. 8.7'
25	CAPPED PIPE	12"	W.F. N. 5°E. 7.9'
		20"	W.F. S. 42°E. 6.6'
26	NO MONUMENT		
27	CAPPED PIPE	18"	W.F. S. 35°W. 14.2'
		20"	W.F. S. 43°E. 26.6'

CORNER LEGEND, CONTINUED

28	CAPPED PIPE	14"	PP S. 31°W. 26.9'
		10"	W.F. N. 86°E. 18.0'
29	PIPE	8"	W.F. N. 68°E. 7.2'
		14"	I.C. N. 20°E. 20.7'
30	CAPPED PIPE	16"	W.F. S 30°W. 2.1'
		16"	W.F. N. 53°E. 10.8'
31	"	12"	W.F. S 71 1/2°E. 16.4'
		10"	I.C. N. 63°W. 53.8'
			ORIGINAL-FIR SNAG S. 18 1/2°E. 36.3'
32	"	12"	I.C. S. 75°W. 39.6'
	PIPE	16"	W.F. S. 17°E. 15.9'
		18"	I.C. S 64°W. 14.5' (ORIGINAL)
		16"	I.C. S. 25°E. 8.6' "
33	NO MONUMENT		
34	PIPE	6"	W.F. S. 51°W. 10.3'
		10"	W.F. S 63°E. 3.2'
35	NO MONUMENT		
36	CAPPED PIPE	8"	W.F. N. 36°W. 7.5'
		12"	W.F. S. 3°E. 23.3'
37	"	12"	W.F. N. 85°W. 4.6'
		18"	W.F. N. 12°E. 17.4'
38	"	8"	W.F. N. 50°W. 7.5'
		30"	I.C. S. 6 1/2°E. 15.7'
39	NO MONUMENT		
40	"		
41	CAPPED PIPE	8"	W.F. S. 25°E. 28.5'
		20"	I.C. S. 83°W. 30.3'
42	"	12"	W.F. S. 53°E. 47.3'
		42"	W.F. N. 47°W. 30.7'
43	"	14"	D.F. S 48°E. 18.0'
		10"	D.F. S. 39°W. 22.5'
		48"	FIR. N. 42 1/2°W. 11.2' (ORIGINAL)
		44"	FIR. N. 46°E. 40.3' "
44	NO MONUMENT		
45	CAPPED PIPE	12"	IC N 33°E. 30.8'
		8"	WF S 4°E. 16.3'
		24"	IC SNAG S 15°E. 23.1' ORIGINAL
46	ORIGINAL COR		BT'S IN EVIDENCE
47	CAPPED PIPE	5"	DF S 65°W. 4.8'
		12"	DF S 60°E. 7.5'
		30"	IC S 70°E. 16.5' ORIGINAL
		18"	WF N 11°W. 25.3'
		16"	WF N 68°E. 9.3'
48	CAPPED PIPE	14"	DF S 87°W. 19.6'
		12"	WF SOUTH. 29.4'
49	CAPPED PIPE	14"	SP N 35°E. 43.8'
		10"	DF S 75°W. 23.5'
50	CAPPED PIPE	24"	DF S 70°W. 42.2'
		38"	SP S 30°E. 52.8'
51	NO MONUMENT		
52	CAPPED PIPE	8"	WF N 85°E. 33.8'
		10"	WF N 31°W. 7.2'

CORNER LEGEND, CONTINUED

53	CAPPED PIPE	8"	IC S 7°W. 6.3'
		26"	SP N 73°W. 16.7'
54	CAPPED PIPE	20"	WF N 59°E. 26.9'
		18"	IC S 85°W. 17.9'
55	NO MONUMENT		
56	NO MONUMENT		
57	CAPPED PIPE	14"	IC S 58°W. 31.7'
		8"	IC N 13°E. 20.8'
58	CAPPED PIPE	42"	FIR N 30°W. 25.7' ORIGINAL
59	STONE MKD. 1/4	16"	WF S 68°W. 19.1'
		14"	IC N 16°E. 24.9'
60	1" PIPE ORIGINAL	20"	DOGWOOD SNAG S 15°W. 4.6'
		28"	SP S 50°E. 29.0'