

# T.28 N., R.6 E., M.D.B & M.

Fd. Mkd. Stone Set 3/4" Pipe in md.  
 Fd. 50' Y. Pine B.T. N. 38° 52' W. 491.0  
 Scbd. 9" Fir S. 62° W. 10.5  
 Scbd. 11" Fir N. 80° E. 14.0

Set 3/4" Pipe in md.  
 Fd. dn. Fir B.T. N. 67° E. 4.6  
 Fd. Fir B.T. Stump N. 55° 40' W. 68.6  
 Scbd. 14" S. Pine N. 49° E. 11.3

Fd. Mkd. Stone Set 3/4" Pipe in md.  
 Fd. S. Pine B.T. Stump S. 39° W. 34.2  
 Fd. 44' Cedar B.T. S. 10 1/2° E. 538.2

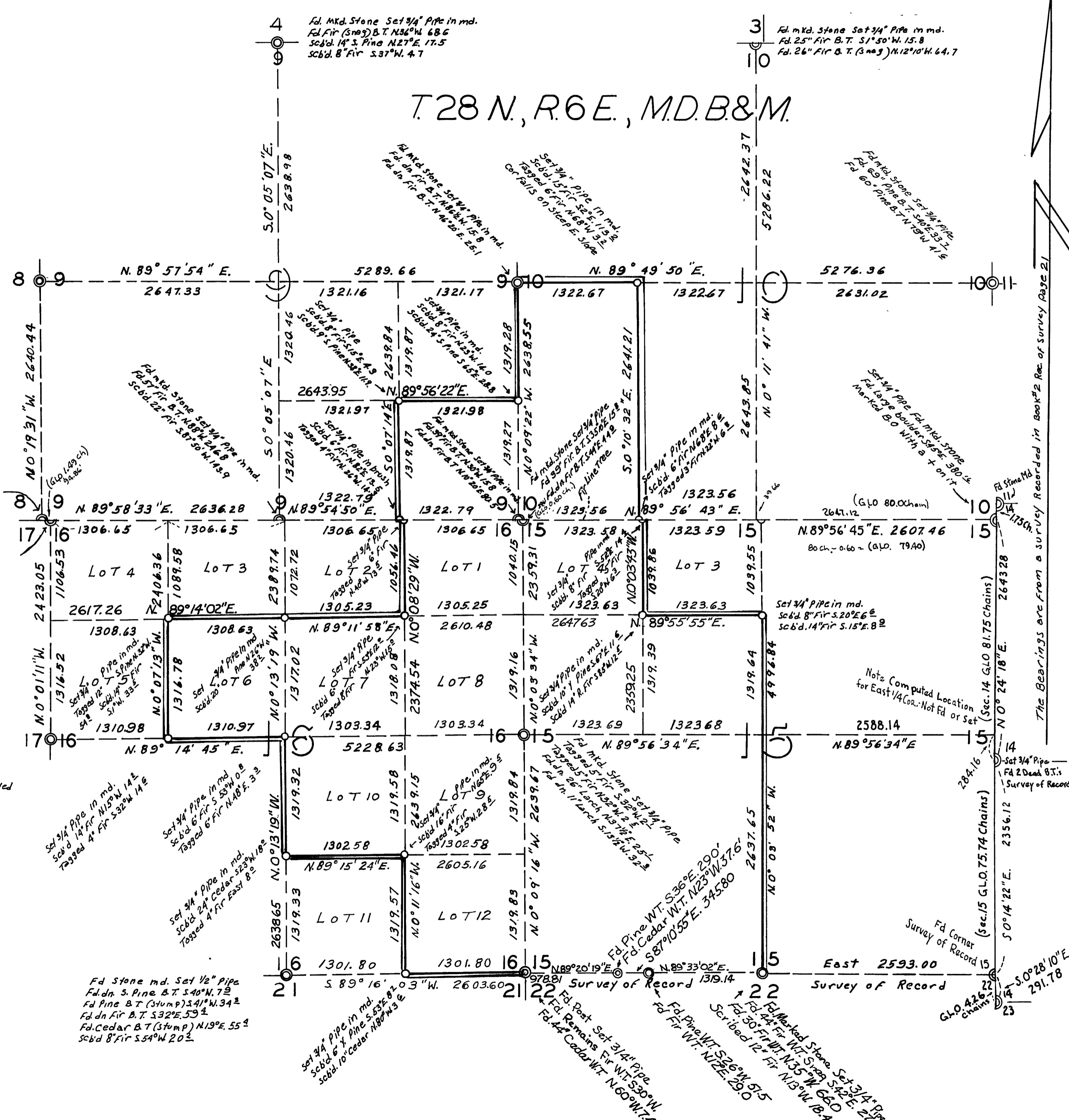
Fd. Collins Pine Capped Pipe  
 Fd. dn. Cedar Tree cor.  
 (Not in original position)  
 Fd. 36' Y. Pine B.T. S. 80° E. 5.2  
 (Called N. 50° E. 3.2)  
 Fd. S. Pine B.T. (Stump) S. 60° W. 194  
 (Called S. 40° W. 134)  
 This Cor. was set by using the called  
 distance to govern. The called  
 bearing does not fit.

Set 3/4" Pipe in md.  
 Scbd. 14" Fir N. 50° W. 14.2  
 Scbd. 4" Fir S. 32° W. 14.6

Set 3/4" Pipe in md.  
 Scbd. 6" Fir S. 50° W. 0.8  
 Scbd. 6" Fir N. 48° E. 3.2

Set 3/4" Pipe in md.  
 Scbd. 24" Cedar S. 23° W. 18.2  
 Scbd. 4" Fir East 8°

Fd. Stone md. Set 1/2" Pipe  
 Fd. dn. S. Pine B.T. S. 40° W. 7.2  
 Fd. Pine B.T. (Stump) S. 41° W. 34.2  
 Fd. dn. Fir B.T. S. 32° E. 3.2  
 Fd. Cedar B.T. (Stump) N. 19° E. 55.2  
 Scbd. 8" Fir S. 54° W. 20.2



**LEGEND**  
 Scale - 1 inch = 800 Feet  
 Shows Corners Found  
 Shows Corners Set & Tagged L.S. # 2322  
 Lines shown thus are lines between private and government lands posted and painted to U.S. FOREST SERVICE specifications.

**SURVEYOR'S CERTIFICATE**  
 This map correctly represents a survey made by me or under my direction in conformance with the requirements of Chapter 15 of Division 3 of the Business and Professions Code at the request of SHASTA FORESTS COMPANY.  
 Loren J. Sargent  
 L.S. # 2322

2973  
**COUNTY RECORDER'S CERTIFICATE**  
 Filed for record this 11 day of February, 1962, at 10:51am in Book 2 of R.O.S. at page 29, at the request of Loren J. Sargent.  
 Hu. Hogan, Recorder  
 County Recorder, County of Plumas, State of California

**COUNTY SURVEYOR'S CERTIFICATE**  
 This map has been examined for conformance with the requirements of Chapter 15 of Division 3 of The Business and Professions Code this 11th day of Feb., 1962.  
 James D. Monagan  
 County Surveyor, County of Plumas, State of California.

**SURVEY FOR**  
**WALTER W. WALKER ETAL**  
 OF CERTAIN SUBDIVISION LINES IN  
 SECS. 9-10-15 & 16, T.28 N., R. 6 E., M.D.B & M.  
 PLUMAS COUNTY, CALIFORNIA

LOREN J. SARGENT L.S.2322

Date: August, 1962 SCALE 1" = 800 Ft.