

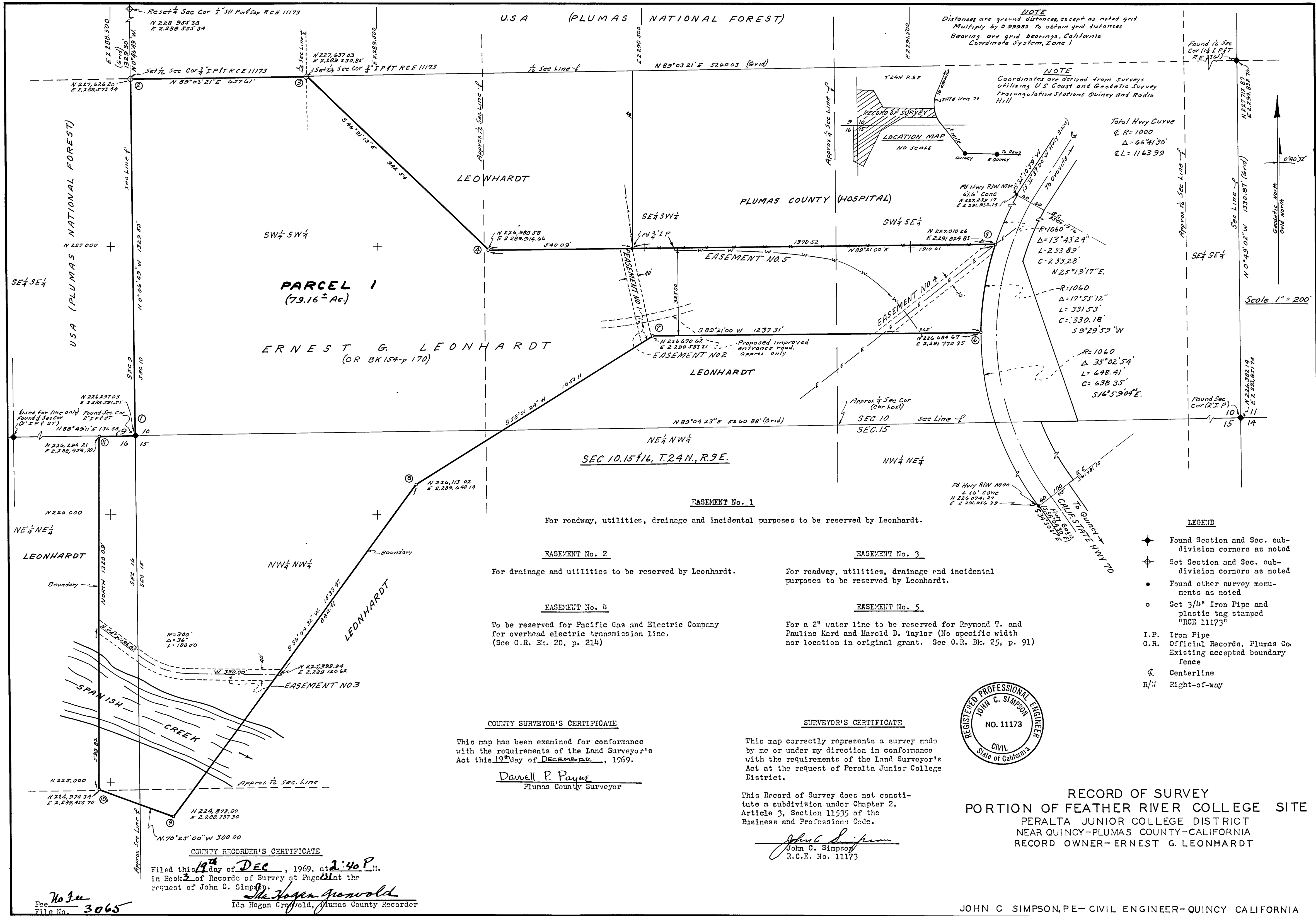
USA (PLUMAS NATIONAL FOREST)

NOTE
Distances are ground distances, except as noted grid
Multiply by 0.99983 to obtain grid distances
Bearings are grid bearings, California
Coordinate System, Zone 1

NOTE
Coordinates are derived from surveys
utilizing U.S. Coast and Geodetic Survey
triangulation stations Quincy and Radio
Hill

Total Hwy Curve
R=1000
Δ=66°41'30"
L=1163.99

Scale 1" = 200'



PARCEL 1
(79.16± Ac.)
ERNEST G. LEONHARDT
(OR BK 154-p 170)

For roadway, utilities, drainage and incidental purposes to be reserved by Leonhardt.

EASEMENT No. 2
For drainage and utilities to be reserved by Leonhardt.

EASEMENT No. 4
To be reserved for Pacific Gas and Electric Company
for overhead electric transmission line.
(See O.R. Bk. 20, p. 214)

COUNTY SURVEYOR'S CERTIFICATE
This map has been examined for conformance
with the requirements of the Land Surveyor's
Act this 19th day of December, 1969.

Darell P. Payne
Plumas County Surveyor

EASEMENT No. 3
For roadway, utilities, drainage and incidental
purposes to be reserved by Leonhardt.

EASEMENT No. 5
For a 2" water line to be reserved for Raymond T. and
Pauline Kard and Harold D. Taylor (No specific width
nor location in original grant. See O.R. Bk. 25, p. 91)

SURVEYOR'S CERTIFICATE
This map correctly represents a survey made
by me or under my direction in conformance
with the requirements of the Land Surveyor's
Act at the request of Peralta Junior College
District.

This Record of Survey does not consti-
tute a subdivision under Chapter 2,
Article 3, Section 11535 of the
Business and Professions Code.
John C. Simpson
John C. Simpson
R.C.E. No. 11173



RECORD OF SURVEY
PORTION OF FEATHER RIVER COLLEGE SITE
PERALTA JUNIOR COLLEGE DISTRICT
NEAR QUINCY-PLUMAS COUNTY-CALIFORNIA
RECORD OWNER-ERNEST G. LEONHARDT

JOHN C SIMPSON, PE-CIVIL ENGINEER-QUINCY CALIFORNIA

COUNTY RECORDER'S CERTIFICATE
Filed this 19th day of DEC, 1969, at 2:40 P.M.
in Book 3 of Records of Survey at Page 31 at the
request of John C. Simpson.
Ida Hogan Crawford
Ida Hogan Crawford, Plumas County Recorder

No Fee
File No. 3065

- LEGEND**
- ◆ Found Section and Sec. sub-division corners as noted
 - ⊕ Set Section and Sec. sub-division corners as noted
 - Found other survey monuments as noted
 - Set 3/4" Iron Pipe and plastic tag stamped "RCE 11173"
 - I.P. Iron Pipe
 - O.R. Official Records, Plumas Co. Existing accepted boundary fence
 - ⊗ Centerline
 - R/W Right-of-way