

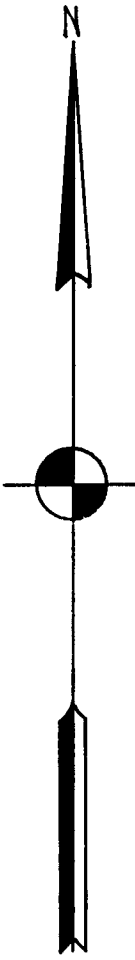
NOTES:

Basis of Bearings: Bearing shown hereon are referred to the Record of Survey filed in Book 3 of Record of Surveys at page 46, Plumas County Records.

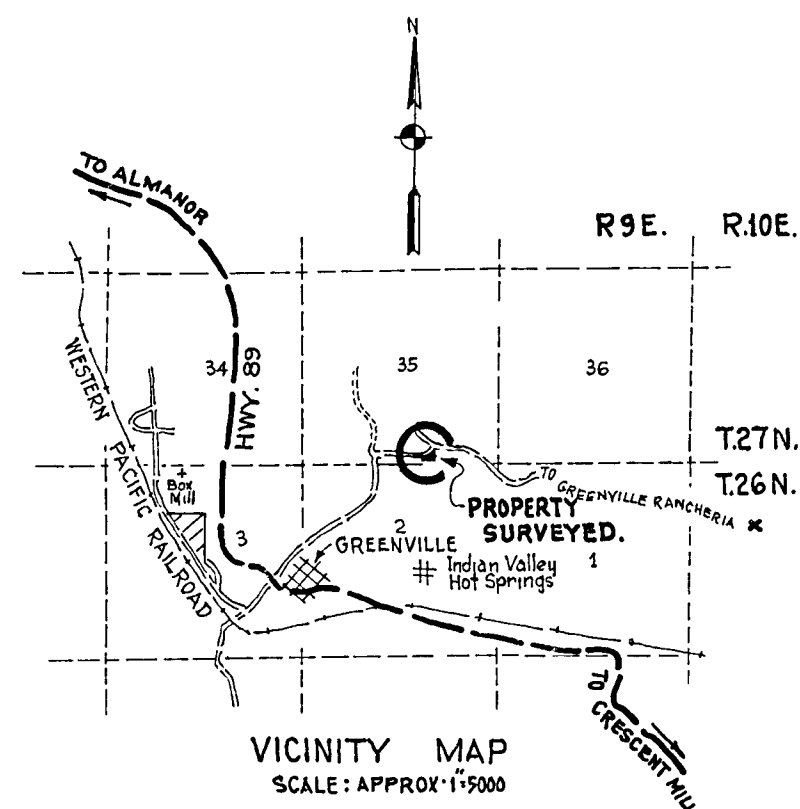
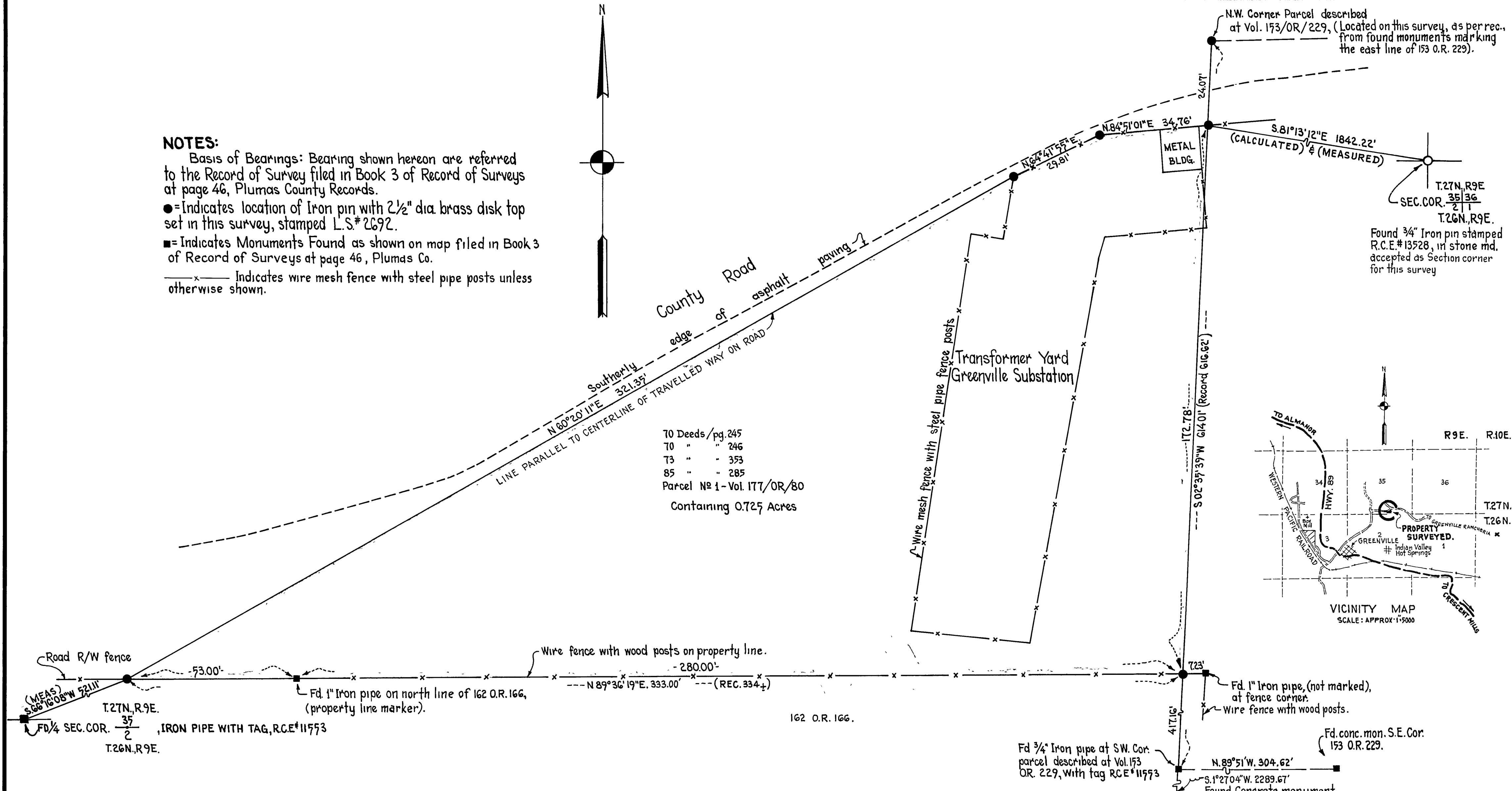
● = Indicates location of Iron pin with 2 1/2" dia. brass disk top set in this survey, stamped L.S.#2692.

■ = Indicates Monuments Found as shown on map filed in Book 3 of Record of Surveys at page 46, Plumas Co.

—x— Indicates wire mesh fence with steel pipe posts unless otherwise shown.



70 Deeds / pg. 245
 70 " " 246
 73 " " 353
 85 " " 285
 Parcel No 1 - Vol. 177/OR/80
 Containing 0.725 Acres



SURVEYOR'S CERTIFICATE
 This map correctly represents a survey made by me or under my direction in conformance with the requirements of the Land Surveyor's Act at the request of Pacific Gas and Electric Co.

Lewis J. Dewey
 Lewis J. Dewey, L.S.#2692

COUNTY SURVEYOR'S CERTIFICATE
 This map has been examined for conformance with the requirements of the Land Surveyor's Act this 31st day of December 1969.

Darrell P. Payne
 Darrell P. Payne, R.C.E.#8596
 Plumas County Surveyor

RECORDER'S CERTIFICATE
 Filed this 31st day of Dec. 1969, at 1:51 P.M. in Book 3 of R.S. at page 133, at the request of Pacific Gas & Electric Co.

John Hagen-Gronwald
 County Recorder

Serial No. 3165 500

RECORD OF SURVEY
 FOR
PACIFIC GAS & ELECTRIC CO.

BEING A PORTION OF THE SE 1/4 OF SECTION 35, T.27N., R.9E., M.D.B. & M.
 PLUMAS COUNTY CALIFORNIA
 PREPARED BY: ST. MAURICE - HELMKAMP - MUSSER

SCALE: 1" = 20'
 DATE: AUG. 1969
 L.R.M.
 69-639