

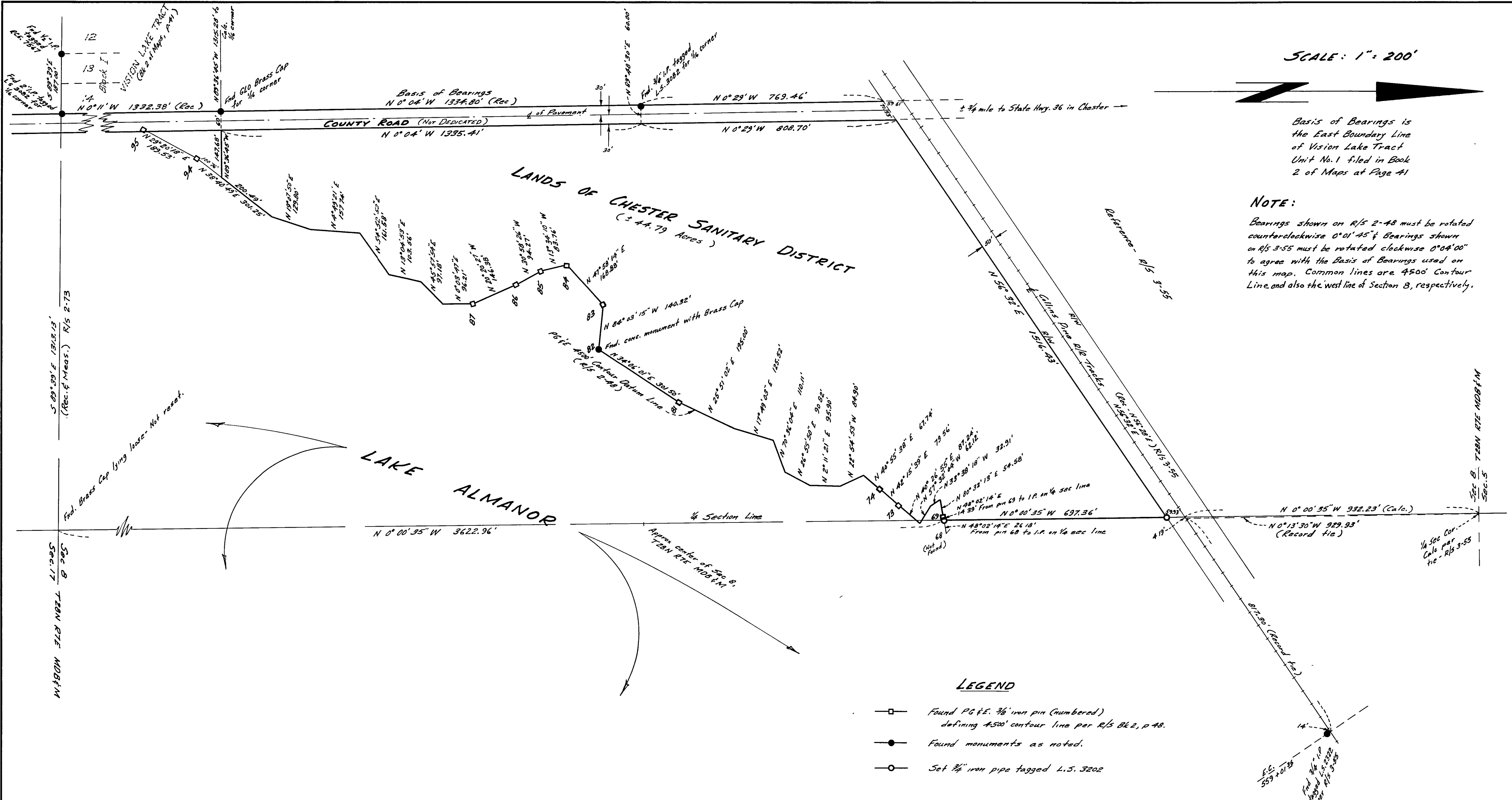
SCALE: 1" = 200'



Basis of Bearings is the East Boundary Line of Vision Lake Tract Unit No. 1 filed in Book 2 of Maps at Page 41

NOTE:

Bearings shown on R/S 2-48 must be rotated counterclockwise 0°01'45" & bearings shown on R/S 3-55 must be rotated clockwise 0°04'00" to agree with the Basis of Bearings used on this map. Common lines are 4500' Contour Line and also the west line of Section 8, respectively.



LEGEND

- Found PG & E. 3/8" iron pin (numbered) defining 4500' contour line per R/S B62, p 48.
Found monuments as noted.
Set 3/8" iron pipe tagged L.S. 3202

CERTIFICATES:

This map correctly represents a survey made under my direction in conformance with the requirements of the Land Surveyor's Act at the request of the Chester Sanitary District in September, 1970.

Paul E. Simpson, Licensed Land Surveyor No. 3202

This map has been examined for conformance with the requirements of the Land Surveyor's Act this 22nd day of October, 1970.

Darrell P. Payne, RCE 8536, Plumas County Surveyor

Filed this 21st day of October, 1970 at 10:45 A.M. in Book 3 of Records of Surveys at Page 141 at the request of Paul E. Simpson.

Fee: \$ No Fee
File No. 2724
Ida Hogan Gronwald, Plumas County Recorder

RECORD OF SURVEY TO ESTABLISH THE EAST BOUNDARY OF LANDS OF CHESTER SANITARY DISTRICT IN A PORTION OF THE W 1/2 OF SECTION 8, T28N R7E MDB & M PLUMAS COUNTY, CALIFORNIA

SCALE: 1" = 200'
PAUL E. SIMPSON, & ASSOCIATES - ENGINEERS & SURVEYORS
SUSANVILLE - CALIFORNIA