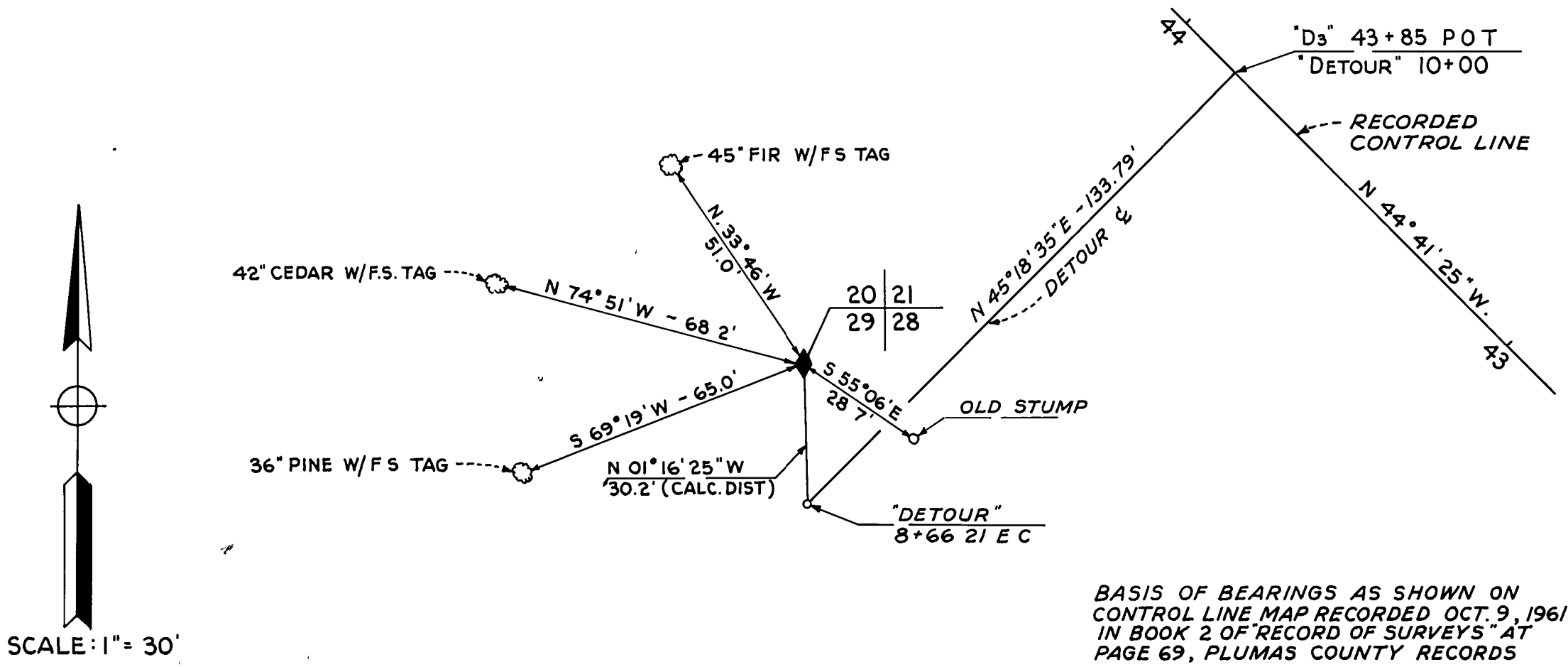


SURVEY BY THE DIVISION OF HIGHWAYS
TO PERPETUATE SECTION CORNERS

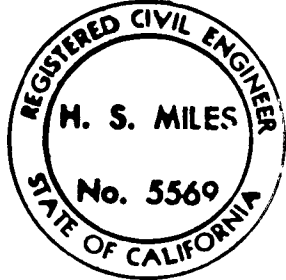
IN PLUMAS CO. T.27N.,R.8E.,M.D.M.
CORNER COMMON TO SECTIONS 20,21,28&29

G.L.O. NOTES			AS PERPETUATED			G.L.O. NOTES			AS PERPETUATED		
DATE	JULY 6, 1904		DATE	MAY 27, 1963		DATE			DATE		
MON.	FOUND REMAINS OF A ROTTEN POST WITH BEARING TREES AS DESCRIBED BY THE SURVEYOR GENERAL.		MON.	FOUND IRON RAIL IN M.O.R. WITH F.S. TAG.		MON.			MON.		
	TO RE-ESTABLISH - SET A LAVA STONE 12"x7"x7" IN THE GROUND.		REF.	ESTABLISHED 3 NEW WITNESS TREES PLUS A TIE TO OLD STUMP OF FORMER WITNESS TREE.		REF.			REF.		
	2 NOTCHES ON S. & 4 NOTCHES ON E. FROM WHICH A -			A PINE 36" DIA. BEARS S.69°19'W. 65.0'							
REF.	FIR 22" DIA. BEARS N.75°E. 90 LINKS.			A CEDAR 42" DIA. BEARS N.74°51'W. 68.2'							
	SUGAR PINE 15" DIA BEARS S.54°E. 45 LINKS.			A FIR 45" DIA. BEARS N.33°46'W. 51.0'							
	OLD CEDAR 36" DIA. BEARS S.30°W. 24 LINKS.			FRONT OF OLD STUMP BEARS S.55°06'E. 28.7'							
	FIR 40" DIA. BEARS N.33°30'W. 80 LINKS.										



THIS MAP CORRECTLY REPRESENTS A SURVEY MADE BY ME OR UNDER MY DIRECTION IN CONFORMANCE WITH THE REQUIREMENTS OF THE LAND SURVEYORS ACT AT THE REQUEST OF CALIFORNIA DIVISION OF HIGHWAYS IN MAY, 1963

H.S. Miles
H.S. MILES, RE 5569



THIS MAP HAS BEEN EXAMINED FOR CONFORMANCE WITH THE REQUIREMENTS OF THE LAND SURVEYORS ACT THIS 20th DAY OF September 1965

James P. Hansen
COUNTY SURVEYOR

1657
FILED FOR RECORD THIS 20th DAY OF SEPT 1965 AT 4:45 PM IN BOOK 3 OF R.O.S. AT PAGE 40 AT THE REQUEST OF J.F. Flanagan
John Flanagan
COUNTY RECORDER