

DEPENDENT RESURVEY

OF

HALSEY PLACER MINE (M.S. 2529)

AND

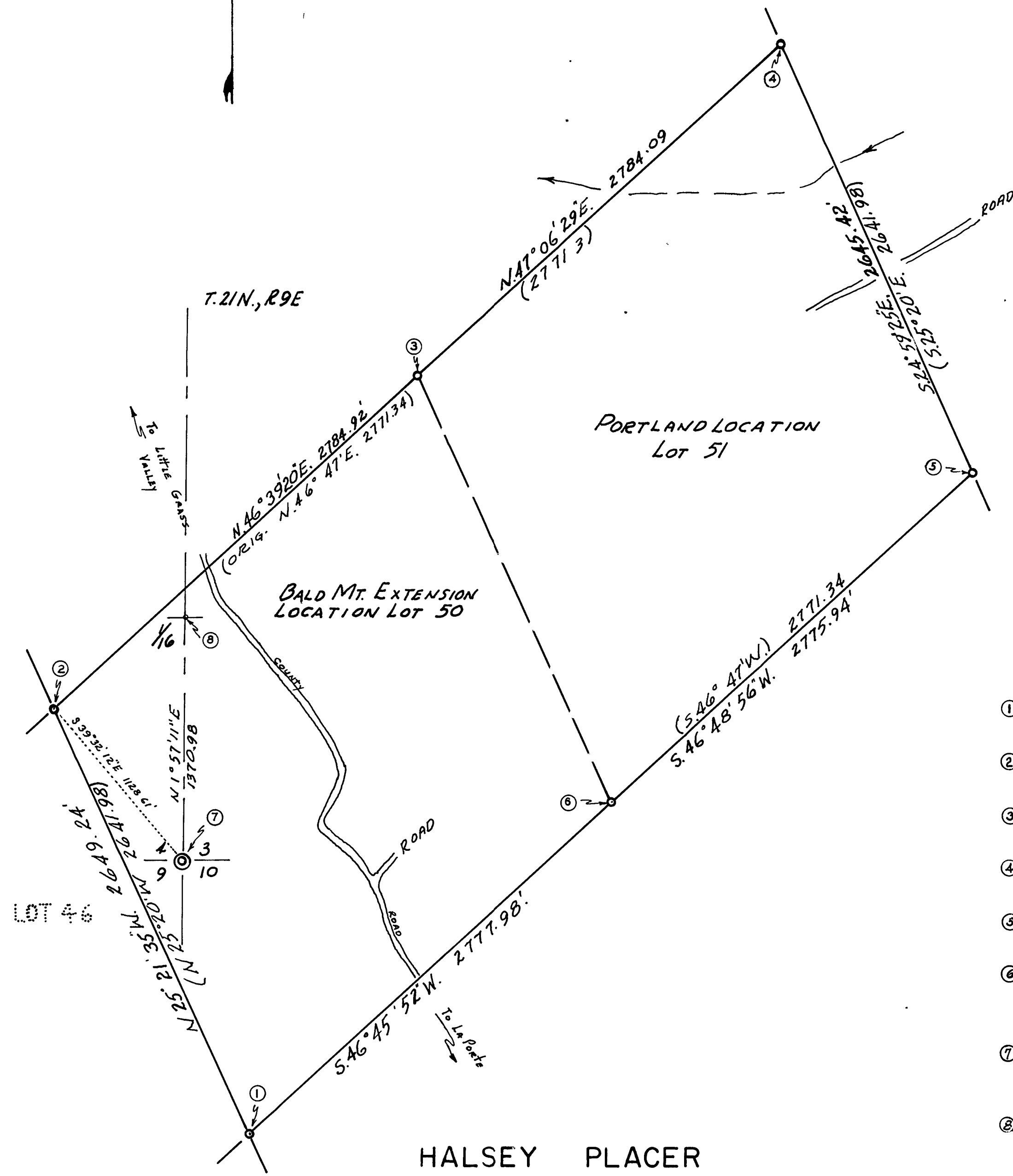
BALD MTN. PLACER (M.S. 1238)

Within Sections 3-4-9-10-16 Township 21 North, Range 9 East, M.D.B. & M.

Scale 1"=500'

August 1965

BASIS OF BEARINGS
ARE DETERMINED
FROM SOLAR OBSERVATIONS



Certificates

SURVEYOR'S CERTIFICATE

This map correctly represents a survey made by me or under my direction in conformance with the requirements of the "Land Surveyor's Act" at the request of W.A. ANDERSON in OCTOBER, 1965.

A. H. DeVoe
A. H. DeVoe - L.S. 3079

COUNTY SURVEYOR'S CERTIFICATE

This map has been examined for conformance with the requirements of the "Land Surveyor's Act" this 8th day of December, 1965.

James H. Henagan
Plumas County Surveyor

RECORDER'S CERTIFICATE

Filed for record this 8th day of December, 1965, at 2:30 P.M. in Book 3 of Surveys at Page 52, at the request of A. H. DeVoe.

\$4.00

Ida Noyan Kraussel
Plumas County Recorder
By [Signature], Deputy

Corner Notes

Note: All Monuments Established ARE 2" BRASS CAP CEMENTED IN 2" PIPE UNLESS OTHERWISE INDICATED.

- ① LOT 50 SW Cap stamped BMECSW - Pipe set in old rock mound - Original BT 24" Fir stump S38°04'W. 43.6 Ft. Ase Face visible New BT 8" Incense Cedar N4°W. 26.0 Ft. Scribed BMEC BT
- ② LOT 50 NW. Cap stamped BMECNWC - Build Rock mound at base of pipe - Original BT. 18 W. Fir S. 71°35' E. 14.7 ± Scribing legible - Tree is down in poor condition - New BT. 12" W. Fir bears West 13.06 Ft. Scribed BMEC BT
- ③ LOT 50 NE. Cap stamped BMECNEC - PCNWC - Build Rock mound at base of Pipe. Original BTs. 60" Pine stump N32°21' E. 38.3 Ft and 14" decayed Fir stump S 32°59' W 4.3 0 Ft. New BT: 8" W. Fir S89° E. 10.45 Ft. Scribed PCNW BT.
- ④ LOT 51 NE. Cap stamped PCNEC - Pipe set in old rock mound - Original BTs. 68 S. pine stump S48°23' W. 77.9 Ft. and 48 S. pine stump N. 12°08' E. 33.5 Ft. Old Ase Face on stump - New BT: 10" W. Fir S8° E 44.2 Ft. scribed PCNEC BT
- ⑤ LOT 51 SE. Cap stamped PCSEC - Pipe set in old rock mound - No evidence of original BTs found: New. BT: 16" Sugar pine N74° W 53 Ft scribed PCSEC BT
- ⑥ LOT 51 SW - LOT 50 SE. Cap stamped BMECSEC - PCSWC - Pipe set in old rock mound - Original BTs: 40" W. Fir snag N68°20' E. 24.75 Ft. Face closed and a 36" P. pine S. 77°40' W. 14.15 Ft. ± Scribing legible - Tree is in poor condition. Old shaft bears N. 6°56' W. 33.0 Ft. New. BT: 12" W. Fir. N69° W. 32.95 Ft. scribed BMEC BT
- ⑦ SECTION CORNER 3-4-9-10 - A Steel Cap on 3/4" pipe set in rock mound - Original BT. 30" W. Fir stump N87° W 49.5 Ft. Scribing legible on Bark - Stump is in Poor Condition - New BTs: 14" W. Fir N. 42°30' W. 25.4 Ft. Scribed SA BT. and a 13.5" W. Fir S. 81° W. 47.5 Ft Scribed S.9 BT.
- ⑧ SOUTH 1/16 CORNER SECTION 4#3. Pipe in rock mound set by L.S. 2682

HALSEY PLACER