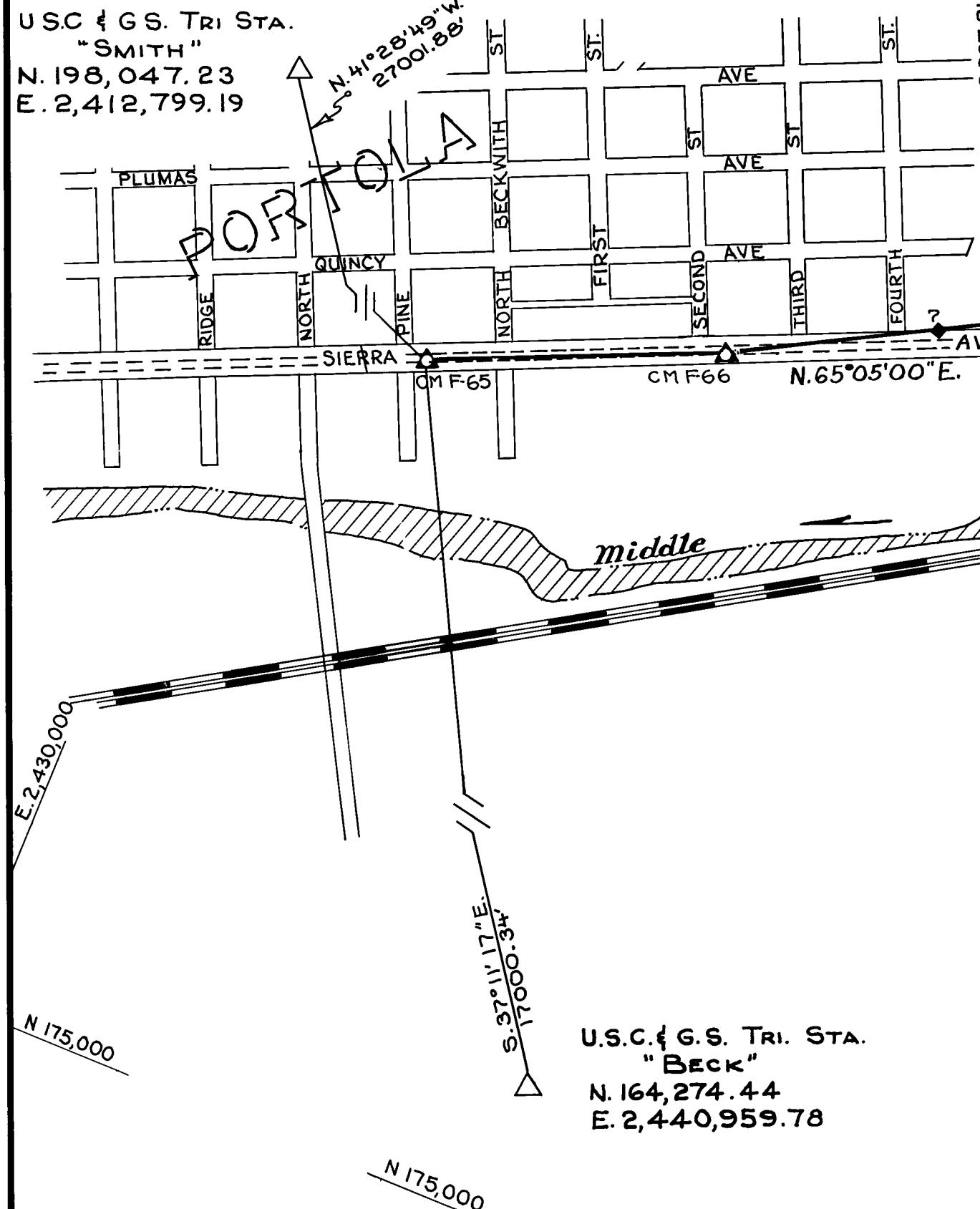
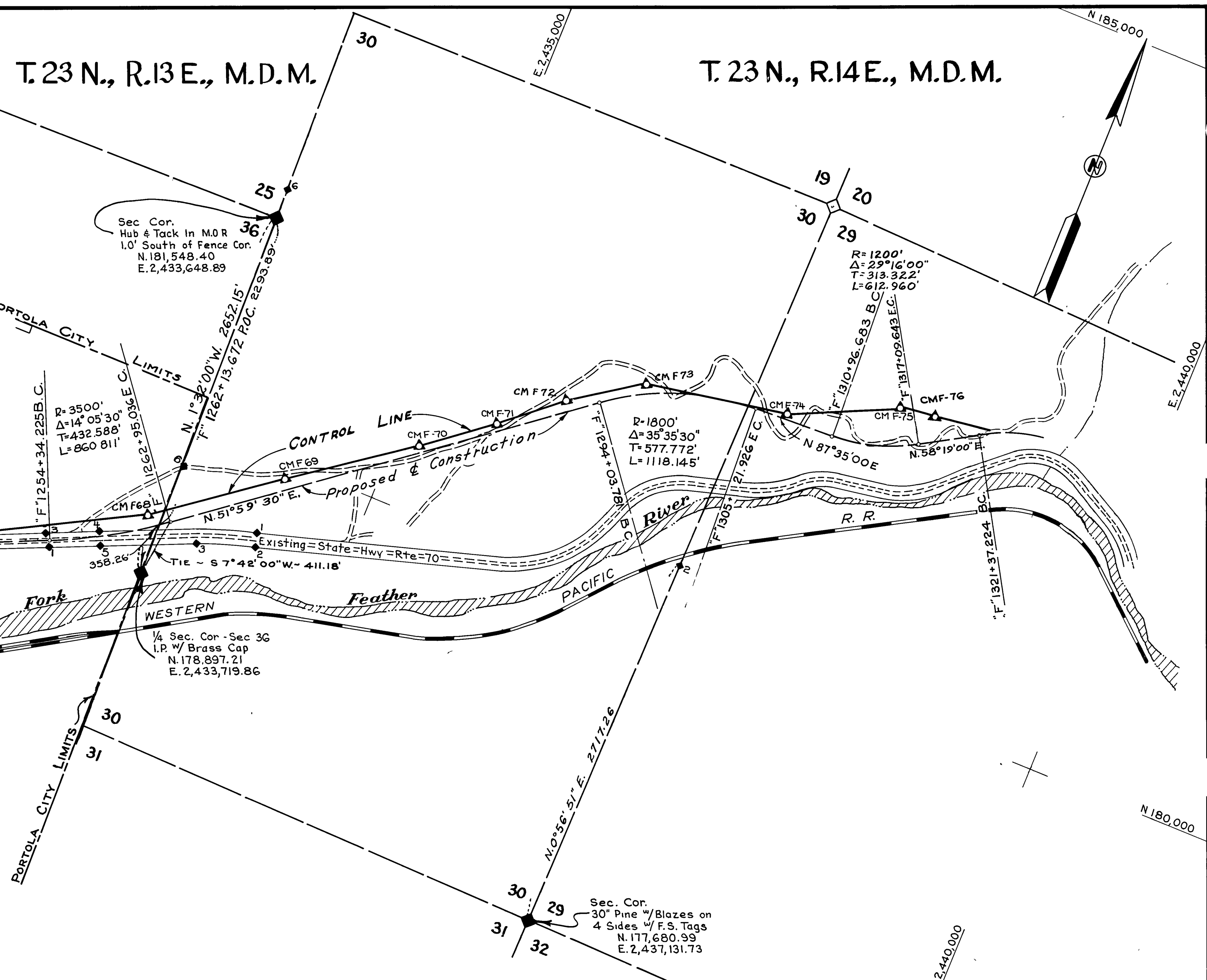


| PT NO | SEC NO | COORDINATES | | DESCRIPTION |
|-------|--------|-------------|---------------|--|
| | | N | E | |
| 1 | 36 | 178,813.589 | 2,433,046.701 | Found 2" I.P. w/ Forest Service Brass Cap Marked A.P.S. E.S. 373 |
| 3 | 36 | 178,895.255 | 2,432,989.090 | 1" I.P. S.W. Cor Lot 48 of Parkside Terrace Subdivision |
| 4 | 36 | 179,046.137 | 2,433,328.480 | Found 6"x6" Conc. R/W Mon. |
| 5 | 36 | 179,954.894 | 2,433,369.306 | " " " " |
| 6 | 36 | 179,692.620 | 2,433,698.483 | Found 1" I.P. @ S.E. Cor Lot #42 |
| 7 | 36 | 178,627.779 | 2,432,385.932 | Found 1/2" I.P. |
| 1 | 30 | 179,468.860 | 2,434,356.308 | Found 6"x6" Conc. R/W Mon. |
| 2 | 30 | 179,372.686 | 2,434,383.582 | " " " " |
| 3 | 30 | 179,231.709 | 2,433,993.327 | " " " " |
| 6 | 30 | 181,755.748 | 2,433,643.282 | Found 1" I.P. L.S. 2843 |
| 2 | 29 | 180,397.877 | 2,437,176.664 | Found 1" I.P. Approx R.R. R/W |
| 36 | 36 | 177,817.860 | 2,430,684.260 | Set T-Bar in Conc. |
| 36 | 36 | 178,243.829 | 2,431,688.701 | " " " " |
| 36 | 36 | 179,290.173 | 2,433,591.329 | " " " " |
| 36 | 36 | 179,887.279 | 2,434,384.237 | " " " " |
| 30 | 30 | 180,462.417 | 2,435,153.779 | " " " " |
| 30 | 30 | 180,807.471 | 2,435,613.642 | " " " " |
| 30 | 30 | 181,144.307 | 2,436,005.263 | " " " " |
| 30 | 30 | 181,470.286 | 2,436,482.088 | " " " " |
| 29 | 29 | 181,653.530 | 2,437,478.304 | " " " " |
| 29 | 29 | 181,979.614 | 2,438,187.536 | " " " " |
| 29 | 29 | 182,028.381 | 2,438,444.175 | " " " " |

USC & G.S. TRI STA.
"SMITH"
N. 198,047.23
E. 2,412,799.19



U.S.C. & G.S. TRI. STA.
"BECK"
N. 164,274.44
E. 2,440,959.78



THIS MAP HAS BEEN EXAMINED FOR CONFORMANCE WITH THE REQUIREMENTS OF THE LAND SURVEYORS' ACT THIS 14th DAY OF APRIL, 1966

James V. Stanger
COUNTY SURVEYOR

THIS MAP CORRECTLY REPRESENTS A SURVEY MADE BY ME OR UNDER MY DIRECTION IN CONFORMANCE WITH THE REQUIREMENTS OF THE LAND SURVEYORS' ACT AT THE REQUEST OF CALIFORNIA DIVISION OF HIGHWAYS IN

W.S. Miles
H S Miles, RCE 5569

- LEGEND
- ◆ FOUND SECTION CORNERS
 - ◇ UNCONFIRMED CORNER
 - ▲ CONTROL MONUMENT ESTABLISHED BY STATE OF CALIFORNIA FOR PURPOSES OF THIS SURVEY. T-BAR W/CAP SET IN CONC. OR BRASS CAP SET IN ROCK.

ALL BEARINGS AND DISTANCES ARE GRID, BASED ON CALIF COORDINATE SYSTEM, ZONE 1, UNLESS OTHERWISE NOTED. MULTIPLY GRID DISTANCES BY 1.0001863 TO OBTAIN GROUND LEVEL DISTANCES

COORDINATES ESTABLISHED FROM U.S.C & G.S. Δ STAS. "SMITH", "BECK" & "HAWLEY" (ZONE 1)

4007

FILED FOR RECORD THIS 14th DAY OF April, 1966 AT 2:55 P.M. IN BOOK 3 OF Pgs. AT PAGE 62, AT THE REQUEST OF Division of State Highways

James V. Stanger
COUNTY RECORDER

No Fee

SURVEY OF A
CONTROL LINE
FOR
STATE HIGHWAY PURPOSES
IN SEC. 36 T. 23 N., R. 13 E., M.D.M.
AND SEC. 29 & 30 T. 23 N., R. 14 E., M.D.M.
PLUMAS COUNTY, CALIFORNIA
SCALE: 1" = 500'