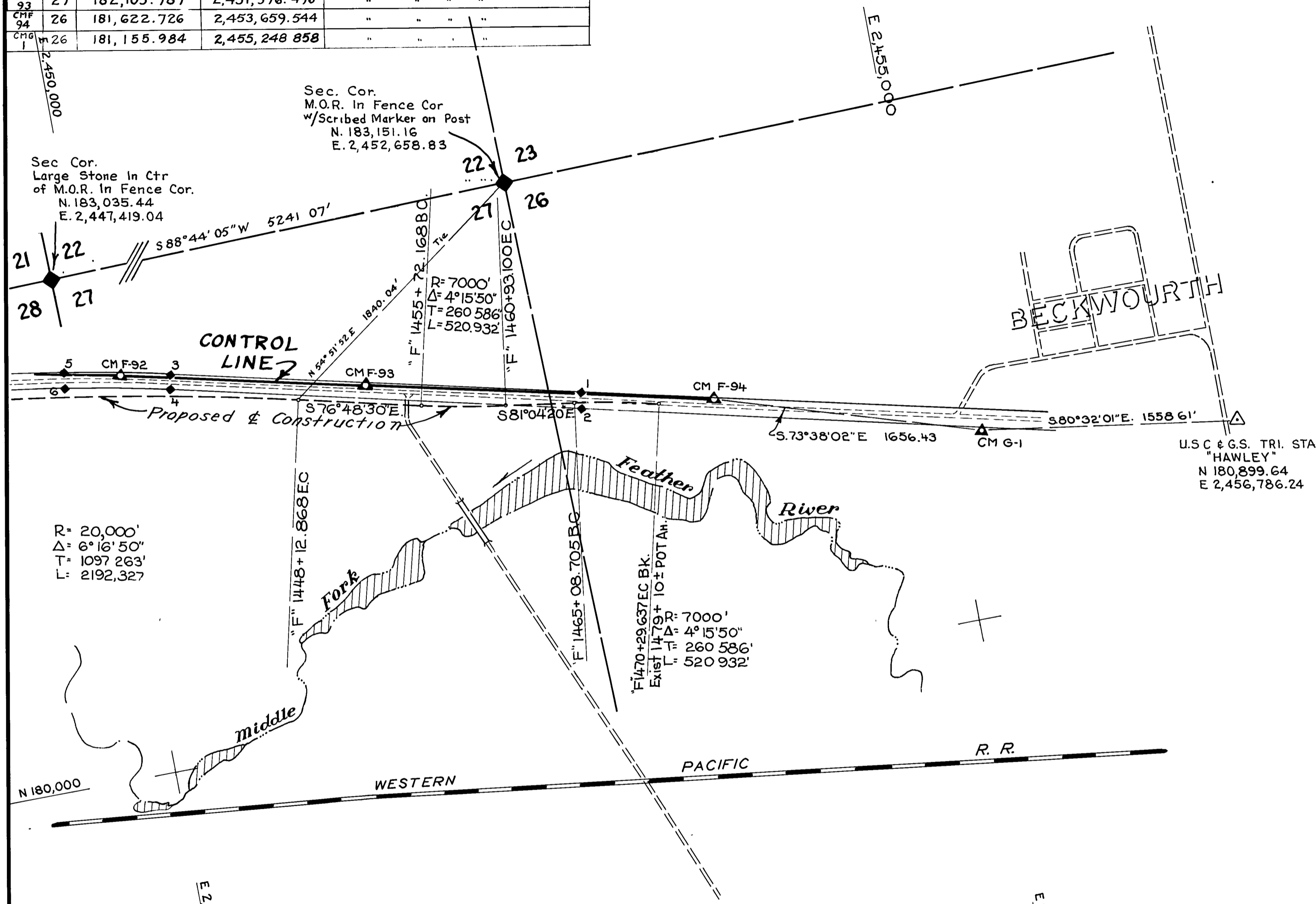
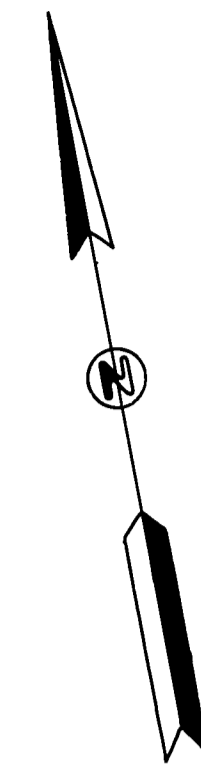


PT NO	SEC NO	COORDINATES		DESCRIPTION
		N	E	
1	26	181,808.299	2,452,889.379	6"x6" Conc. R/W Mon.
2	26	181,711.020	2,452,866.597	" " " "
3	27	182,388.237	2,450,415.673	" " " "
4	27	182,290.835	2,450,392.935	" " " "
5	27	182,514.323	2,449,788.140	" " " "
6	27	182,415.746	2,449,771.570	" " " "
CMF 92	27	182,435.001	2,450,118.249	Set T-Bar in Conc
CMF 93	27	182,105.787	2,451,576.496	" " " "
CMF 94	26	181,622.726	2,453,659.544	" " " "
CMF 94	26	181,155.984	2,455,248.858	" " " "

T.23N.,R.14E.,M.D.M.

E 2,450,000



N 180,000

R= 20,000'
 Δ= 6°16'50"
 T= 1097.263'
 L= 2192.327

R= 7000'
 Δ= 4°15'50"
 T= 260.586'
 L= 520.932'

THIS MAP HAS BEEN EXAMINED FOR CONFORMANCE WITH THE REQUIREMENTS OF THE LAND SURVEYORS' ACT THIS 14TH DAY OF APRIL, 1966

James V. Flanagan
 COUNTY SURVEYOR

THIS MAP CORRECTLY REPRESENTS A SURVEY MADE BY ME OR UNDER MY DIRECTION IN CONFORMANCE WITH THE REQUIREMENTS OF THE LAND SURVEYORS' ACT AT THE REQUEST OF CALIFORNIA DIVISION OF HIGHWAYS IN

H S Miles
 H S MILES, RCE 5569

LEGEND

- ◆ FOUND SECTION CORNERS
- ◻ UNCONFIRMED CORNER
- ▲ CONTROL MONUMENT ESTABLISHED BY STATE OF CALIFORNIA FOR PURPOSES OF THIS SURVEY T-BAR w/CAP SET IN CONC OR BRASS CAP SET IN ROCK

ALL BEARINGS AND DISTANCES ARE GRID, BASED ON CALIF COORDINATE SYSTEM, ZONE 1, UNLESS OTHERWISE NOTED. MULTIPLY GRID DISTANCES BY 1.0001863 TO OBTAIN GROUND LEVEL DISTANCES.

COORDINATES ESTABLISHED FROM U.S.C. & G.S. Δ STAS. "SMITH", "BECK" & "HAWLEY" (ZONE 1)

4009

FILED FOR RECORD THIS 14th DAY OF April, 1966 AT 2:16 P.M. IN BOOK 3 OF PGs. AT PAGE 63, AT THE REQUEST OF *Division of State Highways*
Ed Logan
 COUNTY RECORDER

No Fee

SURVEY OF A
CONTROL LINE
 FOR
STATE HIGHWAY PURPOSES
 IN SEC. 26 & 27 T.23N.,R.14E.,M.D.M.
 PLUMAS COUNTY, CALIFORNIA
 SCALE: 1" = 500'