

SURVEYOR'S CERTIFICATE

THIS MAP CORRECTLY REPRESENTS A SURVEY MADE BY ME OR UNDER MY DIRECTION IN CONFORMANCE WITH THE REQUIREMENTS OF THE LAND SURVEYORS' ACT AT THE REQUEST OF R H PAPENHAUSEN AND L H BRAND IN AUGUST, 1966 THIS RECORD OF SURVEY IS NOT A SUBDIVISION AS DEFINED IN SECTION 11535, ARTICLE 3, CHAPTER 2, OF THE BUSINESS AND PROFESSIONS CODE.

Edward P Norris
EDWARD P NORRIS LS 2846

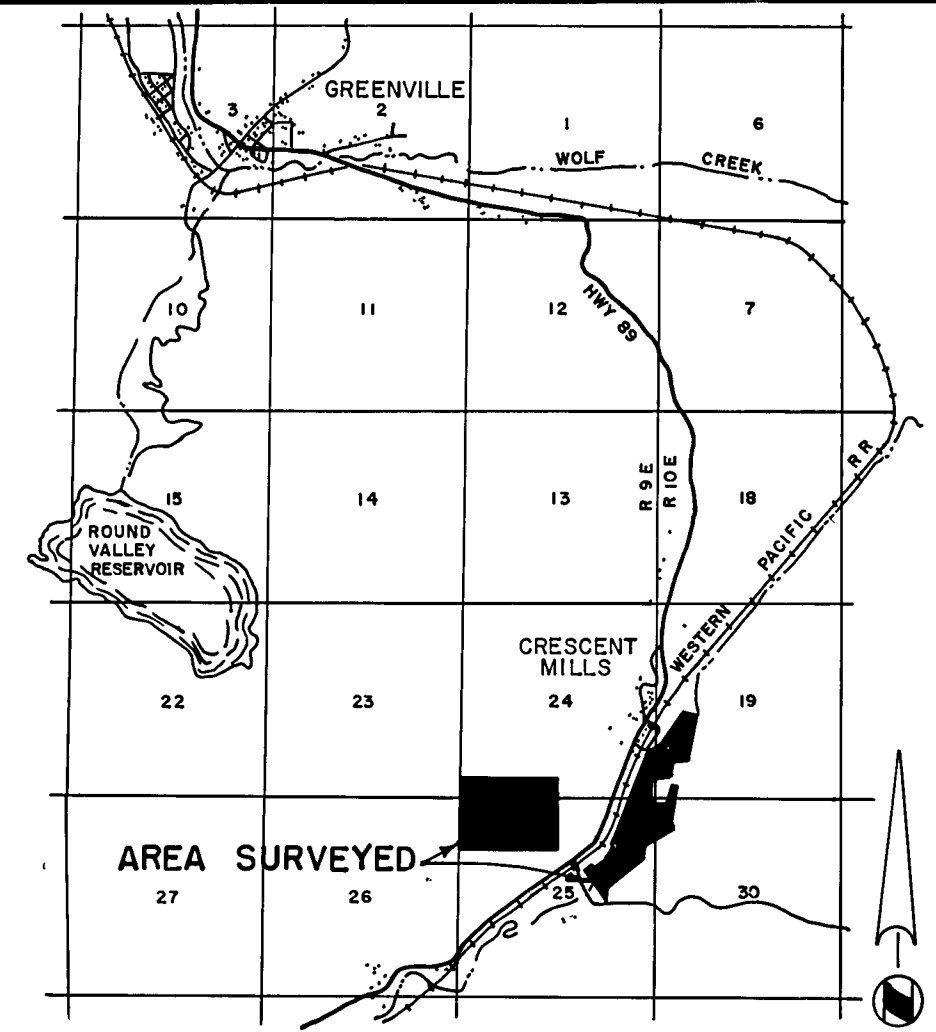
NOTES

THE BASIS OF BEARING IS THE SOUTH LINE OF THE SOUTHWEST 1/4 OF SECTION 24, T26N, R9E, MDB&M, GIVEN AS S88°06'35"W ON THAT CERTAIN RECORD OF SURVEY MAP FILED SEPTEMBER 29, 1964, IN BOOK 2 OF RECORD OF SURVEYS AT PAGE 131 IN THE OFFICE OF THE RECORDER, PLUMAS COUNTY, CALIFORNIA RECORDING NO 2065

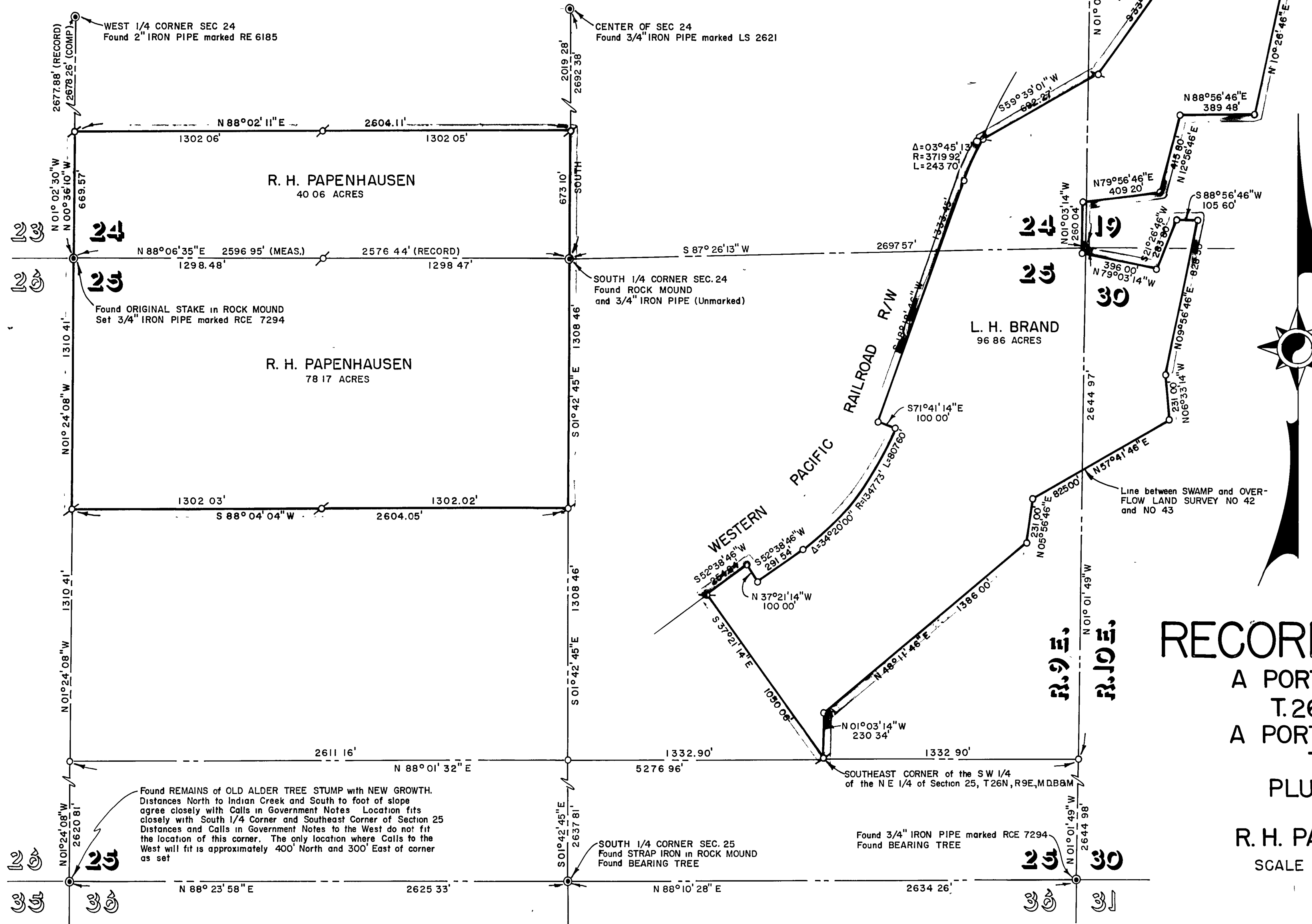
LEGEND

SET 3/4" IRON PIPE MARKED RCE 7294
COMPUTED CORNER LOCATION

Location of EAST 1/4 CORNER OF SEC 24 as taken from State of Calif Division of Highways (Not Set)



LOCATION MAP



COUNTY ENGINEER'S CERTIFICATE

THIS MAP HAS BEEN EXAMINED FOR CONFORMANCE WITH THE REQUIREMENTS OF THE LAND SURVEYORS' ACT THIS 12TH DAY OF SEPTEMBER, 1966

Lawrence J. Brock
LAWRENCE J BROCK RCE 13528

RECORDER'S CERTIFICATE

FILED FOR RECORD THIS 12TH DAY OF Sept, 1966, AT 2:15 P M IN BOOK 7 OF RECORD OF SURVEYS AT PAGE 75 AT THE REQUEST OF WALTER B GRIMES. RECORDING NO 1473

FEE 500
Walter B Grimes
COUNTY RECORDER

RECORD OF SURVEY MAP

A PORTION OF SECTIONS 24 & 25,
T.26 N., R.9E., M.D.B.&M., AND
A PORTION OF SECTIONS 19 & 30,
T.26 N., R.10E., M.D.B.&M.
PLUMAS COUNTY, CALIFORNIA

SURVEY OF THE LANDS OF
R. H. PAPENHAUSEN & L. H. BRAND
SCALE 1"=400' AUGUST, 1966

WALTER B GRIMES & ASSOCIATES
CIVIL ENGINEERS & LAND SURVEYORS
1338 MANGROVE AVENUE, CHICO, CALIFORNIA