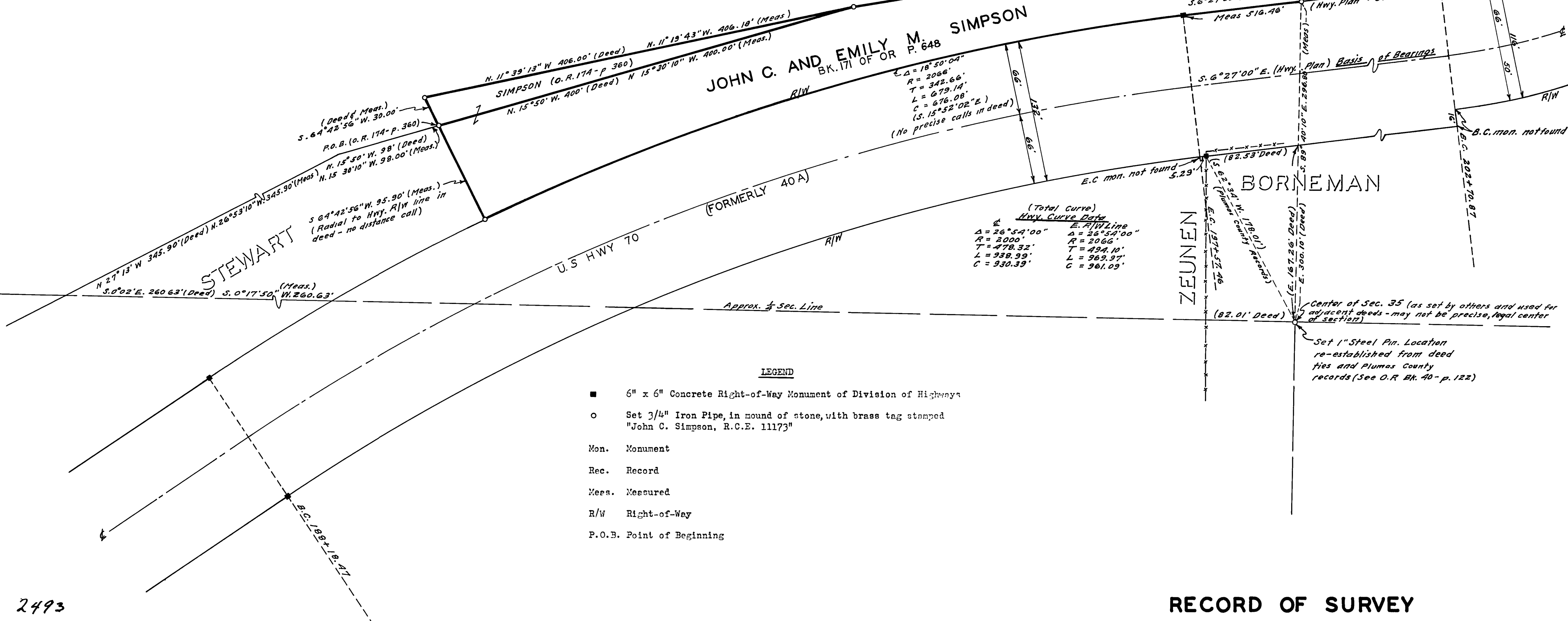


MEADOW VALLEY LUMBER CO



LEGEND

- 6" x 6" Concrete Right-of-Way Monument of Division of Highways
- Set 3/4" Iron Pipe, in mound of stone, with brass tag stamped "John C. Simpson, R.C.E. 11173"
- Mon. Monument
- Rec. Record
- Meas. Measured
- R/W Right-of-Way
- P.O.B. Point of Beginning

2493

RECORDER'S CERTIFICATE

Filed for record this 8th day of December, 1966, at 8:50 A.M. in Book 3 of Records of Survey at Page 80 at the request of John C. Simpson.

Ida Hogan Gronvold
Ida Hogan Gronvold
Plumas County Recorder

COUNTY SURVEYOR'S CERTIFICATE

This map has been examined for conformance with the requirements of the Land Surveyor's Act this 8th day of December, 1966.

Lawrence J. Brock
Lawrence J. Brock, R.C.E. No. 13528
Plumas County Surveyor

SURVEYOR'S CERTIFICATE

This map correctly represents a survey made by me or under my direction in conformance with the requirements of the Land Surveyor's Act at the request of John C. Simpson.

This Record of Survey does not constitute a subdivision under Chapter 2, Article 3, Section 11535 of the Business and Professions Code.

John C. Simpson
John C. Simpson, R.C.E. No. 11173



RECORD OF SURVEY

LANDS OF JOHN C. AND EMILY M. SIMPSON

WITHIN S.W. 1/4, NE. 1/4, SEC 35, T. 25N., R. 9E. (M.D.M.)
PLUMAS COUNTY, CALIFORNIA

JOHN C SIMPSON P.E.
CIVIL ENGINEER
QUINCY, CALIFORNIA

Fee \$5.00
File No. _____