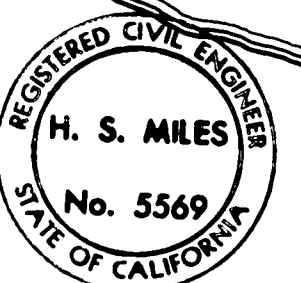
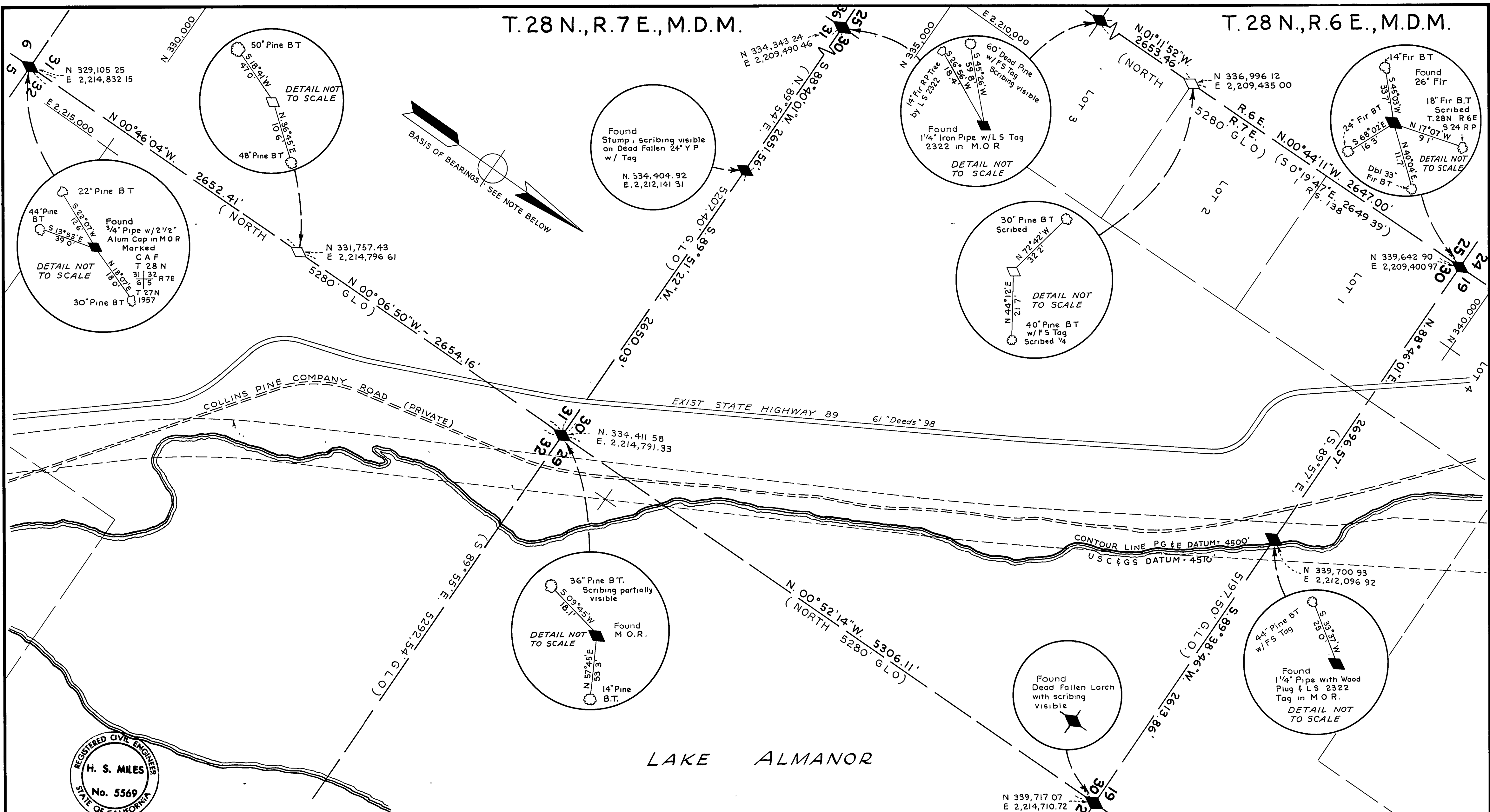


T. 28 N., R. 7 E., M.D.M.

T. 28 N., R. 6 E., M.D.M.



THIS MAP CORRECTLY REPRESENTS A SURVEY MADE BY ME OR UNDER MY DIRECTION IN CONFORMANCE WITH THE REQUIREMENTS OF THE LAND SURVEYOR'S ACT, AT THE REQUEST OF CALIFORNIA DIVISION OF HIGHWAYS IN 1958, 1960, & 1963

H S Miles
H S MILES, R E 5569

THIS MAP HAS BEEN EXAMINED FOR CONFORMANCE WITH THE REQUIREMENTS OF THE LAND SURVEYOR'S ACT THIS 17TH DAY OF May 19 67
Laurence Brock
COUNTY SURVEYOR

FILED FOR RECORD THIS _____ DAY OF _____, _____ AT _____ IN BOOK _____ OF _____ AT PAGE _____, AT THE REQUEST OF _____

COUNTY RECORDER

LEGEND
◆ FOUND MONUMENT AS INDICATED
◇ UNCONFIRMED CORNERS

NOTE:
DISTANCES AND BEARINGS ARE BASED ON CALIFORNIA COORDINATE SYSTEM, ZONE 1. DISTANCES SHOWN ARE GRID DISTANCES MULTIPLY BY 1.0002675 TO OBTAIN GROUND LEVEL DISTANCES BEARINGS SHOWN ARE ESTABLISHED FROM U.S.C. & G.S. 4 STATIONS
▲ ALMANOR TRI. STA & ▲ CHESTER AIRPORT TRI STA
N 314,252.510 N 348,414.470
E 2,258,790.610 E 2,212,062.330
(EXCEPTION-DISTANCES & BEARINGS SHOWN IN PARENTHESES ARE FROM RECORD AS INDICATED)

RECORD OF SURVEY FOR STATE HIGHWAY PURPOSES (SHOWING EXISTING MONUMENTS AS FOUND)
IN SEC. 3, 4, 5, 6, 8, 9 & 10 T. 27 N., R. 7 E., M.D.M. AND 13, 14, 23, 24, 25 & 36 T. 28 N., R. 6 E., M.D.M. AND 18, 19, 20, 29, 30, 31, 32 & 33 T. 28 N., R. 7 E., M.D.M.
PLUMAS COUNTY, CALIFORNIA
SCALE: 1" = 500' SHEET 2 OF 3