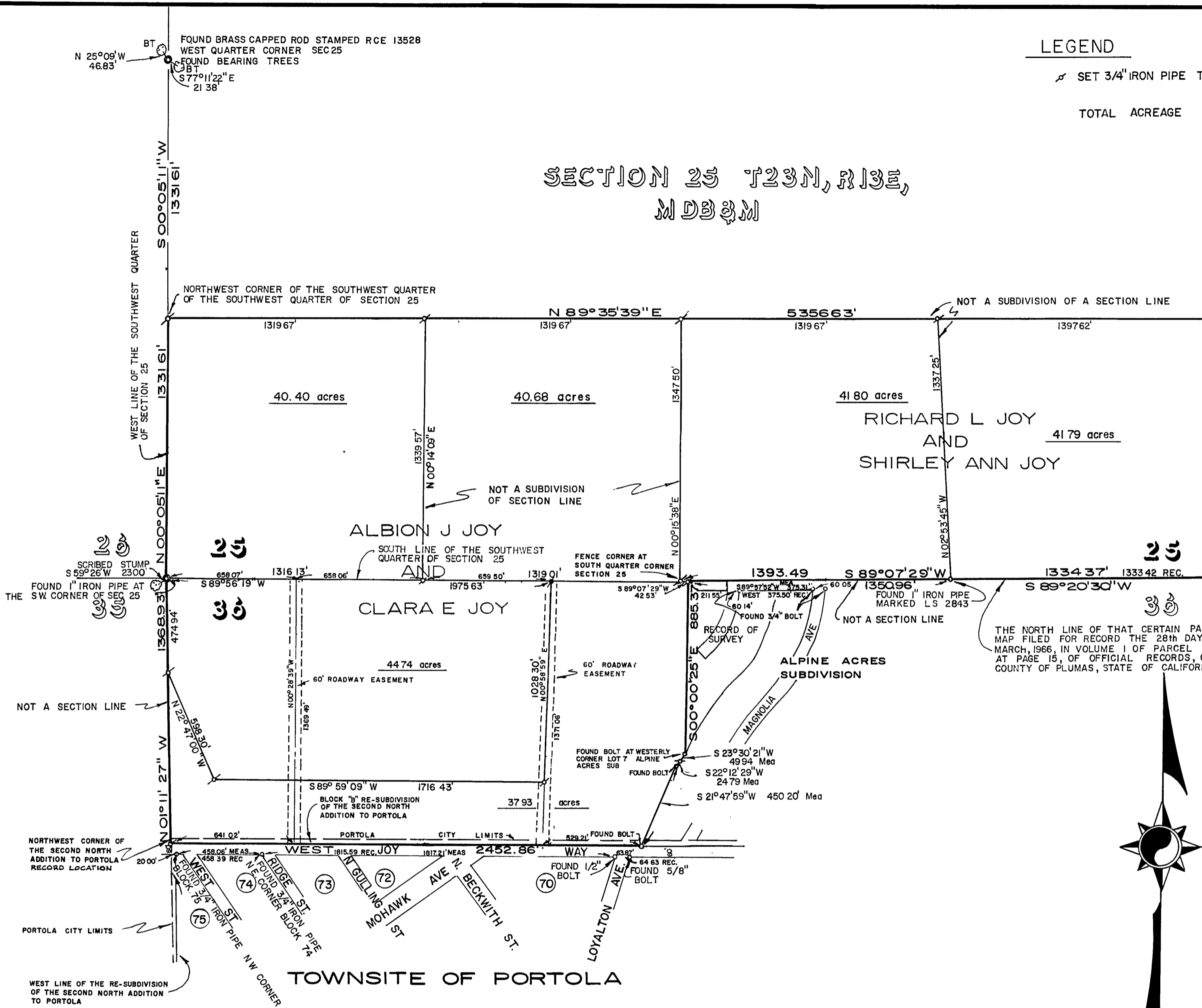
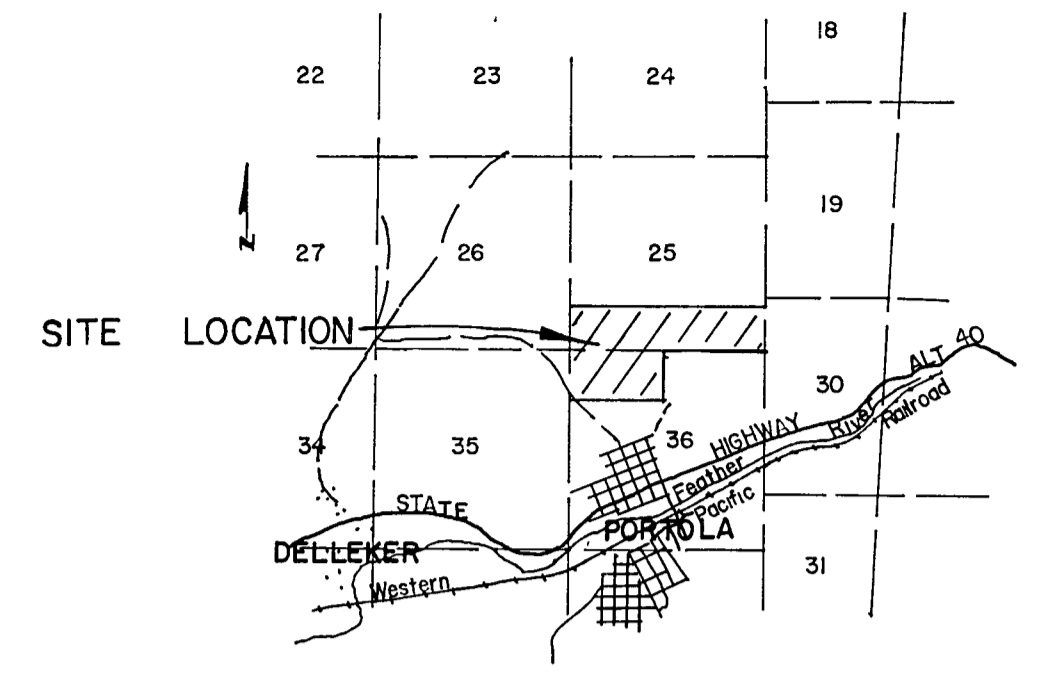


SECTION 25 T23N, R13E, MD&M



LEGEND

— SET 3/4" IRON PIPE TAGGED RCE 7294
 TOTAL ACREAGE ——— 247.34



LOCATION MAP
SCALE 1"=5280'

SURVEYOR'S CERTIFICATE

THIS MAP CORRECTLY REPRESENTS A SURVEY MADE BY ME OR UNDER MY DIRECTION IN CONFORMANCE WITH THE REQUIREMENTS OF THE LAND SURVEYOR'S ACT AT THE REQUEST OF C. ROY CARMICHAEL IN DECEMBER, 1966. THIS RECORD OF SURVEY IS EXCLUDED FROM THE SUBDIVISION MAP ACT BY SECTION 11535, ARTICLE 3, CHAPTER 2, OF THE BUSINESS AND PROFESSIONAL CODE

Edward P. Norris
 EDWARD P. NORRIS L.S. 2846

COUNTY ENGINEER'S CERTIFICATE

THIS MAP HAS BEEN EXAMINED FOR CONFORMANCE WITH THE REQUIREMENTS OF THE LAND SURVEYOR'S ACT THIS 31st DAY OF May, 1967

Lawrence J. Brock
 LAWRENCE J. BROCK R.C.E. 13528

RECORD OF SURVEY MAP

A PORTION OF THE SOUTH HALF OF SECTION 25 AND A PORTION OF THE NORTH HALF OF SECTION 36, T. 23N., R. 13E., MD&M PLUMAS COUNTY CALIFORNIA

SURVEY OF A PORTION OF THE LANDS OF
 C. ROY CARMICHAEL & ALBION J. JOY

SCALE 1"= 400'

JANUARY 1967

WALTER B GRIMES & ASSOCIATES
 CIVIL ENGINEERS & LAND SURVEYORS
 1338 MANGROVE AVENUE, CHICO, CALIFORNIA.

NOTES

THE BASIS OF BEARING IS THE SOUTH LINE OF JOY WAY SHOWN AS EAST ON THAT CERTAIN AMENDED RE-SUBDIVISION MAP OF A PORTION OF THE SECOND NORTH ADDITION TO PORTOLA TOWNSITE, FILED FOR RECORD THE 22nd DAY OF MARCH, 1962, IN BOOK 2 OF MAPS, AT PAGE 43, OF OFFICIAL RECORDS OF THE COUNTY OF PLUMAS, STATE OF CALIFORNIA.

AN INDETERMINATE PORTION OF THE NORTHWEST 1/4 OF SECTION 36, HAS BEEN OPTIONED TO PLUMAS COUNTY FOR ROADWAY PURPOSES.

RECORDER'S CERTIFICATE

FILED FOR RECORD THIS 31st DAY OF MAY, 1967
 AT 3:30 P.M. IN BOOK 3 OF RECORD OF SURVEYS AT PAGE 3890
 AT THE REQUEST OF WALTER B. GRIMES RECORDING NO. 3890

FEE 15.00

Walter B. Grimes
 COUNTY RECORDER

BY _____ DEPUTY