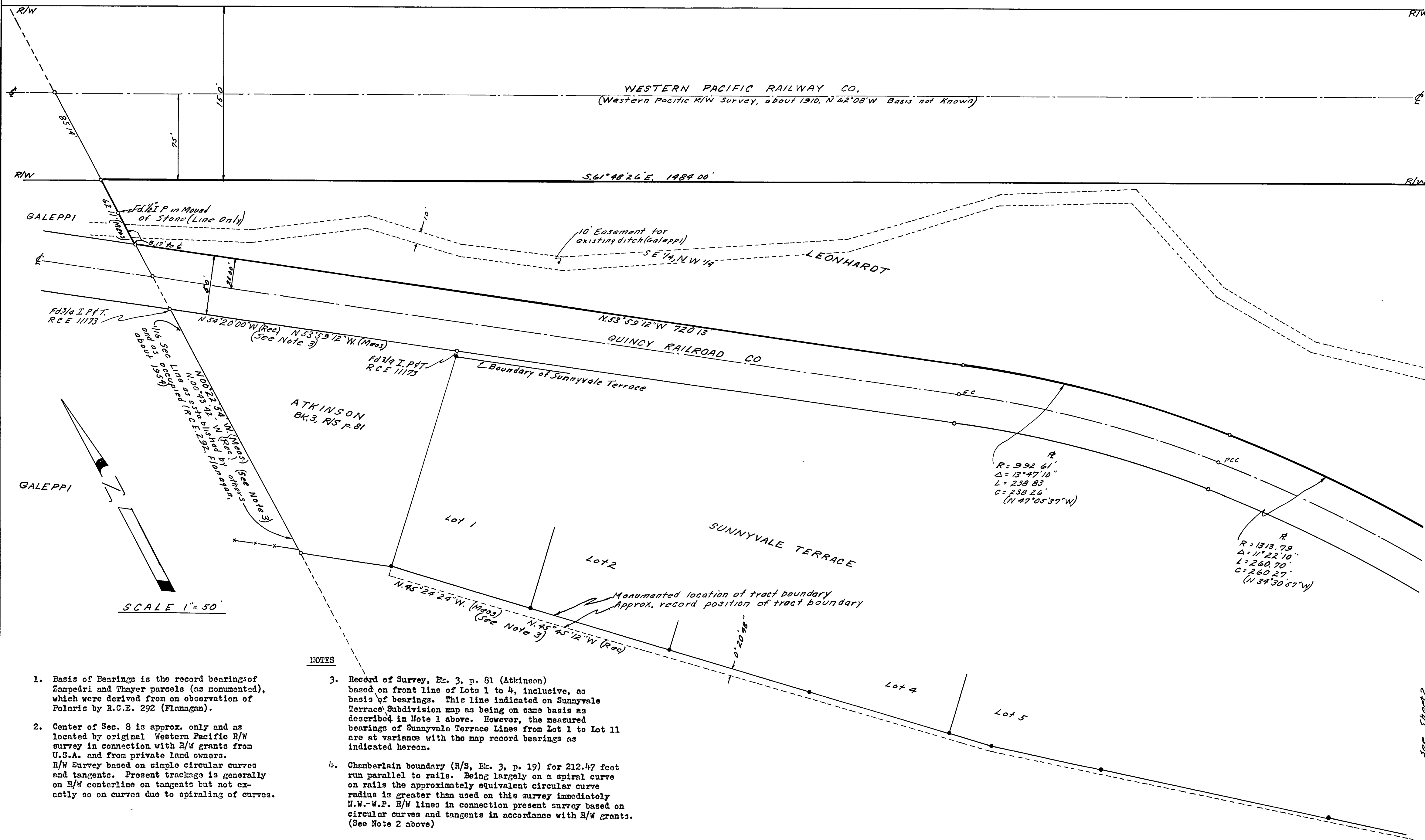


WESTERN PACIFIC RAILWAY CO.
 (Western Pacific R/W Survey, about 1910, N 62°08'W Basis not known)

S.61°48'26"E, 1989.00'



NOTES

1. Basis of Bearings is the record bearings of Zampedri and Thayer parcels (as monumented), which were derived from an observation of Polaris by R.C.E. 292 (Flanagan).
2. Center of Sec. 8 is approx. only and as located by original Western Pacific R/W survey in connection with R/W grants from U.S.A. and from private land owners. R/W Survey based on simple circular curves and tangents. Present trackage is generally on R/W centerline on tangents but not exactly so on curves due to spiraling of curves.
3. Record of Survey, Bk. 3, p. 81 (Atkinson) based on front line of Lots 1 to 4, inclusive, as basis of bearings. This line indicated on Sunnyvale Terrace Subdivision map as being on same basis as described in Note 1 above. However, the measured bearings of Sunnyvale Terrace Lines from Lot 1 to Lot 11 are at variance with the map record bearings as indicated hereon.
4. Chamberlain boundary (R/S, Bk. 3, p. 19) for 212.47 feet run parallel to rails. Being largely on a spiral curve on rails the approximately equivalent circular curve radius is greater than used on this survey immediately N.W.-W.P. R/W lines in connection present survey based on circular curves and tangents in accordance with R/W grants. (See Note 2 above)

RECORD OF SURVEY
 OF
CERTAIN LANDS OF ERNEST G. LEONHARDT
 IN SECTION 8, T.24 N., R.10E (MDM)
 PLUMAS COUNTY-CALIFORNIA

JOHN C SIMPSON P.E.
 CIVIL ENGINEER
 QUINCY CALIFORNIA