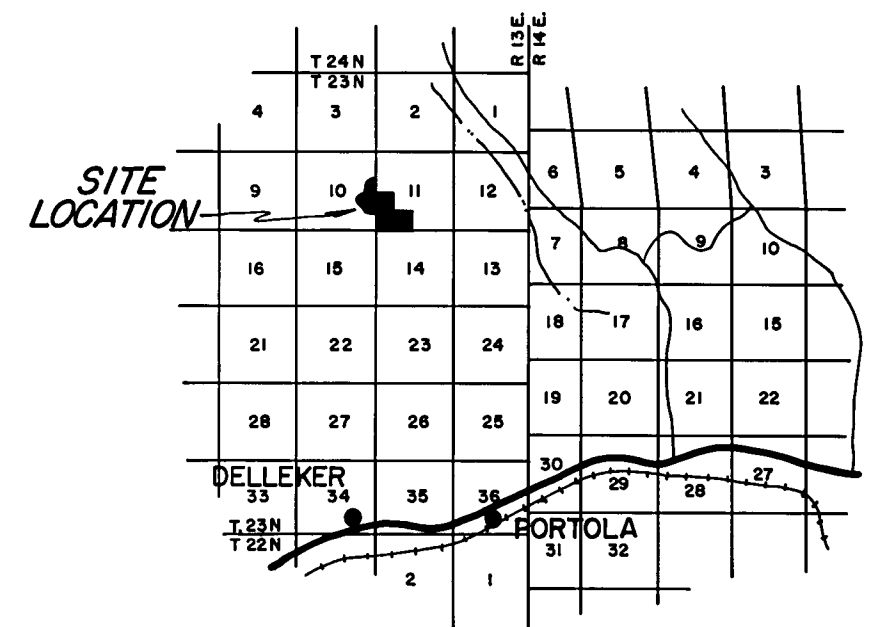
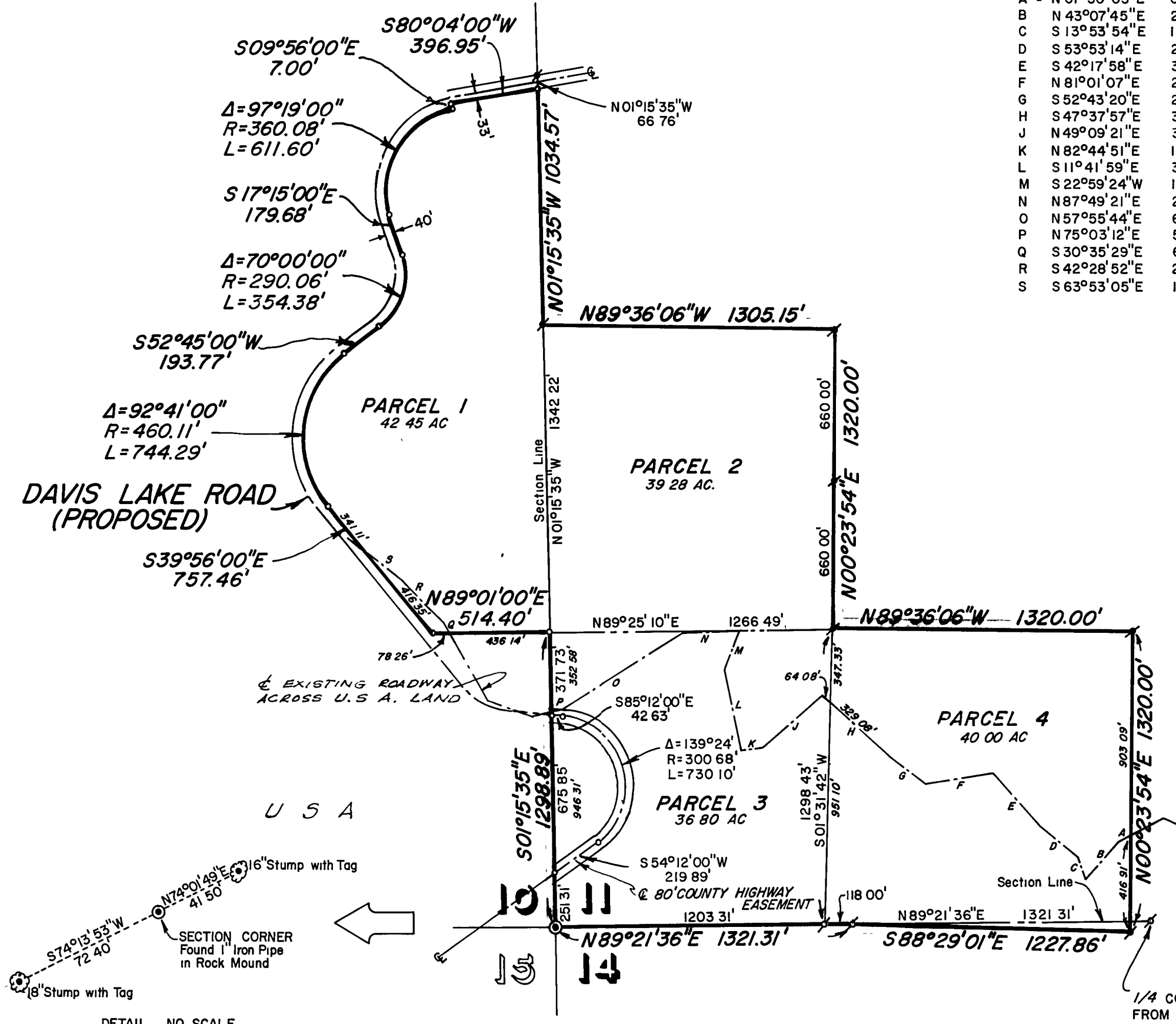


EXISTING 60' ROADWAY EASEMENT

A	N 61°30'05"E	68.88'
B	N 43°07'45"E	230.41'
C	S 13°53'54"E	116.24'
D	S 53°53'14"E	206.15'
E	S 42°17'58"E	314.44'
F	N 81°01'07"E	296.81'
G	S 52°43'20"E	204.25'
H	S 47°37'57"E	393.16'
J	N 49°09'21"E	340.84'
K	N 82°44'51"E	101.91'
L	S 11°41'59"E	371.89'
M	S 22°59'24"W	179.86'
N	N 87°49'21"E	255.84'
O	N 57°55'44"E	623.75'
P	N 75°03'12"E	55.63'
Q	S 30°35'29"E	68.97'
R	S 42°28'52"E	261.73'
S	S 63°53'05"E	148.84'

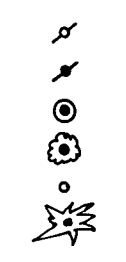


LOCATION MAP
SCALE: 1" = 1-1/2 Miles



LEGEND

- SET 3/4" IRON PIPE MARKED RCE 7294
- FOUND 3/4" IRON PIPE MARKED RCE 7294
- FOUND SECTION CORNER
- FOUND BEARING TREE
- COMPUTED CORNER LOCATION
- BLAZED TREE AS INDICATED



SURVEYOR'S CERTIFICATE

THIS MAP CORRECTLY REPRESENTS A SURVEY MADE BY ME OR UNDER MY DIRECTION IN CONFORMANCE WITH THE REQUIREMENTS OF THE LAND SURVEYOR'S ACT AT THE REQUEST OF BIDWELL LAND AND DEVELOPMENT COMPANY IN NOVEMBER, 1967 THIS RECORD OF SURVEY IS EXCLUDED FROM THE SUBDIVISION MAP ACT BY SECTION 11535, ARTICLE 3, CHAPTER 2, OF THE BUSINESS AND PROFESSIONAL CODE.

Edward P. Norris
EDWARD P. NORRIS, L.S. 2846

RECORDER'S CERTIFICATE

FILED FOR RECORD THIS 30th DAY OF November, 1967, AT 4:41 PM IN BOOK 3 OF RECORD OF SURVEYS AT PAGE 105 AT THE REQUEST OF WALTER B. GRIMES. RECORDING NO. 2456

FEE 5.00
BY *John Hagan* COUNTY RECORDER
BY *Debra* DEPUTY

COUNTY ENGINEER'S CERTIFICATE

THIS MAP HAS BEEN EXAMINED FOR CONFORMANCE WITH THE REQUIREMENTS OF THE LAND SURVEYOR'S ACT THIS 29th DAY OF November 1967.

Lawrence J. Brock
LAWRENCE J. BROCK, R.C.E. 13528

NOTES

THE BASIS OF BEARING IS THE WEST LINE OF SECTION 11, T.23N., R.13E., M.D.B.&M, GIVEN AS S01°15'35"E ON THAT CERTAIN RECORD OF SURVEY MAP FILED NOVEMBER 1, 1967, IN BOOK 3 OF RECORD OF SURVEYS AT PAGE 101, RECORDING NO. 2131, IN THE PLUMAS COUNTY OFFICIAL RECORDS.

TOTAL ACREAGE 158.53 AC.

RECORD OF SURVEY MAP

A PORTION OF SECTION 10, 11, & 14,
T.23N., R.13E., M.D.B.&M.
PLUMAS COUNTY, CALIFORNIA

SURVEY OF THE LANDS OF
BIDWELL LAND & DEVELOPMENT CO.

SCALE: 1" = 500' NOVEMBER, 1967

G WALTER B. **A**SSOC.
RIMES
CIVIL ENGINEERS & LAND SURVEYORS
1356 MANGROVE AVENUE, CHICO, CALIFORNIA