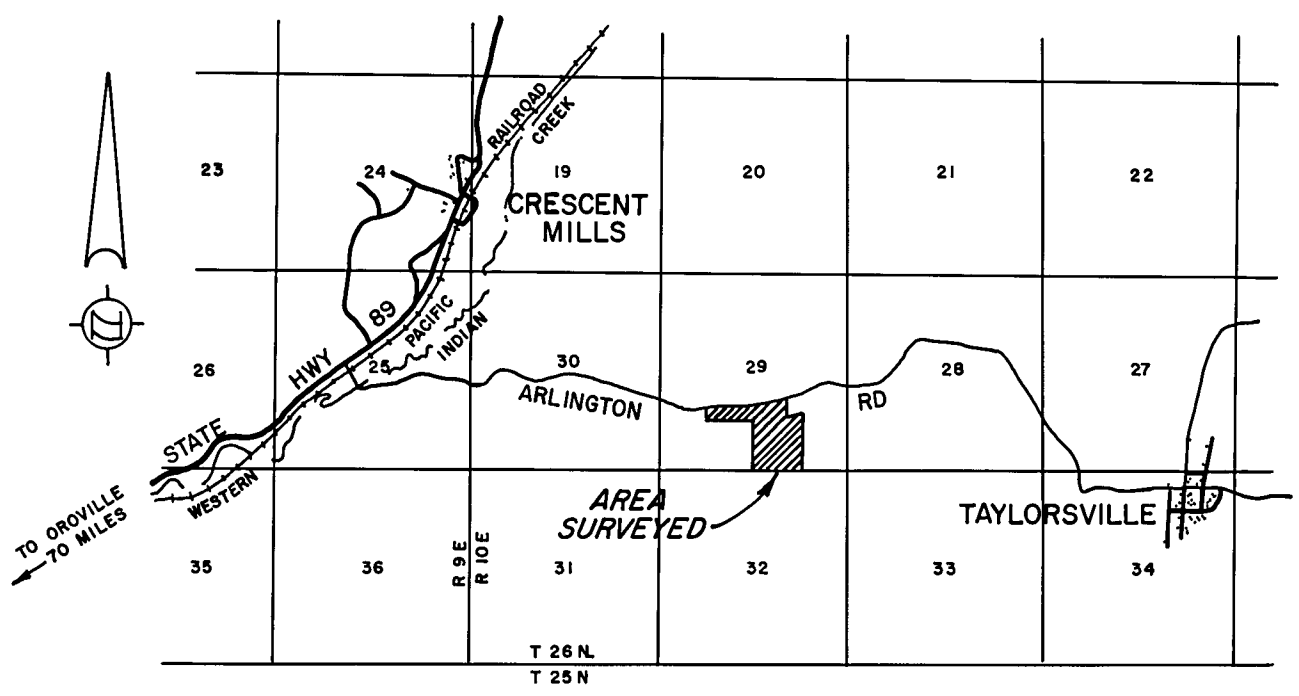
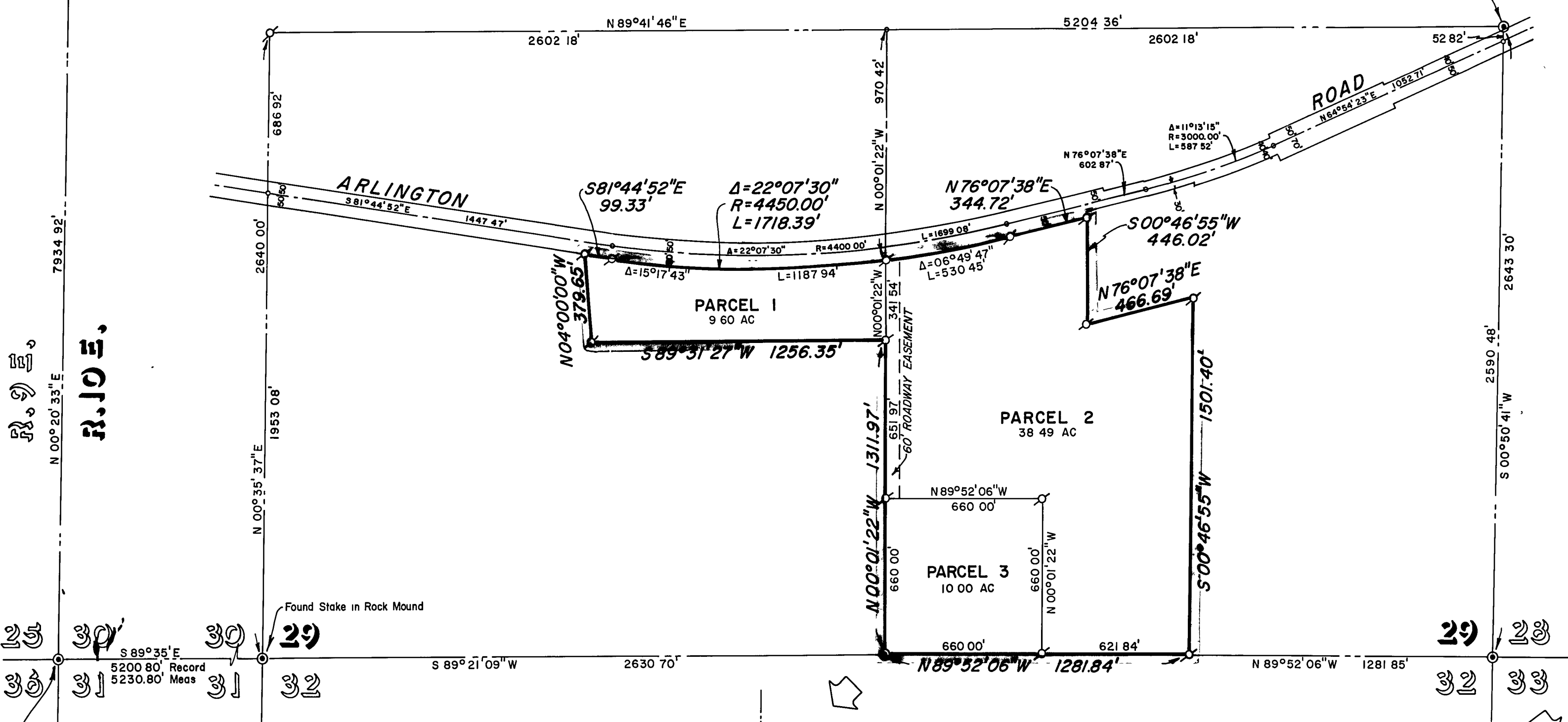
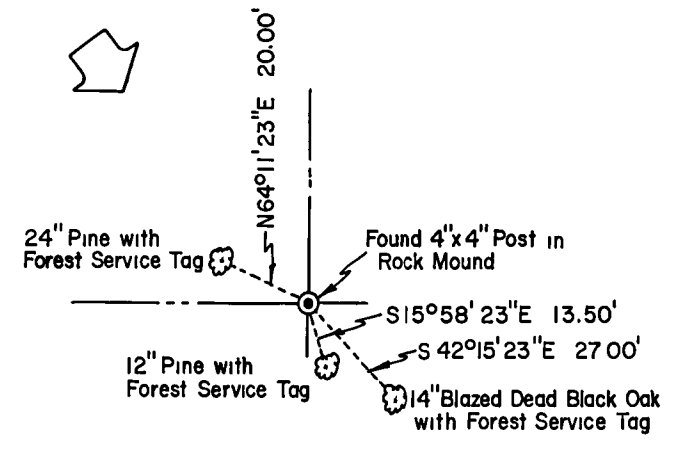
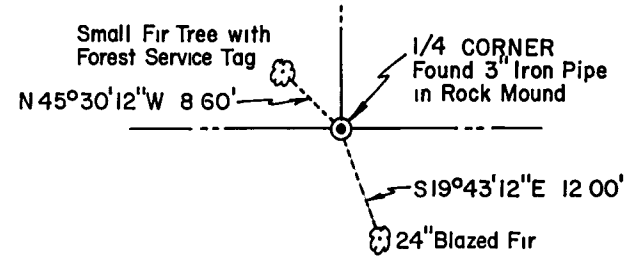


Location of EAST 1/4 CORNER of SECTION 24, T 26 N., R 9 E., M.D.B. & M., as shown on that certain Record of Survey map filed September 12, 1966, in Book 3 of Record of Surveys at page 75 in the Office of the Recorder, Plumas County, State of California Recording No 1473



SCALE: 1" = 1 Mile  
LOCATION MAP

Location of SECTION CORNER as shown on that certain Record of Survey map filed September 12, 1966, in Book 3 of Record of Surveys at page 75 in the Office of the Recorder, Plumas County, State of California Recording No 1473



**NOTES**

THE BASIS OF BEARING IS THE SOUTH LINE OF SECTION 30, T.26 N., R.10E., M.D.B. & M., GIVEN AS S 89°35'E IN THE G.L.O. NOTES.  
TOTAL ACREAGE 58.09 AC.

**LEGEND**

FOUND AS INDICATED  
SET 3/4" IRON PIPE MARKED R.C.E. 7294  
COMPUTED CORNER LOCATED

**SURVEYOR'S CERTIFICATE**

THIS MAP CORRECTLY REPRESENTS A SURVEY MADE BY ME OR UNDER MY DIRECTION IN CONFORMANCE WITH THE REQUIREMENTS OF THE LAND SURVEYOR'S ACT AT THE REQUEST OF VINCENT & TANINA MERCURIO IN SEPTEMBER, 1967. THIS RECORD OF SURVEY IS EXCLUDED FROM THE SUBDIVISION MAP ACT BY SECTION 11535, ARTICLE 3, CHAPTER 2, OF THE BUSINESS AND PROFESSIONAL CODE.

*Edward P. Norris*  
EDWARD P. NORRIS, L.S. 2846

**COUNTY ENGINEER'S CERTIFICATE**

THIS MAP HAS BEEN EXAMINED FOR CONFORMANCE WITH THE REQUIREMENTS OF THE LAND SURVEYOR'S ACT THIS 30<sup>TH</sup> DAY OF NOVEMBER, 1967.

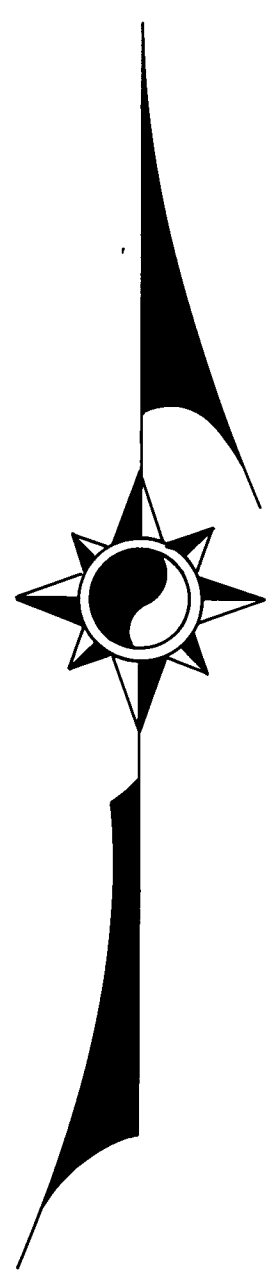
*Lawrence J. Brock*  
LAWRENCE J. BROCK, R.C.E. 13528

**RECORDER'S CERTIFICATE**

FILED FOR RECORD THIS 4<sup>TH</sup> DAY OF December, 1967, AT 4:25 P.M. IN BOOK 3 OF RECORD OF SURVEYS AT PAGE 106 AT THE REQUEST OF WALTER B. GRIMES. RECORDING NO. 2487.

FEE 5<sup>00</sup>  
*Walter B. Grimes*  
COUNTY RECORDER

BY \_\_\_\_\_  
DEPUTY



**RECORD OF SURVEY MAP**

A PORTION OF THE SOUTH HALF OF SECTION 29, T.26 N., R.10E., M.D.B. & M. PLUMAS COUNTY, CALIFORNIA

SURVEY OF THE LANDS OF VINCENT & TANINA MERCURIO  
SCALE: 1" = 400' SEPTEMBER, 1967

**G** WALTER B. **A**  
RIMES ASSOC.  
CIVIL ENGINEERS & LAND SURVEYORS  
1356 MANGROVE AVENUE, CHICO, CALIFORNIA