

# NOTES

BASIS OF BEARING - MONUMENTS FOUND ON LOYALTON AVE.  
AS CALLED N 21°49'20"E - AMENDED RE-SUBDIVISION MAP  
OF A PORTION OF THE 2<sup>ND</sup> NORTH ADDITION TO PORTOLA  
TOWNSITE. BOOK 2 PAGE 43 OF MAPS.

# LEGEND

FND EXIST MONUMENT  
SET 1/2" IP TAGGED LS 3297

# SURVEYOR'S CERTIFICATE

THIS MAP CORRECTLY REPRESENTS A SURVEY MADE  
BY ME OR UNDER MY DIRECTION IN CONFORMANCE  
WITH THE REQUIREMENTS OF THE LAND SURVEYOR'S  
ACT AT THE REQUEST OF N.E. BROSS IN APRIL  
1968.

Gerald C. Henderson  
GERALD C. HENDERSON L.S. 3297

# COUNTY SURVEYOR'S CERTIFICATE

THIS MAP HAS BEEN EXAMINED FOR CONFORMANCE WITH THE REQUIREMENTS  
OF THE LAND SURVEYOR'S ACT THIS 21<sup>ST</sup> DAY OF MAY 1968

Darrell P. Payne #8596  
Asst. COUNTY SURVEYOR

# RECORDER'S CERTIFICATE

FILED THIS 21<sup>ST</sup> DAY OF MAY, 1968, AT 12:01 P.M. IN  
BOOK 3 AT PAGE 113 OF RS, AT THE REQUEST OF  
GERALD C. HENDERSON. RECORDING NO. 3912

FEE 5.00

John Hagen Gronwald  
COUNTY RECORDER

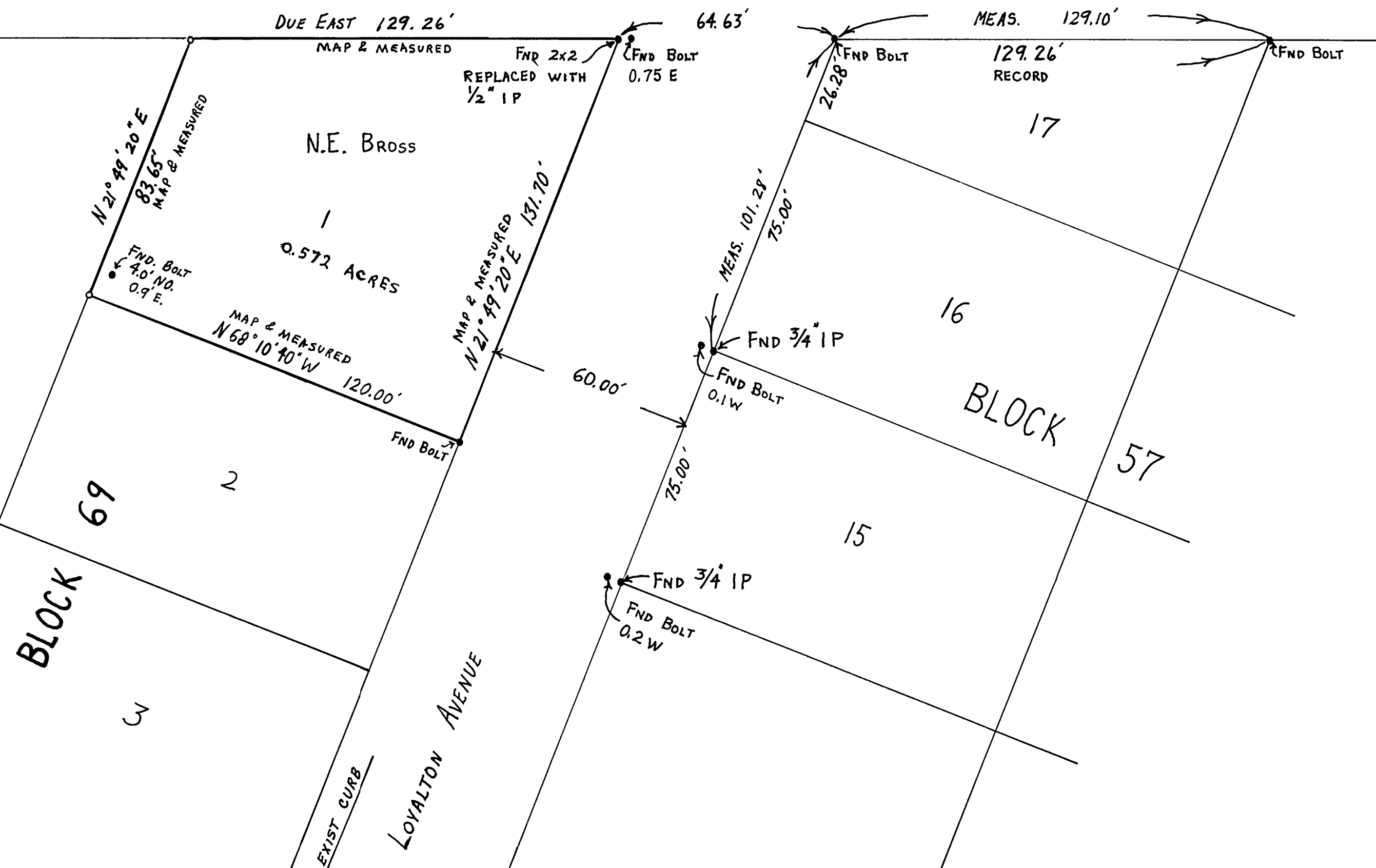
ALPINE ACRES

PORTOLA CITY LIMITS

DUE EAST

JOY WAY

PROPOSED  
PUBLIC PARK



# RECORD OF SURVEY

LOT 1 BLOCK 69  
AMENDED 2<sup>ND</sup> NORTH ADDITION  
TO PORTOLA TOWNSITE  
PORTOLA, PLUMAS COUNTY  
CALIFORNIA

A PORTION OF SECTION 36 T.23N, R.13E, M.D.B.&M.

SURVEY OF THE LAND OF N.E. BROSS

SCALE 1" = 30'

GERALD C. HENDERSON  
LAND SURVEYOR