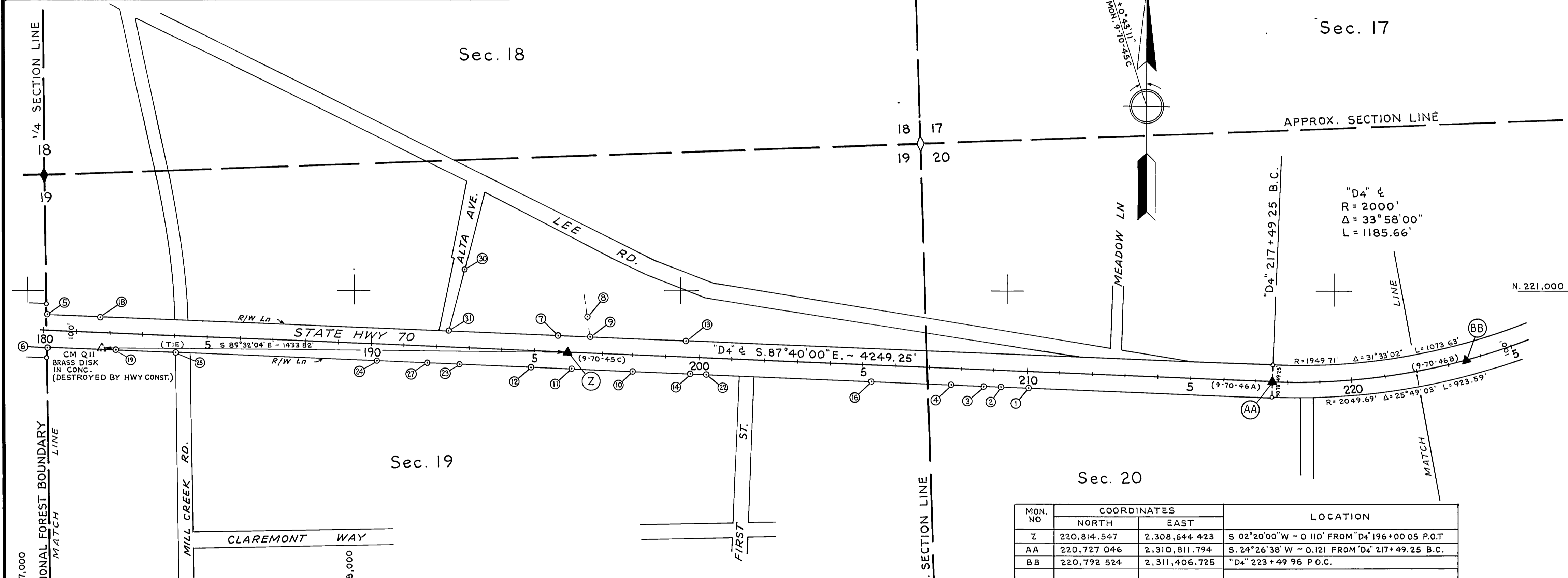


- FOUND POINTS -

- LEGEND -

SEC	PT	COORDINATES		DESCRIPTION	RECORDED AT			SEC	PT	COORDINATES		DESCRIPTION	RECORDED AT		
		NORTH	EAST		BK	OF	PG			NORTH	EAST		BK	OF	PG
19	24	220,787.699	2,308,076.036	1 3/8" O.D.I.P.				19	14	220,749.031	2,309,035.065	1 1/4" O.D.I.P. W/TAG (ILLEGIBLE)	1	"RS"	24
19	27	220,781.233	2,308,232.620	1/2" RE-BAR	3	"RS"	22A	19	22	220,746.980	2,309,085.625	1 1/4" O.D.I.P. (NO TAG)	1	"RS"	24
19	23	220,777.372	2,308,331.610	1 1/4" O.D.I.P. W/TAG JOHN C SIMPSON RCE 11173	3	"RS"	22A	19	16	220,726.354	2,309,586.239	1/2" RE-BAR W/PLASTIC CAP JOHN C SIMPSON, RCE 11173			
19	31	220,878.926	2,308,300.231	BOLT W/1" SQ HEAD IN PAVEMENT	2	"RS"	78	20	4	220,716.470	2,309,829.542	1 1/8" O.D.I.P. W/TAG L.S. 2587			
19	30	221,063.061	2,308,343.799	1/2" RE-BAR W/PLASTIC CAP STAMPED RCE 11173	2	"PM"	74	20	3	220,713.036	2,309,932.075	3/4" O.D.I.P. W/TAG JOHN C. SIMPSON RCE 11173			
19	12	220,768.969	2,308,541.946	3/4" O.D.I.P. W/TAG RCE 7567	3	"RS"	48	20	2	220,710.585	2,309,984.794	1 1/8" O.D.I.P. W/TAG L.S. 2587			
19	7	220,865.443	2,308,627.596	"X" IN CONC. SIDEWALK	2	"PM"	74	20	1	220,706.743	2,310,066.597	1 1/8" O.D.I.P.			
19	11	220,763.887	2,308,668.857	1/2" RE-BAR	3	"RS"	48								
19	8	220,921.453	2,308,726.424	1 1/4" O.D.I.P. W/TAG L.S. 2702	2	"RS"	78								
19	9	220,861.474	2,308,727.490	1" O.D.I.P.	2	"PM"	74								
19	10	220,756.273	2,308,858.354	1 1/4" O.D.I.P.	3	"RS"	24								
19	13	220,849.849	2,309,016.940	1 3/8" O.D.I.P.	2	"RS"	78								

▲	SURVEY MONUMENT, SET STANDARD BRASS DISK IN CONCRETE, STAMPED AS NOTED.	●	PROPERTY MONUMENT FOUND AND REMOVED.
◆	SECTION OR FRACTIONAL CORNER, FOUND.	◇	SECTION OR FRACTIONAL CORNER, NOT LOCATED.
■	MONUMENT, SET T-BAR W/TAG, "DIST. SURV. ENGR."	□	MONUMENT, AS NOTED.
○	NO MONUMENT SET.		
⊙	PROPERTY MONUMENT, FOUND.		



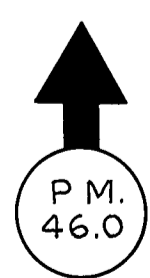
MON. NO	COORDINATES		LOCATION
	NORTH	EAST	
Z	220,814.547	2,308,644.423	S 02° 20' 00\" W ~ 0 110' FROM "D4" 196+00 05 P.O.T
AA	220,727.046	2,310,811.794	S. 24° 26' 38\" W ~ 0.121 FROM "D4" 217+49.25 B.C.
BB	220,792.524	2,311,406.725	"D4" 223+49.96 P.O.C.

NOTE: REFER TO SHEET 6 FOR DESCRIPTION OF MONUMENTS PLOTTED WEST OF MILL CREEK RD.

SURVEYOR'S CERTIFICATE

THIS MAP CORRECTLY REPRESENTS A SURVEY MADE BY ME OR UNDER MY DIRECTION IN CONFORMANCE WITH THE REQUIREMENTS OF THE LAND SURVEYOR'S ACT AT THE REQUEST OF DEPARTMENT OF TRANSPORTATION IN March, 1977.

GEORGE E. PERRY R.C.E. 10148
CHIEF, ENGINEERING SERVICES



SUPPLEMENTARY INFORMATION MAY BE OBTAINED FROM THE DISTRICT OFFICE, SURVEY DEPARTMENT OR RIGHT OF WAY ENGINEERING DEPT, 1657 RIVERSIDE DR. REDDING, CALIFORNIA

EXCEPTING THOSE SHOWN OTHERWISE, ALL DISTANCES AND BEARINGS ARE GRID, BASED ON CALIFORNIA COORDINATE SYSTEM, ZONE I. TO OBTAIN GROUND LEVEL DISTANCES, MULTIPLY GRID DISTANCES SHOWN BY 1.000150

GRID WAS ESTABLISHED FROM U.S.C. & G.S. TRIANGULATION STATION

* "QUINCY"	N 223,672.61	* "RADIO HILL"	N 223,005.19
	E 2,293,761.78		E 2,300,677.10

STATE OF CALIFORNIA
BUSINESS AND TRANSPORTATION AGENCY
DEPARTMENT OF TRANSPORTATION
DISTRICT 02
**RECORD OF SURVEY
OF MONUMENTATION
IN PLUMAS COUNTY**
ON ROUTE 70
P.M. 42.1 TO P.M. 47.0

PREPARED BY BOB BREUNING_CHKD. BY RON HALL
DRAWN BY W.J. ZIEGLER DATE MARCH 1977
SCALE: 1" = 200' SHEET 7 OF 8

CERTIFICATE OF CORRECTION
SEE Vol. 283, PAGE 526
OFFICIAL RECORDS 1/25/78