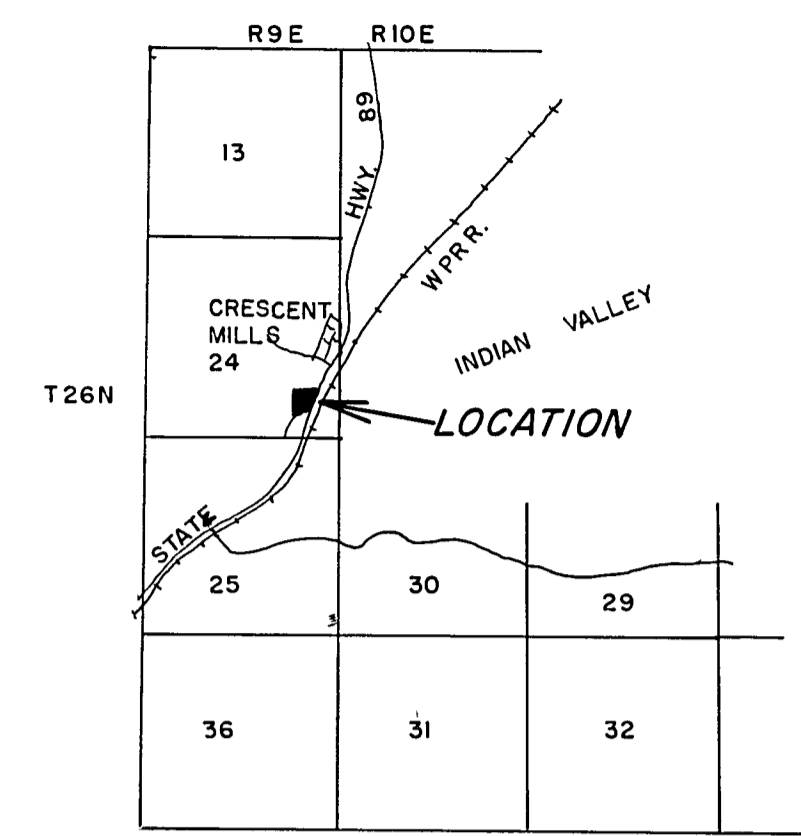


1/16 Section Corner &  
SW Corner Lot 22 Block 6  
Crescent Mills Townsite  
Fnd. 3/4" IP L.S. 2621  
as shown on 2 RS 131  
N 279,199.65  
E 2,302,506.95

1/16 Section Corner  
Set 3/4" IP tagged  
R.C.E. 18344  
N 279,232.86  
E 2,303,856.41

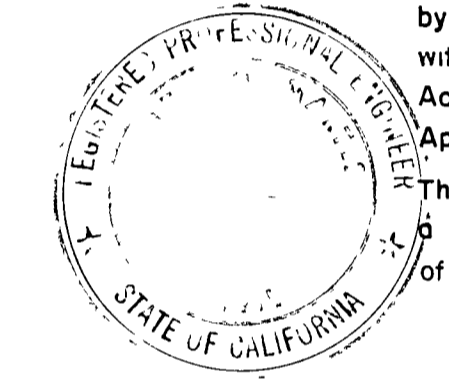
Location of the East 1/4 Corner of Section 24 as calculated from the State of California Division of Highways monuments (Not Set) N 280,588.32 E 2,305,196.68 Set Nail & Shiner in Highway 89

1/16 Section Corner (Not Set)  
N 279,266.07  
E 2,305,205.87



VICINITY MAP  
SCALE 1" = 1mi

Scale 1" = 100'



**SURVEYOR'S CERTIFICATE**

This map correctly represents a survey made by me or under my direction in conformance with the requirements of the Land Surveyor's Act at the request Dwight E. Sanders in April 1977.

This Record of Survey does not constitute a subdivision under Division 2 of Title 7, of Government Code

*W.H. Martes*  
Walter H. Martes R.C.E. 18344

**COUNTY SURVEYOR'S CERTIFICATE**

This map has been examined for conformance with the requirements of the Land Surveyor's Act this 5th day of August, 1977.

*Joseph J. Fite*  
Plumas County Surveyor

**RECORDER'S CERTIFICATE**

Filed this 10th day of August, 1977, at 8:50 A.M. in Book 4 of Record of Surveys, at page 132 at the request of Walter H. Martes.

Raynelle Staten  
County Recorder

Fee \$500  
File 132  
By *Kathie Doll*  
Deputy

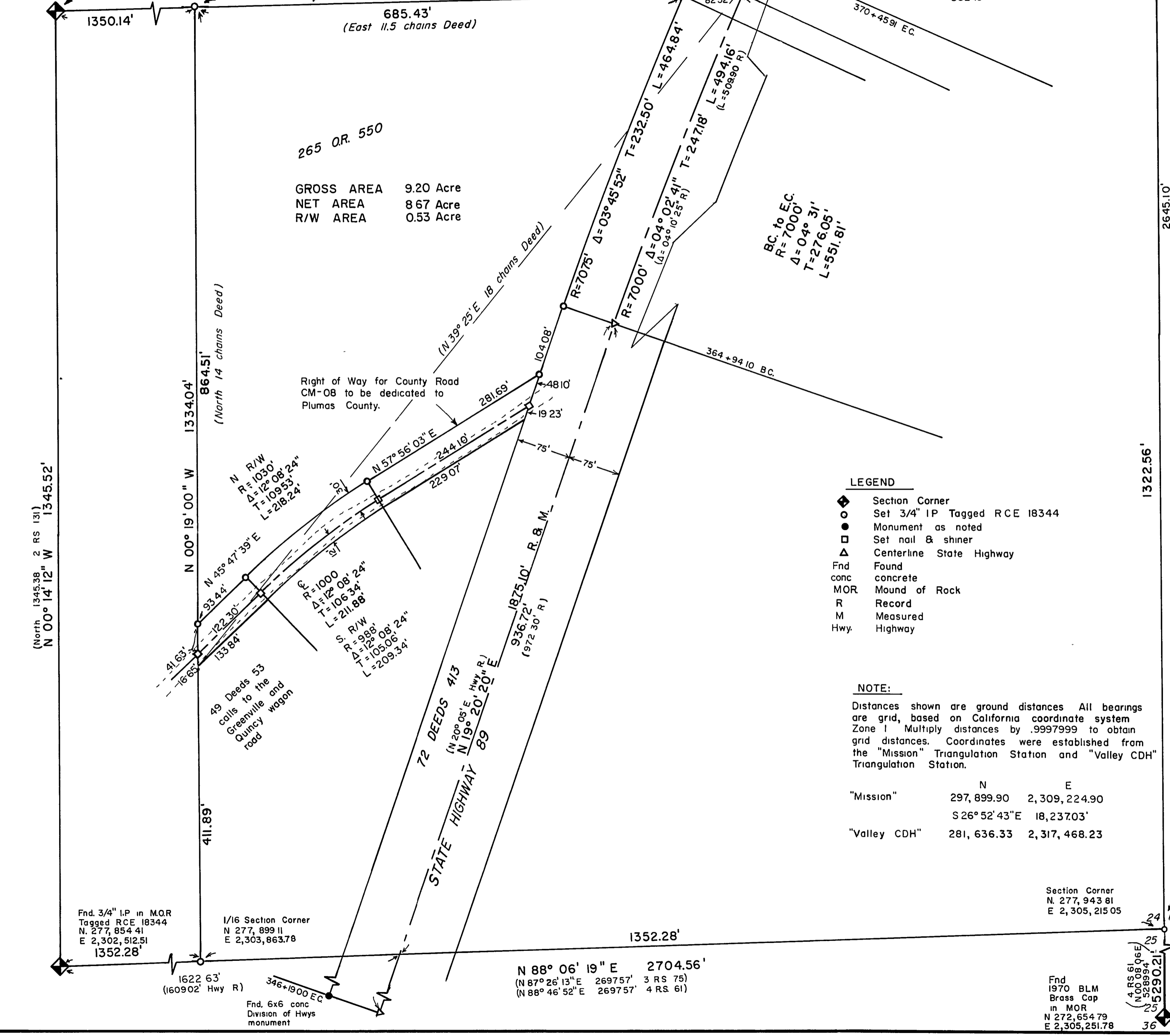
**RECORD OF SURVEY**

FOR  
DWIGHT E. & BEATRICE I. SANDERS  
A PORTION OF THE S.E. 1/4 OF  
THE S.E. 1/4 OF SECTION 24,  
T.26N., R.9E., M.D.B. & M.  
PLUMAS COUNTY, CALIFORNIA

APRIL 1977 SCALE 1" = 100'  
SHEET 1 OF 1

(North 1345.38' 2 RS 131)  
N 00° 14' 12" W 1345.52'

N 00° 23' 53" W 7935.31'  
(N 01° 01' 49" W 7934.92' 3 RS 75)



265 OR. 550  
GROSS AREA 9.20 Acre  
NET AREA 8.67 Acre  
R/W AREA 0.53 Acre

**LEGEND**

- ◆ Section Corner
- Set 3/4" IP Tagged RCE 18344
- Monument as noted
- Set nail & shiner
- △ Centerline State Highway
- Fnd conc concrete
- MOR Mound of Rock
- R Record
- M Measured
- Hwy. Highway

**NOTE:**

Distances shown are ground distances. All bearings are grid, based on California coordinate system Zone 1. Multiply distances by .9997999 to obtain grid distances. Coordinates were established from the "Mission" Triangulation Station and "Valley CDH" Triangulation Station.

	N	E
"Mission"	297,899.90	2,309,224.90
	S 26° 52' 43" E	18,237.03'
"Valley CDH"	281,636.33	2,317,468.23

Section Corner  
N 277,943.81  
E 2,305,215.05

Fnd 1970 BLM  
Brass Cap  
in MOR  
N 272,654.79  
E 2,305,251.78

1/10/78 Certificate of Correction  
see Official Records Vol. 283, page 65