

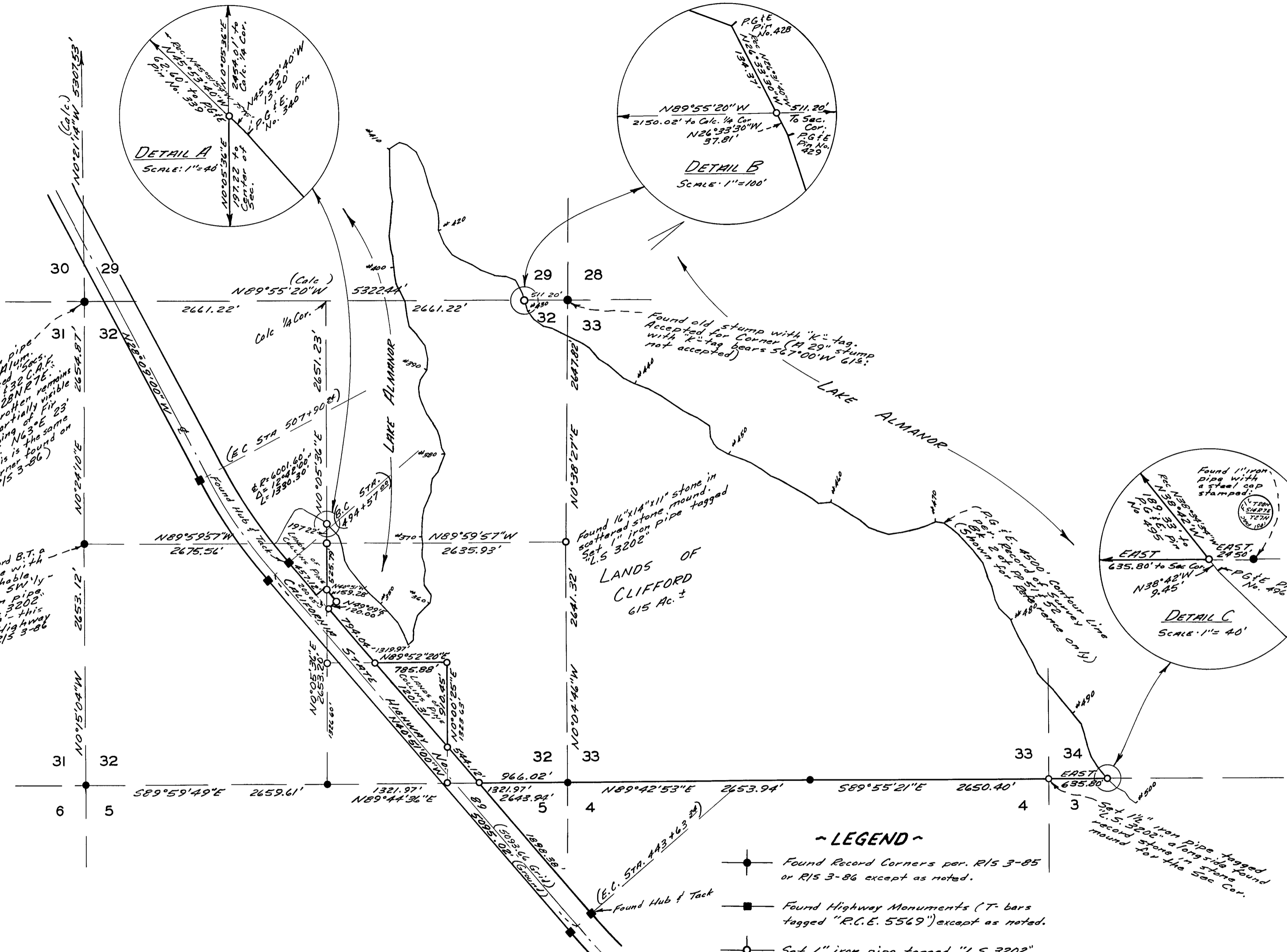
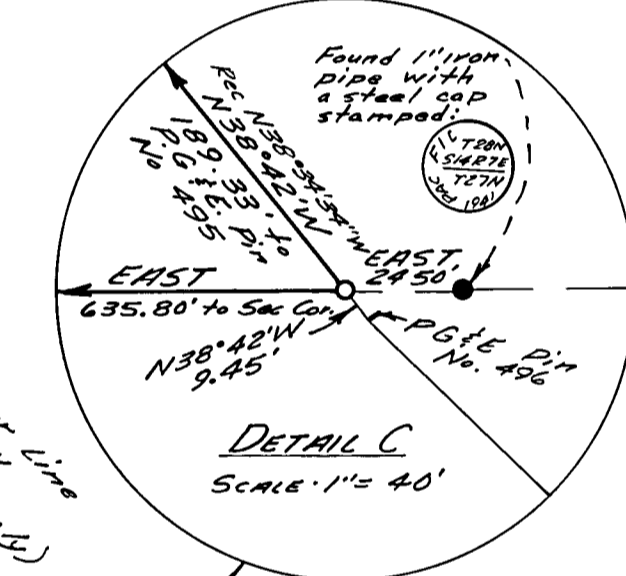
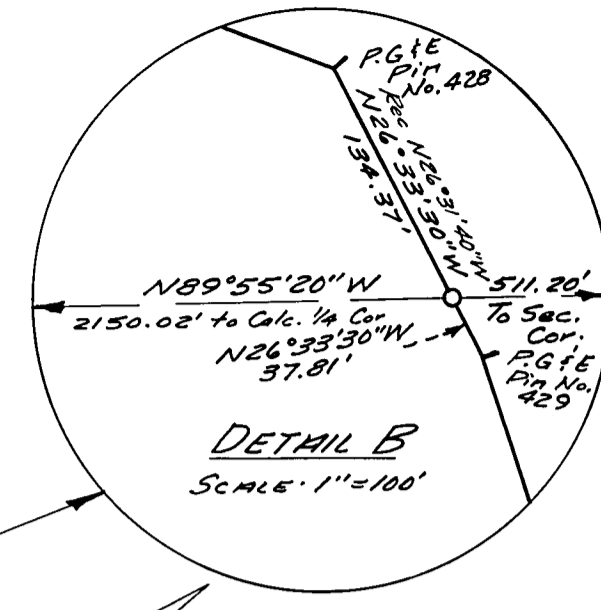
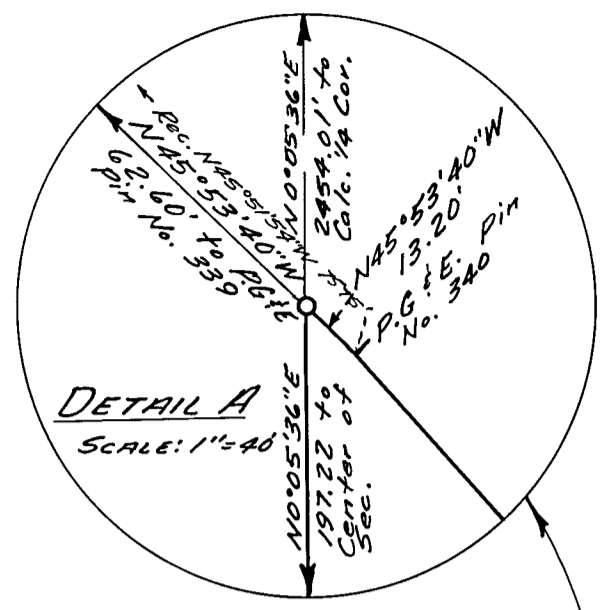


SCALE: 1"=800'

Basis of Bearings is True North calculated from State Plane Coordinates (Calif. Zone No. 1) given on State Highway No. 89.

Found 1" iron pipe with 2 1/2" cap. L.S. 3202. Found partially visible and scribbled over B.T. This is found on corner 215 3-86.

Accepted for Record B.T. a found 48" pine with indistinguishable blaze facing SW. Set 1 1/2" L.S. - this tagged Highway 537 W. Highway match has R15 3-86 ties per



~ LEGEND ~

- Found Record Corners per. R15 3-85 or R15 3-86 except as noted.
- Found Highway Monuments (T-bars tagged "R.C.E. 5569") except as noted.
- Set 1" iron pipe tagged "L.S. 3202" except as noted.

CERTIFICATES:

This survey correctly represents a survey made under my direction in conformance with the requirements of the Land Surveyors Act at the request of Edward Clifford, Sept. 1971.

Paul E. Simpson, No. 3202, Paul E. Simpson, Licensed Land Surveyor No. 3202

This map has been examined for conformance with the requirements of the Land Surveyors Act this 1st day of December, 1971.

Darrell P. Payne, Darrell P. Payne, R.C.E. 4596, Plumas County Surveyor

Filed this 2nd day of December, 1971 at Susanville, Cal., in Book 4 of Records of Survey of Page 5 at the request of Paul E. Simpson. Fee \$5.00 File No. 1971-11-11

Dorothy Near-Warley, Dorothy Near-Warley, Plumas County Recorder

RECORD OF SURVEY FOR EDWARD CLIFFORD

IN SECTIONS 29, 30, 33, 34 T28N17E, MDB & M PLUMAS COUNTY, CALIFORNIA

SCALE: 1"=800'

PAUL E. SIMPSON, & ASSOCIATES, ENGINEERS & SURVEYORS SUSANVILLE, CALIFORNIA

11RS5