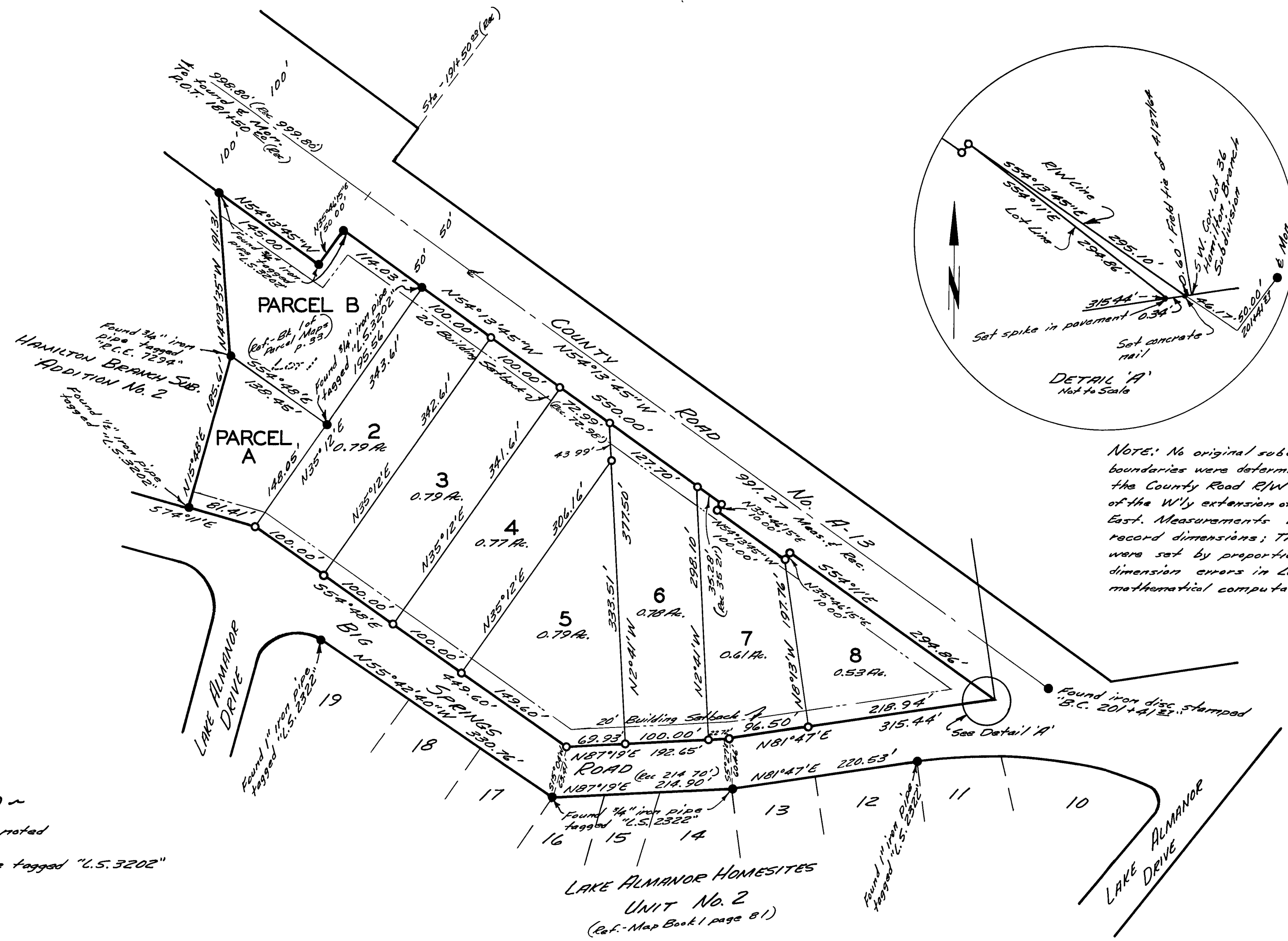




SCALE: 1" = 100'

Basis of Bearings is the South Line of County Road No. A-13 as shown on Hamilton Branch Subdivision Addition No. 5 filed in Book 3 of Maps at page 14.



- ~ LEGEND ~
- Found corners as noted
 - Set 3/4" iron pipe tagged "L.S. 3202"

NOTE: No original subdivision corners were found. The boundaries were determined by Parcels A & B on the West, the County Road R/W on the North, and a field intersection of the W'y extension of the South Line of Lot 36 on the East. Measurements between those points match record dimensions; The remaining subdivision corners were set by proportionate measurement. Certain dimension errors in Lots 4 & 7 were determined by mathematical computations.

CERTIFICATES

This survey correctly represents a survey made under my direction in conformity with the requirements of the Land Surveyor's Act at the request of M. F. Malvich.

Paul E. Simpson, No. 3202, Paul E. Simpson, Licensed Land Surveyor, State of California

This map has been examined for conformance with the requirements of the Land Surveyor's Act this 28th day of June, 1972.

Darrell R. Payne, R.C.E. 8596, Plumas County Surveyor

Filed this 28th day of June, 1972 at 3:13 P.M. in Book 4 of Records of Surveyors at Page 14 at the request of Paul E. Simpson. Fee: \$5.00 File No. 6793

Dorothy New Marley, Dorothy New Marley, Plumas County Recorder

RECORD OF SURVEY FOR

M. F. MALVICH

OF LOTS 2, 3, 4, 5, 6, 7, & 8 HAMILTON BRANCH SUBDIVISION ADDITION NO. 5, PLUMAS COUNTY, CALIFORNIA

SCALE: 1" = 100'

PAUL E. SIMPSON, & ASSOCIATES, ENGINEERS & SURVEYORS SUSANVILLE, CALIFORNIA

Handwritten initials or notes.