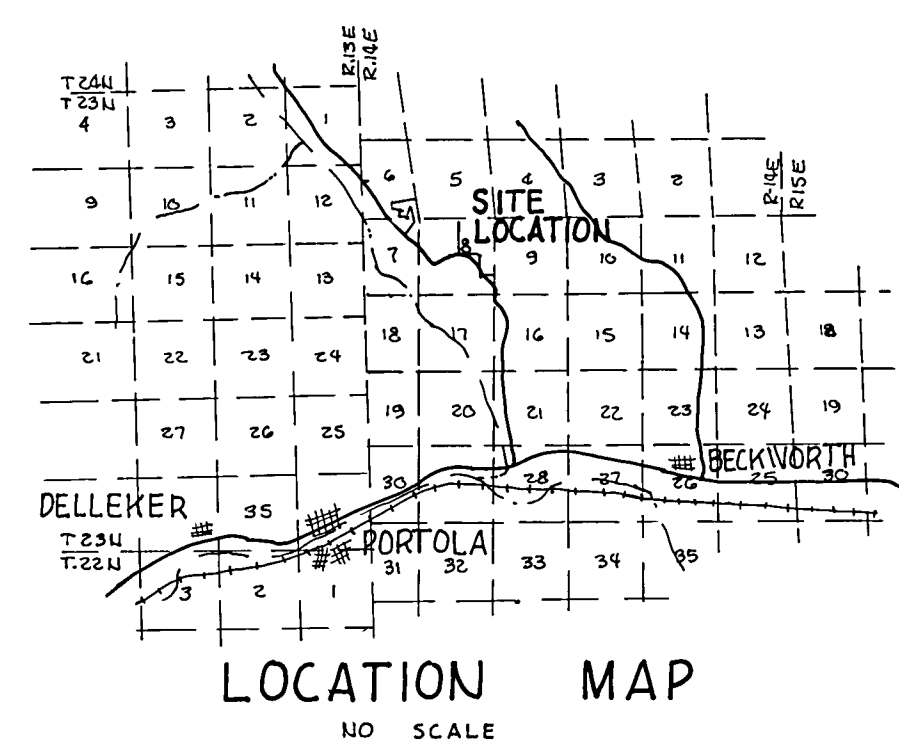
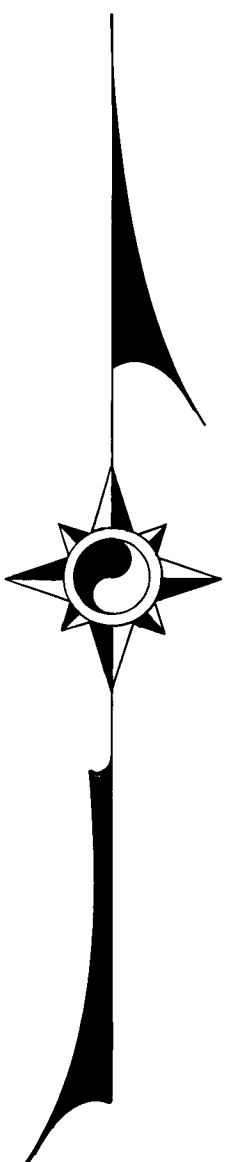


2 1 11 12

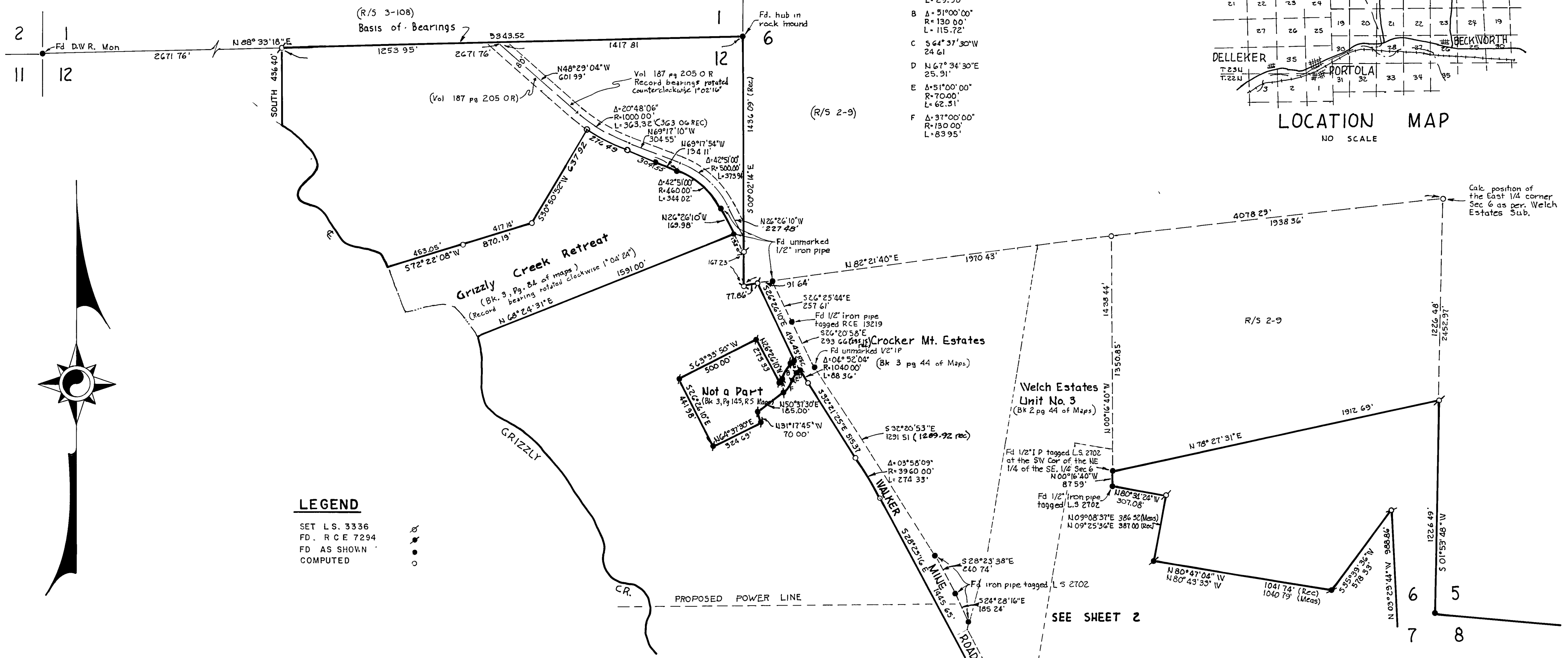


- A Δ=24°28'20" R=70.00' L=29.90'
- B Δ=51°00'00" R=130.00' L=115.72'
- C Δ=64°37'30"W 24.61'
- D Δ=67°34'30"E 25.31'
- E Δ=51°00'00" R=70.00' L=62.31'
- F Δ=37°00'00" R=130.00' L=83.95'



**LEGEND**

- SET L.S. 3336
- FD. R.C.E. 7294
- FD AS SHOWN
- COMPUTED



**SURVEYOR'S CERTIFICATE**

THIS MAP CORRECTLY REPRESENTS A SURVEY MADE BY ME OR UNDER MY DIRECTION IN CONFORMANCE WITH THE REQUIREMENTS OF THE LAND SURVEYORS ACT AT THE REQUEST OF ROBERT CHESLEY IN AUGUST, 1972.

*Max L. Albert*  
 MAX L. ALBERT L.S. 3336

**COUNTY ENGINEER'S CERTIFICATE**

THIS MAP HAS BEEN EXAMINED FOR CONFORMANCE WITH THE REQUIREMENTS OF THE LAND SURVEYORS ACT THIS 10<sup>th</sup> DAY OF NOVEMBER, 1972.

*Darrell P. Payne*  
 DARRELL P. PAYNE R.C.E. 8596

**NOTES**

THE BASIS OF BEARINGS OF THIS MAP IS THE NORTH LINE OF SECTION 12 GIVEN AS N88°33'18"E ON THAT CERTAIN AMENDED MAP FILED DECEMBER 26, 1967, IN BOOK 3 OF RECORD OF SURVEYS AT PAGE 108, PLUMAS COUNTY OFFICIAL RECORDS.

TOTAL AREA 867± AC.  
DISTANCES SHOWN ARE BOTH RECORD AND MEASURED, AND BEARINGS SHOWN ARE RECORD BEARINGS ROTATED THROUGH THE INDICATED ANGLE, UNLESS OTHER WISE NOTED

**RECORDER'S CERTIFICATE**

FILED FOR RECORD THIS 10<sup>th</sup> DAY OF November, 1972, AT 4:45 P.M. IN BOOK 4 OF RECORD OF SURVEYS AT PAGE 19 AT THE REQUEST OF WALTER B. GRIMES. RECORDING NO. 2241

FEE 9.00

*Dorothy New Marley*  
 COUNTY RECORDER

**RECORD OF SURVEY MAP**  
 PORTIONS OF SECTION 12, T.23N, R.13E., M.D.B. & M.,  
 AND SECTIONS 6, 7 & 8, T.23N, R.14E., M.D.B. & M.  
 PLUMAS COUNTY CALIFORNIA

MAP OF THE LANDS OF ROBERT E. CHESLEY

SCALE 1" = 400' AUGUST, 1972

**G. WALTER B. ASSOC.**  
**GRIMES and ASSOC.**  
 CIVIL ENGINEERS AND LAND SURVEYORS  
 1356 MANGROVE AVENUE, CHICO, CALIFORNIA