

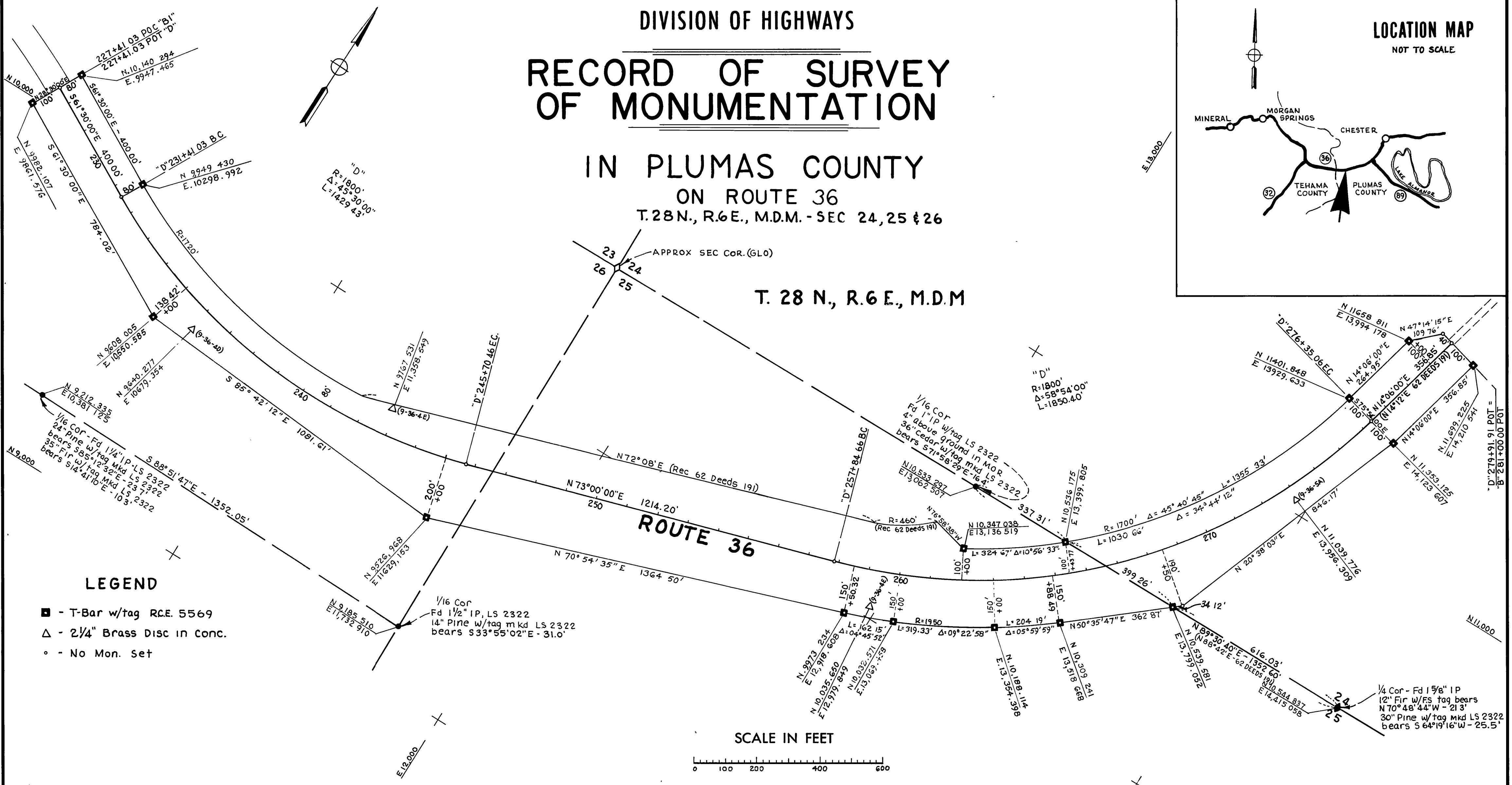
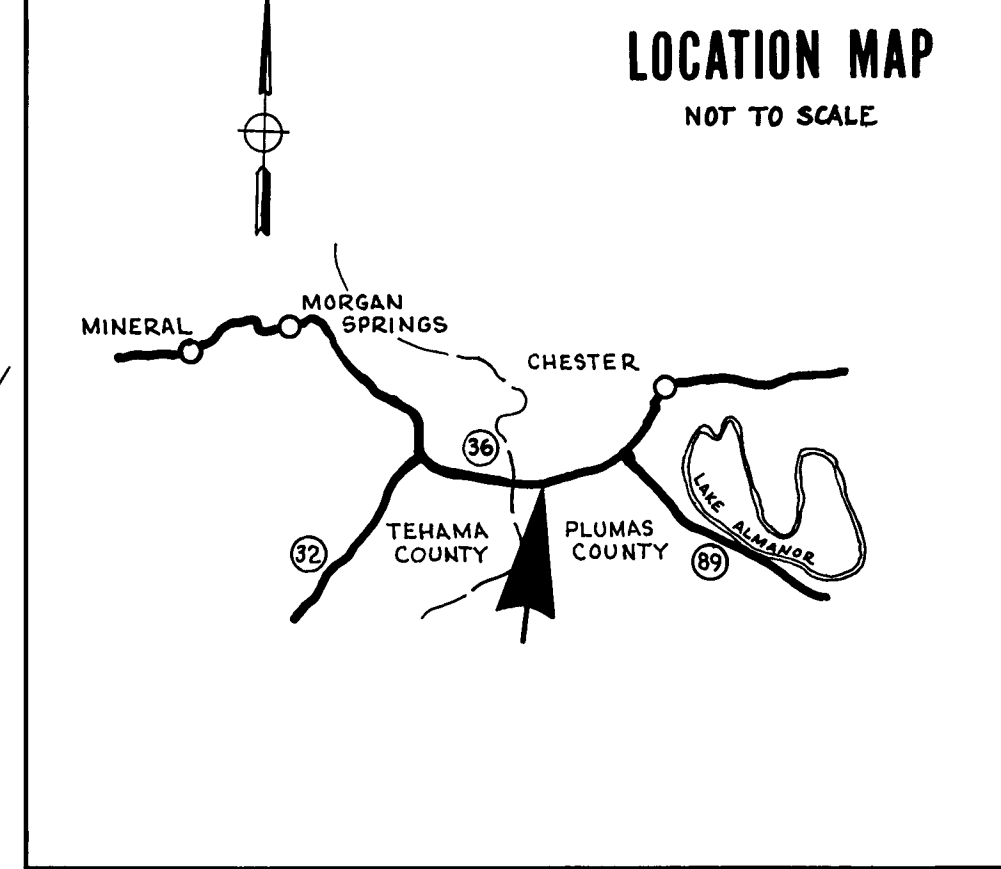
NOTE
 Basis of Bearings is Existing
 State Highway
 Coordinates are assumed
 Distances are Surface

STATE OF CALIFORNIA
 BUSINESS AND TRANSPORTATION AGENCY
 DEPARTMENT OF PUBLIC WORKS
 DIVISION OF HIGHWAYS

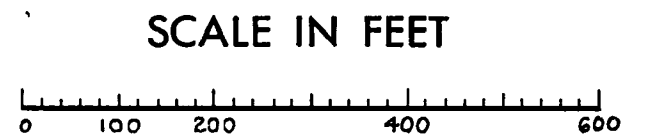
**RECORD OF SURVEY
 OF MONUMENTATION**

IN PLUMAS COUNTY
 ON ROUTE 36
 T.28N., R.6E., M.D.M. - SEC 24, 25 & 26

T. 28 N., R. 6 E., M.D.M



- LEGEND**
- - T-Bar w/tag R.C.E. 5569
 - △ - 2 1/4" Brass Disc in conc.
 - - No Mon. set



SURVEYOR'S CERTIFICATE
 THIS MAP CORRECTLY REPRESENTS A SURVEY MADE BY ME
 OR UNDER MY DIRECTION IN CONFORMANCE WITH THE
 REQUIREMENTS OF THE LAND SURVEYOR'S ACT AT THE
 REQUEST OF CALIFORNIA DIVISION OF HIGHWAYS
 IN NOVEMBER 1972
 H S MILES, RCE 5569
 DISTRICT ENGINEER



COUNTY SURVEYOR'S CERTIFICATE
 THIS MAP HAS BEEN EXAMINED FOR CONFORMANCE WITH THE
 REQUIREMENTS OF THE LAND SURVEYOR'S ACT THIS 1st
 DAY OF DECEMBER 1972
 Darrell P. Payne
 COUNTY SURVEYOR

RECORDER'S CERTIFICATE
 FILED THIS 4th DAY OF December, 1972, AT 2:30 PM
 IN BOOK 4 OF R-5 AT PAGE 23
 AT THE REQUEST OF County Engineer
 Dorothy New Maskey
 COUNTY RECORDER