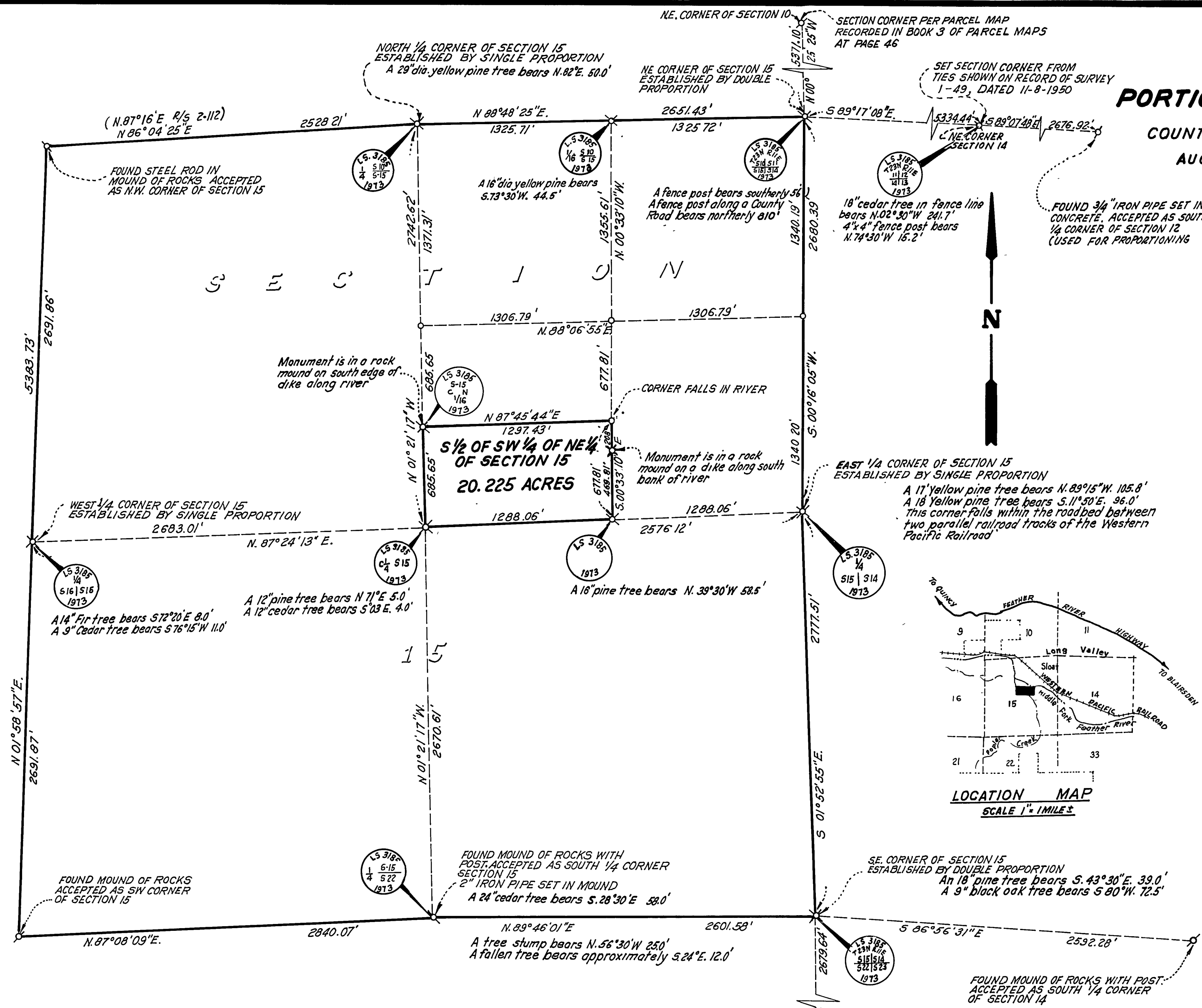


RECORD OF SURVEY PORTION OF SECTION 15, T.23N., R.1E., M.D.M.

COUNTY OF PLUMAS
AUGUST, 1973
CALIFORNIA
SCALE: 1"=500'

THE SPINK CORPORATION



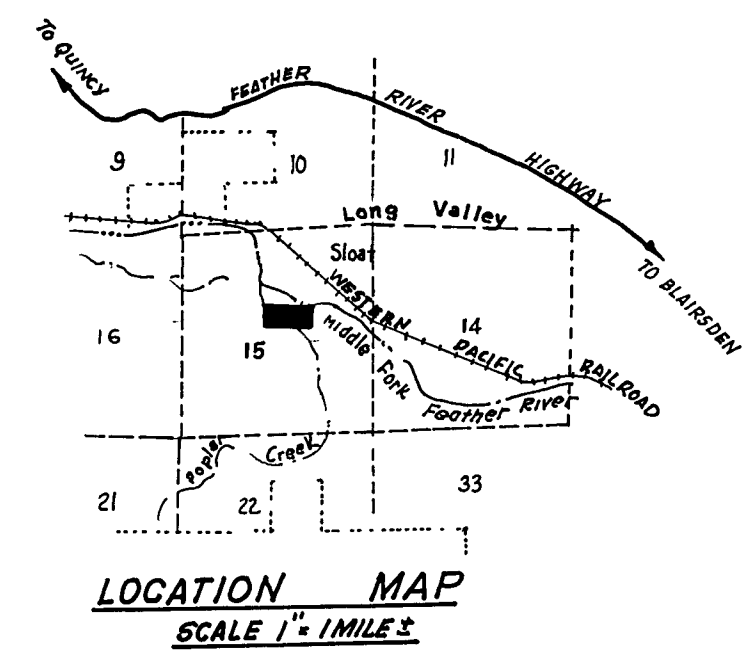
LEGEND:

- Found monument as shown ----- \otimes
- No monument found or set. ----- \circ
- Set 2" iron pipe monuments with brass caps stamped L.S. 3185, 1973 in rock mounds and with appropriate corner designation as shown \otimes
- Record data in parentheses

SURVEYOR'S CERTIFICATE:

This map correctly represents a survey made by me or under my direction in conformance with the requirements of the Land Surveyor's Act at the request of United States Forest Service

James W. Edwards
JAMES W. EDWARDS L.S. 3185



COUNTY SURVEYOR'S CERTIFICATE:

This map has been examined for conformance with the requirements of the Land Surveyors Act this 9th day of November 1973

Danell P. Payne
COUNTY SURVEYOR, PLUMAS COUNTY

2075

RECORDER'S CERTIFICATE:

Filed this 9th day of November 1973, at 3:50 P.M. in Book 4 of Record of Survey Map No 32 at the request of The Spink Corporation.

Norothy New Marley
COUNTY RECORDER, PLUMAS COUNTY

NOTES:

- The meridian of this survey is true north as determined by solar observation
- All witness trees and fence posts are marked with U.S. Forest Service "K" tags