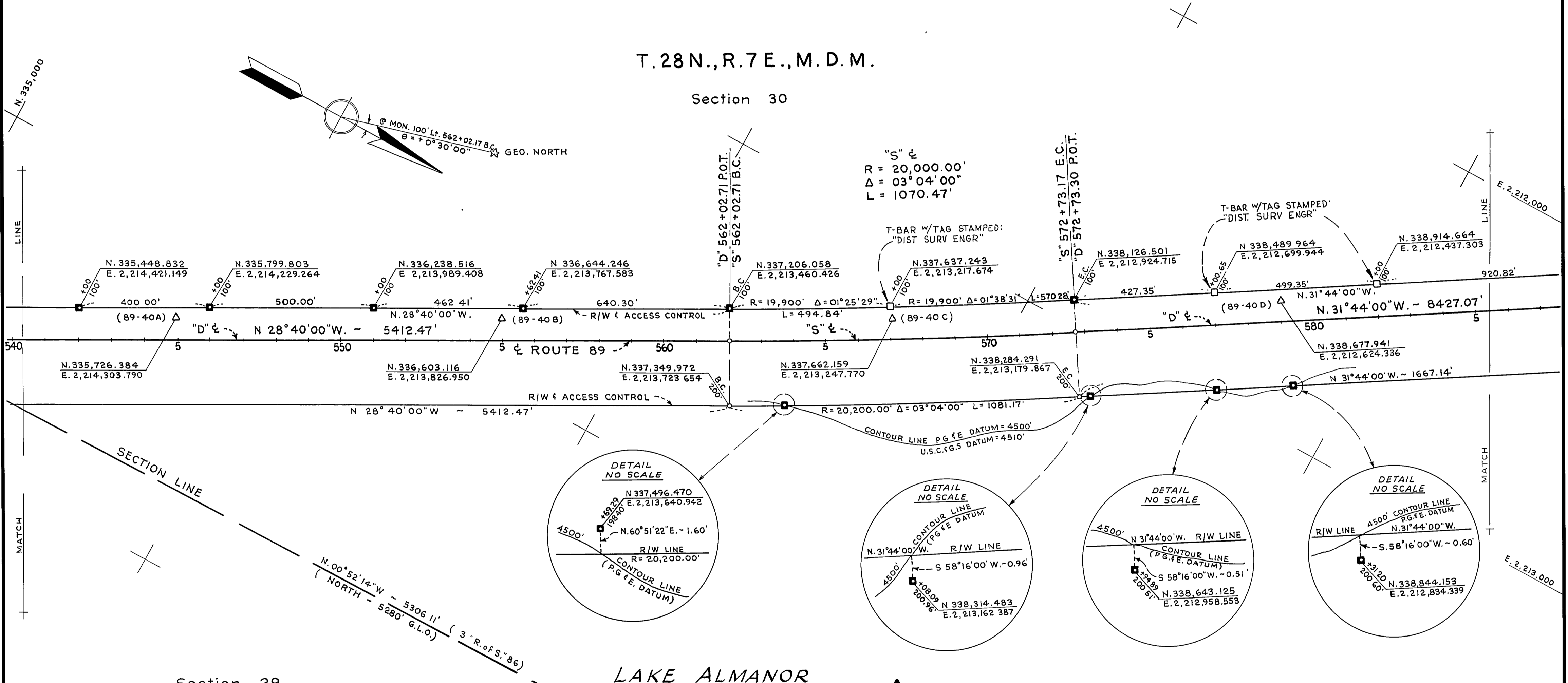


- FOUND POINTS -

SEC	PT	COORDINATES		DESCRIPTION	RECORDED AT			SEC	PT	COORDINATES		DESCRIPTION	RECORDED AT		
		NORTH	EAST		BK	OF	PG			BK	OF		PG		

- LEGEND -

- △ SURVEY MONUMENT, SET STANDARD BRASS DISK IN CONCRETE.
- MONUMENT, SET T-BAR w/TAG, R.C.E. 5569.
- MONUMENT, AS NOTED.
- NO MONUMENT SET.
- ⊙ PROPERTY MONUMENT, FOUND.
- PROPERTY MONUMENT FOUND AND REMOVED.
- ◆ SECTION OR FRACTIONAL CORNER, FOUND.
- ◇ SECTION OR FRACTIONAL CORNER, NOT LOCATED.



* BASED ON AUGUST, 1964 ADJUSTMENT.

EXCEPTING THOSE SHOWN OTHERWISE, ALL DISTANCES AND BEARINGS ARE GRID, BASED ON CALIFORNIA COORDINATE SYSTEM, ZONE I. TO OBTAIN GROUND LEVEL DISTANCES, MULTIPLY GRID DISTANCES SHOWN BY 1.0002675

GRID WAS ESTABLISHED FROM U.S.C. & G.S. TRIANGULATION STATION "ALMANOR" N. 314,252.510 * CHESTER AIRPORT N. 348,414.470 * E. 2,258,790.610 * E. 2,212,062.330 *

SUPPLEMENTARY INFORMATION MAY BE OBTAINED FROM THE DISTRICT OFFICE, SURVEY DEPARTMENT OR RIGHT OF WAY ENGINEERING DEPT, 1657 RIVERSIDE DR. REDDING, CALIFORNIA

N. 339,717.07
E. 2,214,710.72
Section Corner
Found dead Fallen
Larch w/scrubbing visible
(3" R. of S. '86)

STATE OF CALIFORNIA
BUSINESS AND TRANSPORTATION AGENCY
DEPARTMENT OF TRANSPORTATION
DISTRICT 02

**RECORD OF SURVEY
OF MONUMENTATION
IN PLUMAS COUNTY
ON ROUTE 89
P.M.R-374 TO P.M.R-42.2**

PREPARED BY BREUNING CHKD BY HALL
DRAWN BY ZIEGLER DATE AUG. 1973
SCALE: 1" = 200' SHEET 5 OF 7