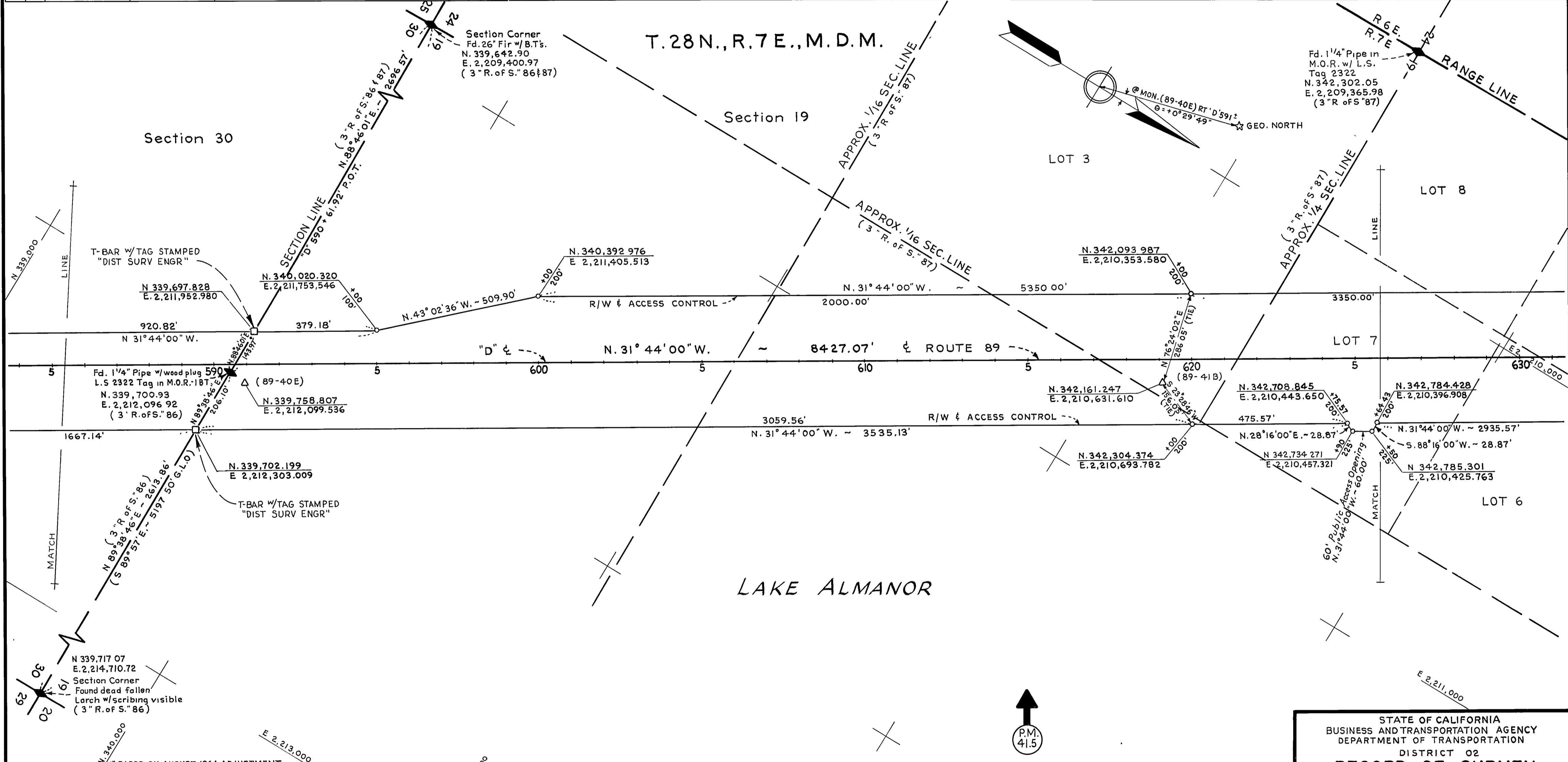


- FOUND POINTS -

- LEGEND -

SEC	PT	COORDINATES		DESCRIPTION	RECORDED AT			SEC	PT	COORDINATES		DESCRIPTION	RECORDED AT		
		NORTH	EAST		BK	OF	PG			NORTH	EAST		BK	OF	PG

△	SURVEY MONUMENT, SET STANDARD BRASS DISK IN CONCRETE.	●	PROPERTY MONUMENT FOUND AND REMOVED.
■	MONUMENT, SET T-BAR W/TAG, R.C.E. 5569	◆	SECTION OR FRACTIONAL CORNER, FOUND.
□	MONUMENT, AS NOTED	◇	SECTION OR FRACTIONAL CORNER, NOT LOCATED.
○	NO MONUMENT SET.		
⊙	PROPERTY MONUMENT, FOUND.		



\* BASED ON AUGUST, 1964 ADJUSTMENT.

EXCEPTING THOSE SHOWN OTHERWISE, ALL DISTANCES AND BEARINGS ARE GRID, BASED ON CALIFORNIA COORDINATE SYSTEM, ZONE 1. TO OBTAIN GROUND LEVEL DISTANCES, MULTIPLY GRID DISTANCES SHOWN BY 1.0002675

GRID WAS ESTABLISHED FROM U.S.C. & G.S. TRIANGULATION STATION "ALMANOR" N. 314,252.510 \* CHESTER AIRPORT N. 348,414.470 \* E. 2,258,790.610 \* E. 2,212,062.330 \*

SUPPLEMENTARY INFORMATION MAY BE OBTAINED FROM THE DISTRICT OFFICE, SURVEY DEPARTMENT OR RIGHT OF WAY ENGINEERING DEPT., 1657 RIVERSIDE DR., REDDING, CALIFORNIA.

STATE OF CALIFORNIA  
 BUSINESS AND TRANSPORTATION AGENCY  
 DEPARTMENT OF TRANSPORTATION  
 DISTRICT 02  
**RECORD OF SURVEY  
 OF MONUMENTATION  
 IN PLUMAS COUNTY  
 ON ROUTE 89**  
 P.M.R-374 TO P.M.R-422

PREPARED BY BREUNING\_CHKD BY HALL  
 DRAWN BY ZIEGLER DATE AUG 1973  
 SCALE: 1" = 200' SHEET 6 OF 7