

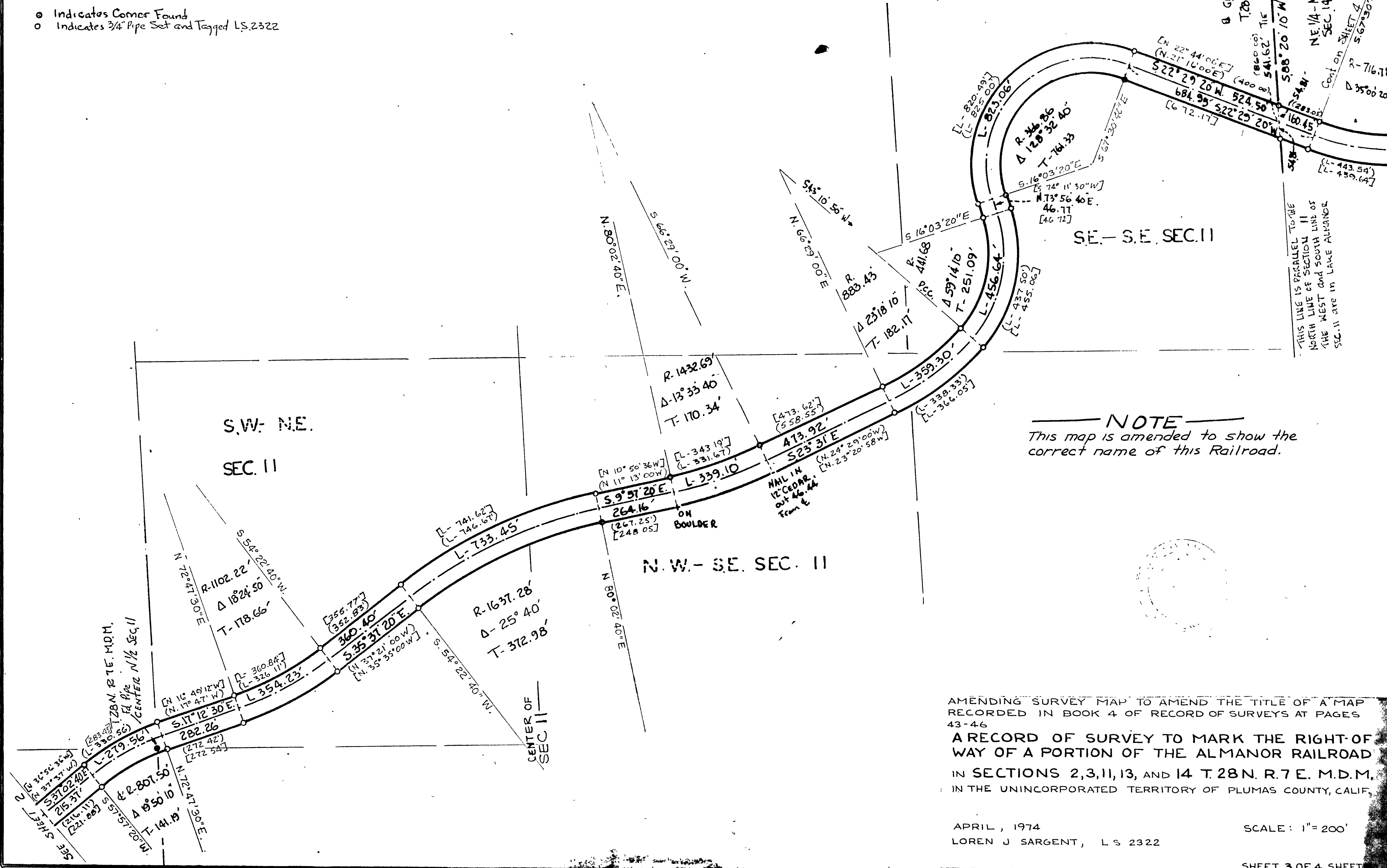
LEGEND

SCALE 1" = 200'

- Indicates Corner Found
- Indicates 3/4" Pipe Set and Tagged L.S. 2322

Basis of ~~Boundaries~~ Boundaries CARRIED FROM WEST SIDE NW 1/4 SEC. 3 T. 28 N. R. 7 E.

R.S. 2 Page 107



NOTE
 This map is amended to show the correct name of this Railroad.

AMENDING SURVEY MAP TO AMEND THE TITLE OF A MAP RECORDED IN BOOK 4 OF RECORD OF SURVEYS AT PAGES 43-46
A RECORD OF SURVEY TO MARK THE RIGHT-OF-WAY OF A PORTION OF THE ALMANOR RAILROAD
 IN SECTIONS 2, 3, 11, 13, AND 14 T. 28 N. R. 7 E. M.D.M.
 IN THE UNINCORPORATED TERRITORY OF PLUMAS COUNTY, CALIF.

APRIL, 1974
 LOREN J SARGENT, L.S. 2322

SCALE: 1" = 200'

SHEET 3 OF 4 SHEET

T. 28 N. R. 7 E. Sec 2, 3, 11, 13, 14

4/RS 19