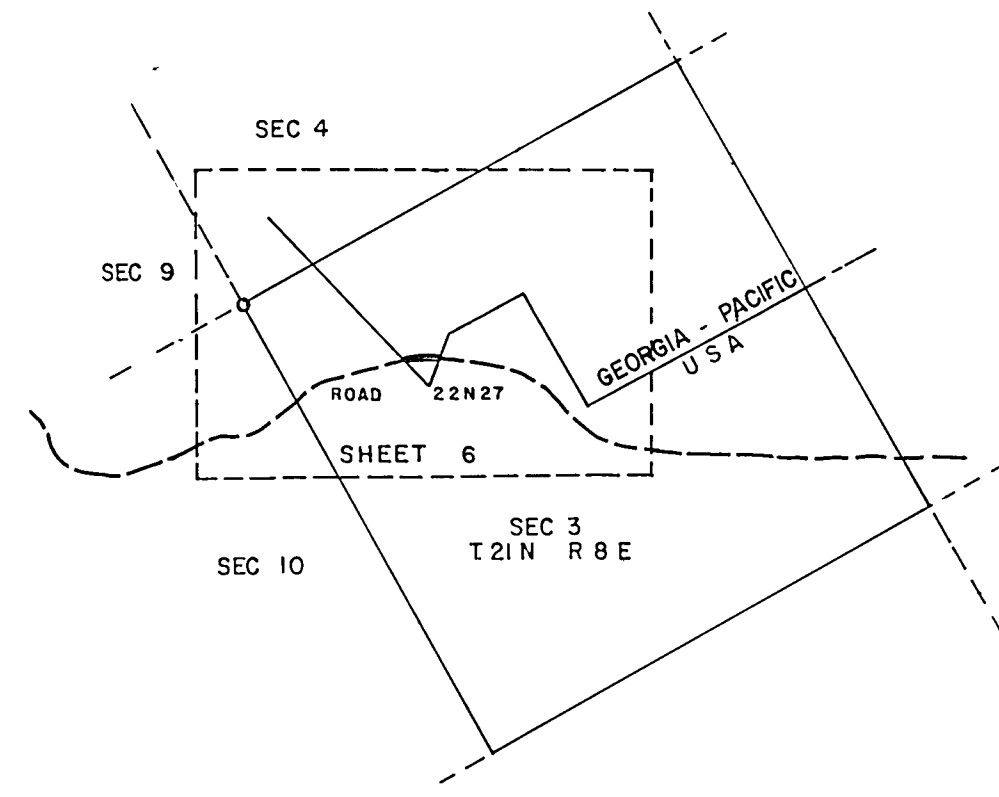


CALCULATED ROAD CENTERLINE TABULAR COURSES

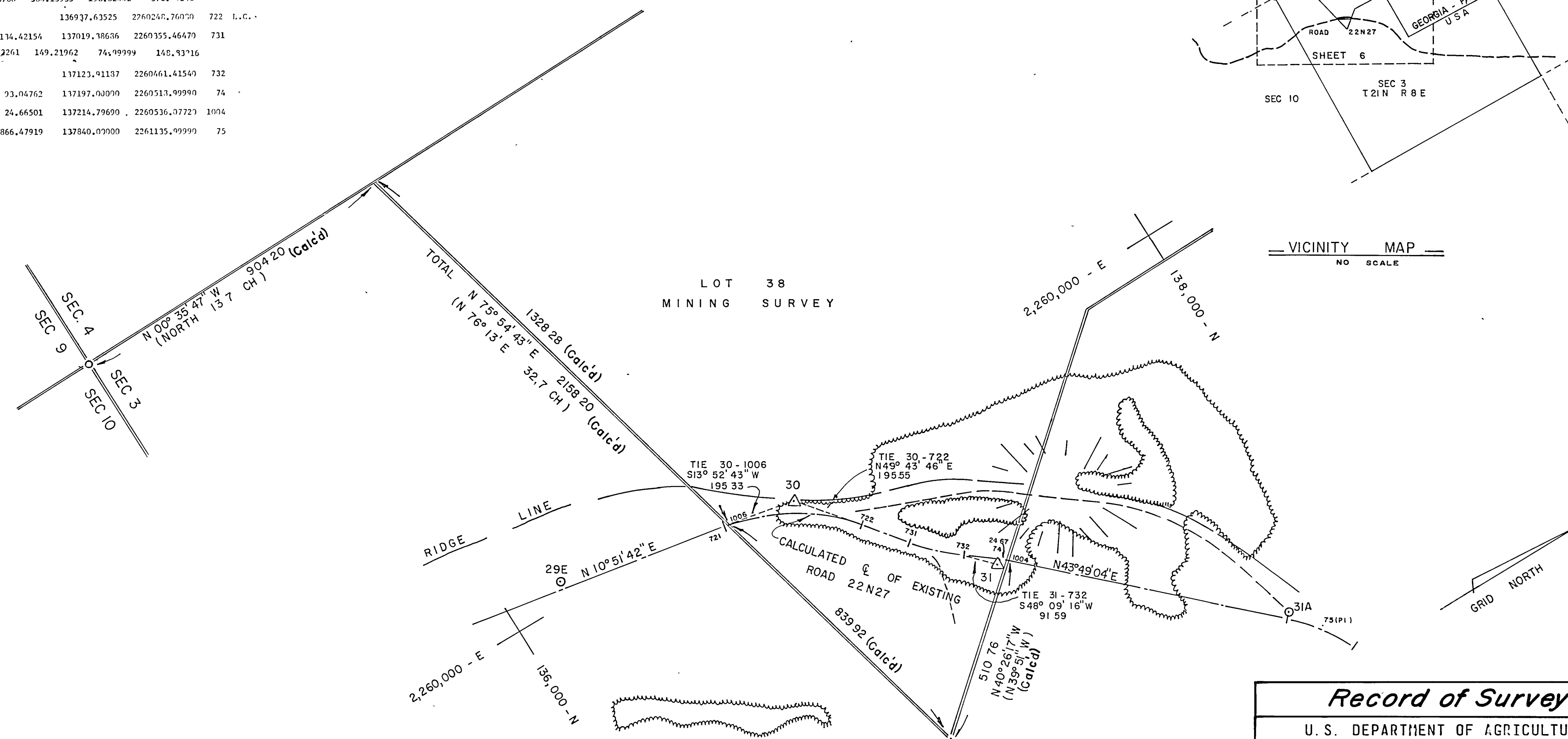
BEARING	DIST.	N COORDINATES	E	PT.
		135487.00000	2259835.00000	71
N 10° 51' 41.5" E	525.38760	136619.58299	2260052.31270	721
00 13 30.0		2.06319	1.03159	
		136621.60835	2260052.70549	1006
41 27 21.0	525.38760	389.13935	198.82002	371.00140
		136937.63525	2260246.76079	722
N 52° 32' 32.4" L	134.42154	137019.38636	2260355.46479	731
14 18 30.6	597.52261	149.21962	74.99999	148.93716
		137123.91187	2260461.41549	732
N 38° 14' 01.8" L	93.04762	137197.00000	2260513.99990	74
N 43° 49' 04.3" E	24.66501	137214.79690	2260536.07723	1004
N 43° 49' 04.3" E	866.47919	137840.00000	2261135.99990	75

CONTROL TRAVERSE TABULAR COURSES

PT.	BEARING	DIST.	N COORDINATES	E
29E			136166.725	2259944.703
30	N 13° 30' 37" E	662.850	136811.273	2260099.557
31	N 49° 00' 24" E	569.808	137185.011	2260529.641
31A	N 40° 59' 53" E	795.416	137785.337	2261051.459



VICINITY MAP
NO SCALE



LOT 38
MINING SURVEY

- LEGEND**
- TREE LINE
 - SECTION CORNERS FOUND BY U.S.F.S.
 - PROTRACTED OR PROJECTED CORNER* SET 1/2" x 30" GALV. I.P. TRAVERSE POINT
 - SET 1" x 36" COPPERWELD MONUMENT WITH BRASS CAP STAMPED WITH STATION NUMBER "LS 2798 1973. RD. NO. 22N27"
 - PHYSICAL SIDE ROAD INTERSECTING LUMPKIN ROAD
 - RIDGE LINE WITH PEAK OR SUMMIT
 - DRAINAGE LINE
 - *CALCULATED SECTION LINES UTILIZING GOV'T PLAT FIELD NOTES ROTATED TO GRID BEARING.
 - DIRT TRAIL

THIS PLAT WAS PHOTOGRAMMETRICALLY COMPILED FROM VERTICAL AERIAL PHOTOGRAPHS BY HOGAN, SCHOCH, & ASSOCIATES, INC. AND MEETS THE SPECIFICATIONS PREPARED BY THE U.S. FOREST SERVICE. THE PHOTOGRAMMETRIC SURVEY OF ROAD NO. 22N27, LUMPKIN RIDGE ROAD, INVOLVED THE SECURING OF VERTICAL AERIAL PHOTOGRAPHY, THE ESTABLISHMENT OF HORIZONTAL CONTROL, COMPILATION OF A PLANIMETRIC MAP, PROTRACTION AND PROJECTION OF THE LAND NET FROM RECOVERED AND TIED-IN AUTHENTIC PROPERTY CORNERS AND PLOTTING AND CALCULATION OF CENTERLINE POSITION AND DESCRIPTION. ALL DATA PERTINENT TO THIS SURVEY IS ON FILE AT THE FOLLOWING ADDRESS:

U.S. FOREST SERVICE
DIVISION OF ENGINEERING
SURVEYS AND MAPS BRANCH
630 SANSOME STREET
SAN FRANCISCO CALIFORNIA 94111

Record of Survey

U. S. DEPARTMENT OF AGRICULTURE
FOREST SERVICE

REGION 5 PLUMAS NATIONAL FOREST

RIGHT OF WAY PLAT
OF LUMPKIN RIDGE ROAD NO. 22 N 27

GRANTOR _____

SECTION 3 T 21 N R 8 E

COUNTY OF PLUMAS STATE OF CALIFORNIA

SCALE: 1"=200 FT. JANUARY 1974

BASIS OF BEARING: CALIFORNIA COORDINATE SYSTEM ZONE 1
BEARINGS AND DISTANCES ON MAP ARE GRID.
TO CONVERT GRID DISTANCES TO GEODETIC,
MULTIPLY BY 1.00014334.

GRID TRUE

HOGAN, SCHOCH & ASSOC. INC.
ENGINEERING SURVEYING PHOTOGRAMMETRY
258 PETALUMA AVE. SEBASTOPOL, CALIFORNIA (707) 823-4479

PROJECT # PHS 1480 SHEET 6 OF 9

4RS71