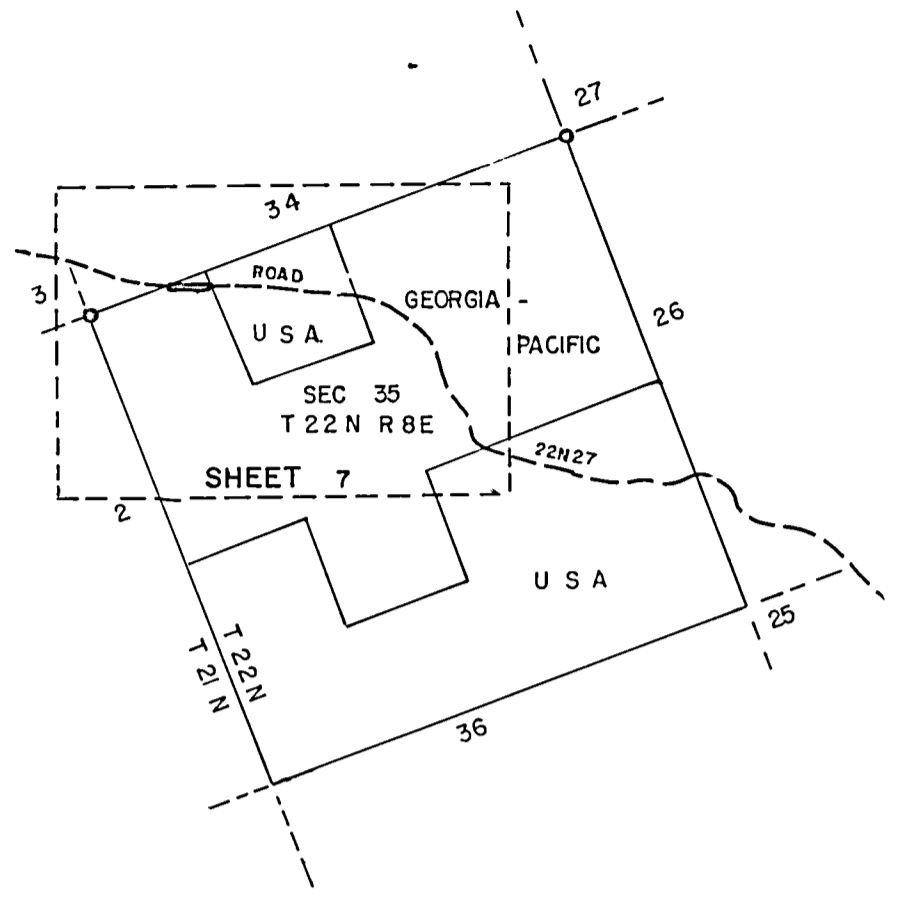
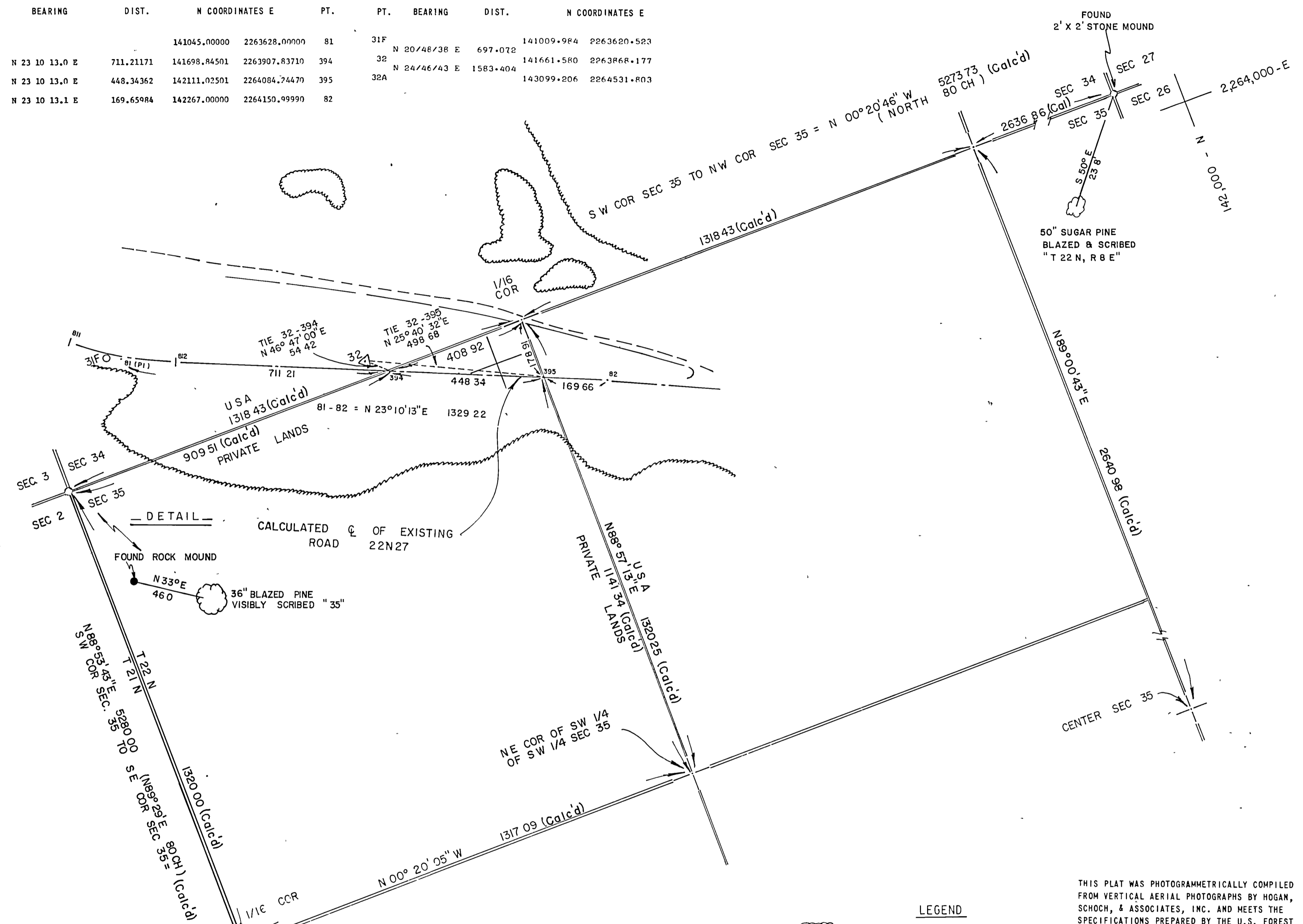


**CALCULATED ROAD CENTERLINE TABULAR COURSES**

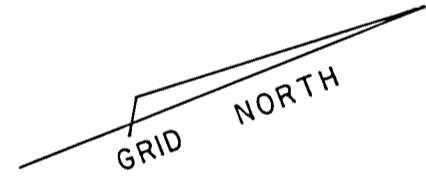
BEARING	DIST.	N COORDINATES	E	PT.
		141045.00000	2263628.00000	81
N 23 10 13.0 E	711.21171	141698.84501	2263907.83710	394
N 23 10 13.0 E	448.34362	142111.02501	2264084.74470	395
N 23 10 13.1 E	169.65984	142267.00000	2264150.99990	82

**CONTROL TRAVERSE TABULAR COURSES**

PT.	BEARING	DIST.	N COORDINATES	E
31F	N 20°48'38" E	697.072	141009.984	2263620.523
32	N 24°46'43" E	1583.404	141661.580	2263868.177
32A			143099.206	2264531.803



VICINITY MAP  
NO SCALE



- LEGEND**
- TREE LINE
  - FOUND SECTION CORNERS BY U.S.F.S.
  - PROTRACTED OR PROJECTED CORNER
  - SET 1/2" x 30" GALV. I.P. TRAVERSE POINT
  - SET 1" x 36" COPPERWELD MONUMENT WITH BRASS CAP STAMPED WITH STATION NUMBER "LS 2798 1973 RD NO. 22N24"
  - PHYSICAL SIDE ROAD INTERSECTING LUMPKIN ROAD
  - RIDGE LINE WITH PEAK OR SUMMIT
  - DRAINAGE LINE
  - \*CALCULATED SECTION LINES UTILIZING GOV'T PLAT FIELD NOTES ROTATED TO GRID BEARING
  - DIRT TRAIL

THIS PLAT WAS PHOTOGRAMMETRICALLY COMPILED FROM VERTICAL AERIAL PHOTOGRAPHS BY HOGAN, SCHOCH, & ASSOCIATES, INC. AND MEETS THE SPECIFICATIONS PREPARED BY THE U.S. FOREST SERVICE. THE PHOTOGRAMMETRIC SURVEY OF ROAD NO. 22N27, LUMPKIN RIDGE ROAD, INVOLVED THE SECURING OF VERTICAL AERIAL PHOTOGRAPHY, THE ESTABLISHMENT OF HORIZONTAL CONTROL, COMPILATION OF A PLANIMETRIC MAP, PROTRACTION AND PROJECTION OF THE LAND NET FROM RECOVERED AND TIED-IN AUTHENTIC PROPERTY CORNERS AND PLOTTING AND CALCULATION OF CENTERLINE POSITION AND DESCRIPTION. ALL DATA PERTINENT TO THIS SURVEY IS ON FILE AT THE FOLLOWING ADDRESS:

U.S. FOREST SERVICE  
DIVISION OF ENGINEERING  
SURVEYS AND MAPS BRANCH  
630 SANSOME STREET  
SAN FRANCISCO CALIFORNIA 94111

**Record of Survey**

U. S. DEPARTMENT OF AGRICULTURE  
FOREST SERVICE

REGION 5 PLUMAS NATIONAL FOREST

RIGHT OF WAY PLAT  
OF LUMPKIN RIDGE ROAD NO. 22 N 27

GRANTOR \_\_\_\_\_

SECTION 35 T 22 N R 8 E

COUNTY OF PLUMAS STATE OF CALIFORNIA

SCALE: 1"=200 FT. JANUARY 1974

BASIS OF BEARING: CALIFORNIA COORDINATE SYSTEM ZONE I  
BEARINGS AND DISTANCES ON MAP ARE GRID.  
TO CONVERT GRID DISTANCES TO GEODETIC,  
MULTIPLY BY 1.00014334.

HOGAN, SCHOCH & ASSOC. INC.

ENGINEERING SURVEYING PHOTOGRAMMETRY  
258 PETALUMA AVE. SEBASTOPOL, CALIFORNIA (707) 823-4479

PROJECT # PHS 1480 SHEET 7 OF 9

4RS72