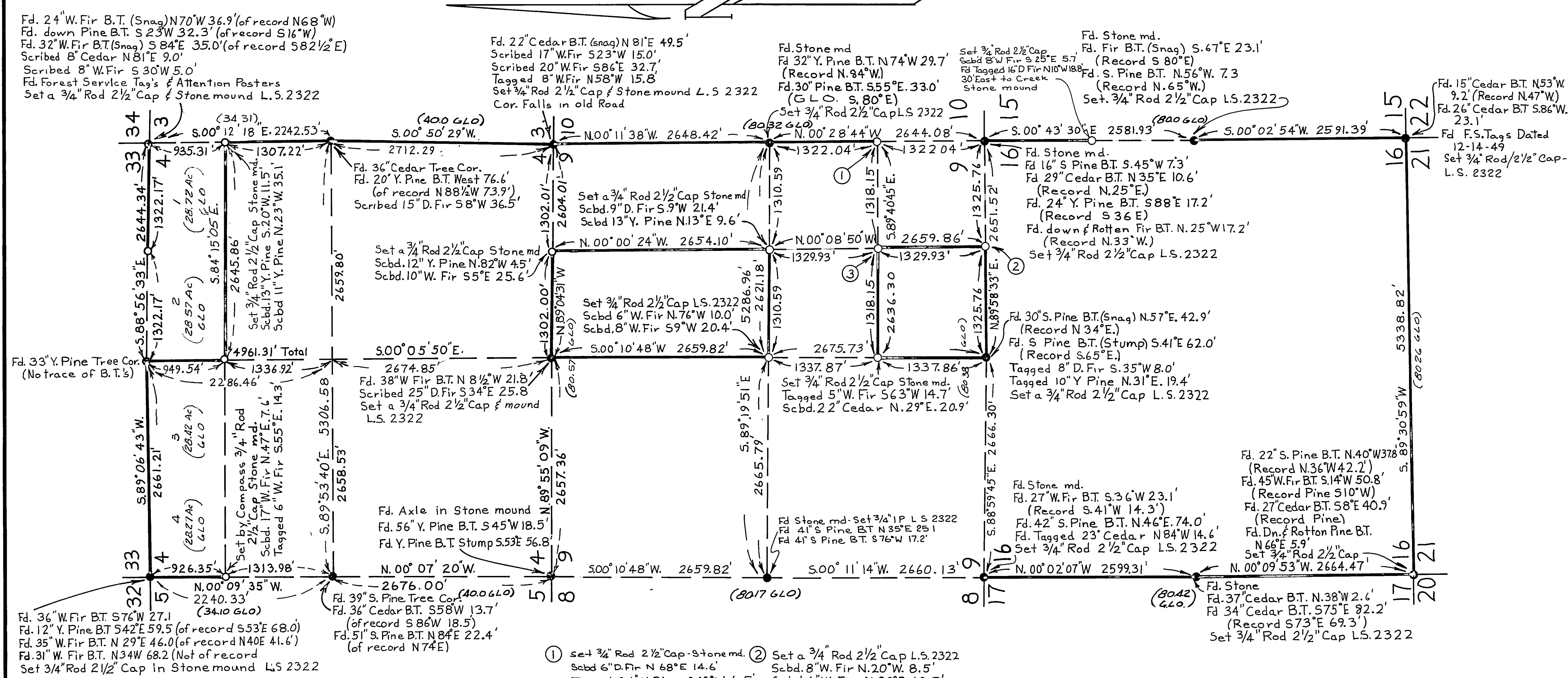


Basis of Bearings: SOLAR OBSERVATION



Fd. 24" W. Fir B.T. (Snag) N70°W 36.9' (of record N68°W)
 Fd. down Pine B.T. S 23°W 32.3' (of record S16°W)
 Fd. 32" W. Fir B.T. (Snag) S 84°E 35.0' (of record S 82 1/2° E)
 Scribed 8" W. Fir S 81°E 9.0'
 Scribed 8" W. Fir S 30°W 5.0'
 Fd. Forest Service Tag's & Attention Posters
 Set a 3/4" Rod 2 1/2" Cap & Stone mound L.S. 2322

Fd. 22" Cedar B.T. (snag) N 81°E 49.5'
 Scribed 17" W. Fir S 23°W 15.0'
 Scribed 20" W. Fir S 86°E 32.7'
 Tagged 8" W. Fir N 58°W 15.8'
 Set 3/4" Rod 2 1/2" Cap & Stone mound L.S. 2322
 Cor. Falls in old Road

Fd. Stone md.
 Fd. 32" Y. Pine B.T. N 74°W 29.7'
 (Record N. 84°W)
 Fd. 30" Pine B.T. S 55°E 33.0'
 (G.L.O. S. 80°E)
 Set 3/4" Rod 2 1/2" Cap L.S. 2322
 Fd. Stone md.
 Fd. Fir B.T. (Snag) S. 67°E 23.1'
 (Record S 80°E)
 Fd. S. Pine B.T. N. 56°W. 7.3
 (Record N. 65°W.)
 Set 3/4" Rod 2 1/2" Cap L.S. 2322

Fd. 15" Cedar B.T. N 53°W
 9.2' (Record N. 47°W)
 Fd. 26" Cedar B.T. S 86°W
 23.1'
 Fd. F.S. Tags Dated
 12-14-49
 Set 3/4" Rod 2 1/2" Cap
 L.S. 2322

Fd. 33" Y. Pine Tree Cor.
 (No trace of B.T.'s)

Fd. 36" Cedar Tree Cor.
 Fd. 20" Y. Pine B.T. West 76.6'
 (of record N 88 1/2° W 73.9')
 Scribed 15" D. Fir S 8°W 36.5'
 Set a 3/4" Rod 2 1/2" Cap Stone md.
 Scbd. 12" Y. Pine N. 82°W 4.5'
 Scbd. 10" W. Fir S 5°E 25.6'

Fd. Stone md.
 Fd. 16" S Pine B.T. S. 45°W 7.3'
 Fd. 29" Cedar B.T. N 35°E 10.6'
 (Record N. 25°E.)
 Fd. 24" Y. Pine B.T. S 88°E 17.2'
 (Record S 36°E)
 Fd. down & Rotten Fir B.T. N. 25°W 17.2'
 (Record N. 33°W.)
 Set 3/4" Rod 2 1/2" Cap L.S. 2322

Fd. 30" S. Pine B.T. (Snag) N. 57°E. 42.9'
 (Record N 34°E.)
 Fd. S Pine B.T. (Stump) S. 41°E 62.0'
 (Record S. 65°E.)
 Tagged 8" D. Fir S. 35°W 8.0'
 Tagged 10" Y Pine N. 31°E. 19.4'
 Set a 3/4" Rod 2 1/2" Cap L.S. 2322

Fd. 36" W. Fir B.T. S 76°W 27.1'
 Fd. 12" Y. Pine B.T. S 42°E 59.5' (of record S 53°E 68.0')
 Fd. 35" W. Fir B.T. N 29°E 46.0' (of record N 40°E 41.6')
 Fd. 31" W. Fir B.T. N 34°W 68.2' (Not of record)
 Set 3/4" Rod 2 1/2" Cap in Stone mound L.S. 2322

Fd. 39" S. Pine Tree Cor.
 Fd. 36" Cedar B.T. S 58°W 13.7'
 (of record S 86°W 18.5')
 Fd. 51" S. Pine B.T. N 84°E 22.4'
 (of record N 74°E)

Fd. Stone md. Set 3/4" 1" P L.S. 2322
 Fd. 41" S Pine B.T. N 35°E 25.1'
 Fd. 41" S Pine B.T. S 76°W 17.2'

Fd. Stone
 Fd. 37" Cedar B.T. N. 38°W 2.6'
 Fd. 34" Cedar B.T. S 75°E 32.2'
 (Record S 73°E 69.3')
 Set 3/4" Rod 2 1/2" Cap L.S. 2322

- ① Set 3/4" Rod 2 1/2" Cap - Stone md.
 Scbd. 6" D. Fir N 68°E 14.6'
 Tagged 24" Y Pine S 48°W 6.5'
- ② Set a 3/4" Rod 2 1/2" Cap L.S. 2322
 Scbd. 8" W. Fir N. 20°W. 8.5'
 Scbd. 6" W. Fir N. 80°E. 10.5'
 Stone mound
- ③ Set a 3/4" Rod 2 1/2" Cap L.S. 2322
 Tagged 6" Y. Pine N. 35°W. 2.0'
 Scbd. 10" W. Fir N. 58°E 8.5'

RECORDER'S CERTIFICATE
 Filed this 7th day of March 1975 at 8:45 AM
 in Book 4 of Record of Surveys at Page 79 at the
 request of COUNTY ENGINEER
 Fee: \$9.00 County Recorder: Dorothy Mae Marley
 Deputy: Dena S. Brown

COUNTY SURVEYORS CERTIFICATE
 This map has been examined this 7th day
 of March 1975, for conformance with the
 requirements of the Land Surveyor's Act.
 County Surveyor: Jay D. Fite
 Deputy: _____

SURVEYOR'S CERTIFICATE
 This map correctly represents a survey made by
 me or under my direction in conformance with the
 requirements of the Land Surveyor's Act in June *
 1972 at the request of William Beaty.
 Loren J Sargent, L.S. 2322: Loren J Sargent

* WORK BEGAN IN 1972 & WAS FINISHED IN
 NOV. 1974.

A Record of Survey for
Brooks Walker et al in
 Sections 2, 4, 9, 10, 14, 15, 8 & 16
 T. 27N. R. 10E. M.D.M. in the
 unincorporated territory of PLUMAS
 COUNTY, CALIFORNIA.

MAP PREPARED
 1-8-75
 Loren J. Sargent
 Sheet 1 of 3 Sheets
 Scale: 1" = 800'
 L.S. 2322

4/13/79