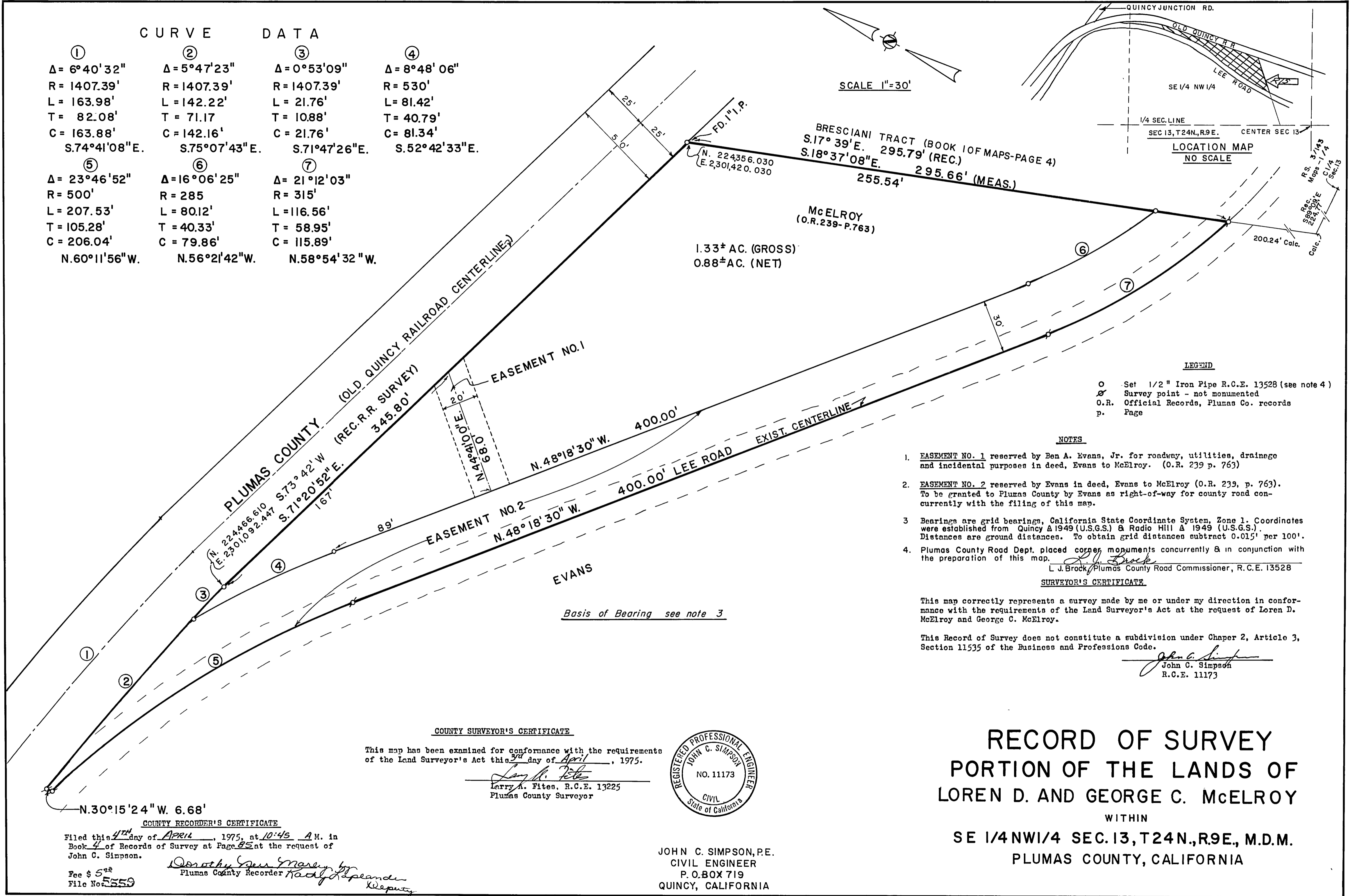
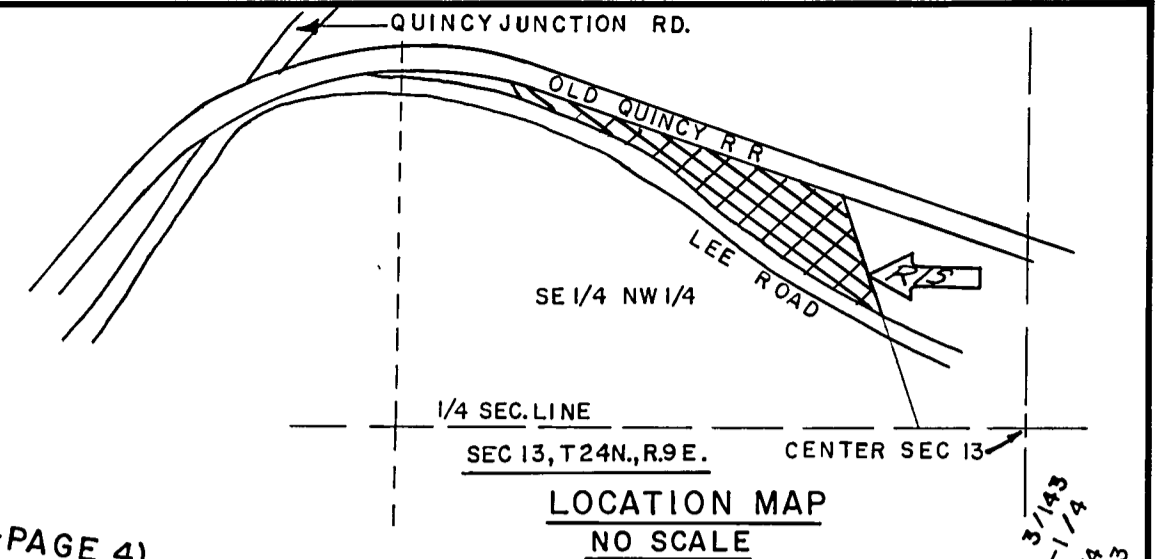


CURVE DATA

① Δ = 6°40'32" R = 1407.39' L = 163.98' T = 82.08' C = 163.88' S.74°41'08"E.	② Δ = 5°47'23" R = 1407.39' L = 142.22' T = 71.17' C = 142.16' S.75°07'43"E.	③ Δ = 0°53'09" R = 1407.39' L = 21.76' T = 10.88' C = 21.76' S.71°47'26"E.	④ Δ = 8°48'06" R = 530' L = 81.42' T = 40.79' C = 81.34' S.52°42'33"E.
⑤ Δ = 23°46'52" R = 500' L = 207.53' T = 105.28' C = 206.04' N.60°11'56"W.	⑥ Δ = 16°06'25" R = 285' L = 80.12' T = 40.33' C = 79.86' N.56°21'42"W.	⑦ Δ = 21°12'03" R = 315' L = 116.56' T = 58.95' C = 115.89' N.58°54'32"W.	

SCALE 1"=30'



N. 224356.030
E. 2301420.030

BRESCIANI TRACT (BOOK 10 OF MAPS-PAGE 4)
S.17°39'E. 295.79' (REC.)
S.18°37'08"E. 295.66' (MEAS.)

McELROY
(O.R. 239-P.763)

1.33± AC. (GROSS)
0.88± AC. (NET)

LEGEND

- Set 1/2" Iron Pipe R.C.E. 13528 (see note 4)
- ⊗ Survey point - not monumented
- O.R. Official Records, Plumas Co. records
- p. Page

NOTES

1. EASEMENT NO. 1 reserved by Ben A. Evans, Jr. for roadway, utilities, drainage and incidental purposes in deed, Evans to McElroy. (O.R. 239 p. 763)
2. EASEMENT NO. 2 reserved by Evans in deed, Evans to McElroy (O.R. 239, p. 763). To be granted to Plumas County by Evans as right-of-way for county road concurrently with the filing of this map.
3. Bearings are grid bearings, California State Coordinate System, Zone 1. Coordinates were established from Quincy A 1949 (U.S.G.S.) & Radio Hill A 1949 (U.S.G.S.). Distances are ground distances. To obtain grid distances subtract 0.015' per 100'.
4. Plumas County Road Dept. placed corner monuments concurrently & in conjunction with the preparation of this map.

L. J. Brock, Plumas County Road Commissioner, R.C.E. 13528
SURVEYOR'S CERTIFICATE

This map correctly represents a survey made by me or under my direction in conformance with the requirements of the Land Surveyor's Act at the request of Loren D. McElroy and George C. McElroy.

This Record of Survey does not constitute a subdivision under Chapter 2, Article 3, Section 11535 of the Business and Professions Code.

John C. Simpson
John C. Simpson
R.C.E. 11173

COUNTY SURVEYOR'S CERTIFICATE

This map has been examined for conformance with the requirements of the Land Surveyor's Act this 3rd day of April, 1975.

Larry A. Fites, R.C.E. 13225
Plumas County Surveyor



JOHN C. SIMPSON, P.E.
CIVIL ENGINEER
P. O. BOX 719
QUINCY, CALIFORNIA

COUNTY RECORDER'S CERTIFICATE

Filed this 4th day of April, 1975, at 10:45 A.M. in Book 4 of Records of Survey at Page 85 at the request of John C. Simpson.

Fee \$ 5.00
File No. 5559

Dorothy Ann Mason, by
Plumas County Recorder
Nadya A. Splander, Deputy

RECORD OF SURVEY
PORTION OF THE LANDS OF
LOREN D. AND GEORGE C. McELROY
WITHIN
SE 1/4 NW 1/4 SEC. 13, T24N., R9E., M.D.M.
PLUMAS COUNTY, CALIFORNIA