

LEGEND

- Set 1/2" Iron pipe tagged RCE 13528
- ◇ Section corner as described
- ◇ 1/4 Section corner as described
- ◇ 1/16 Section corner as described
- Found monument as described
- pro Projecting
- p.c. Portland cement concrete

CERTIFICATES

SURVEYOR'S CERTIFICATE
 This map correctly represents a survey made by me or under my direction in conformance with the requirements of the Land Surveyors Act.

L. J. Brock
 L. J. Brock, R.C.E. 13528
 Plumas County Road Commissioner

RECORDER'S CERTIFICATE
 Filed this 19th day of May 1975, at 9:30 A.M. in Book 4 of Record of Surveys at Page 86 at the request of the Plumas County Road Department

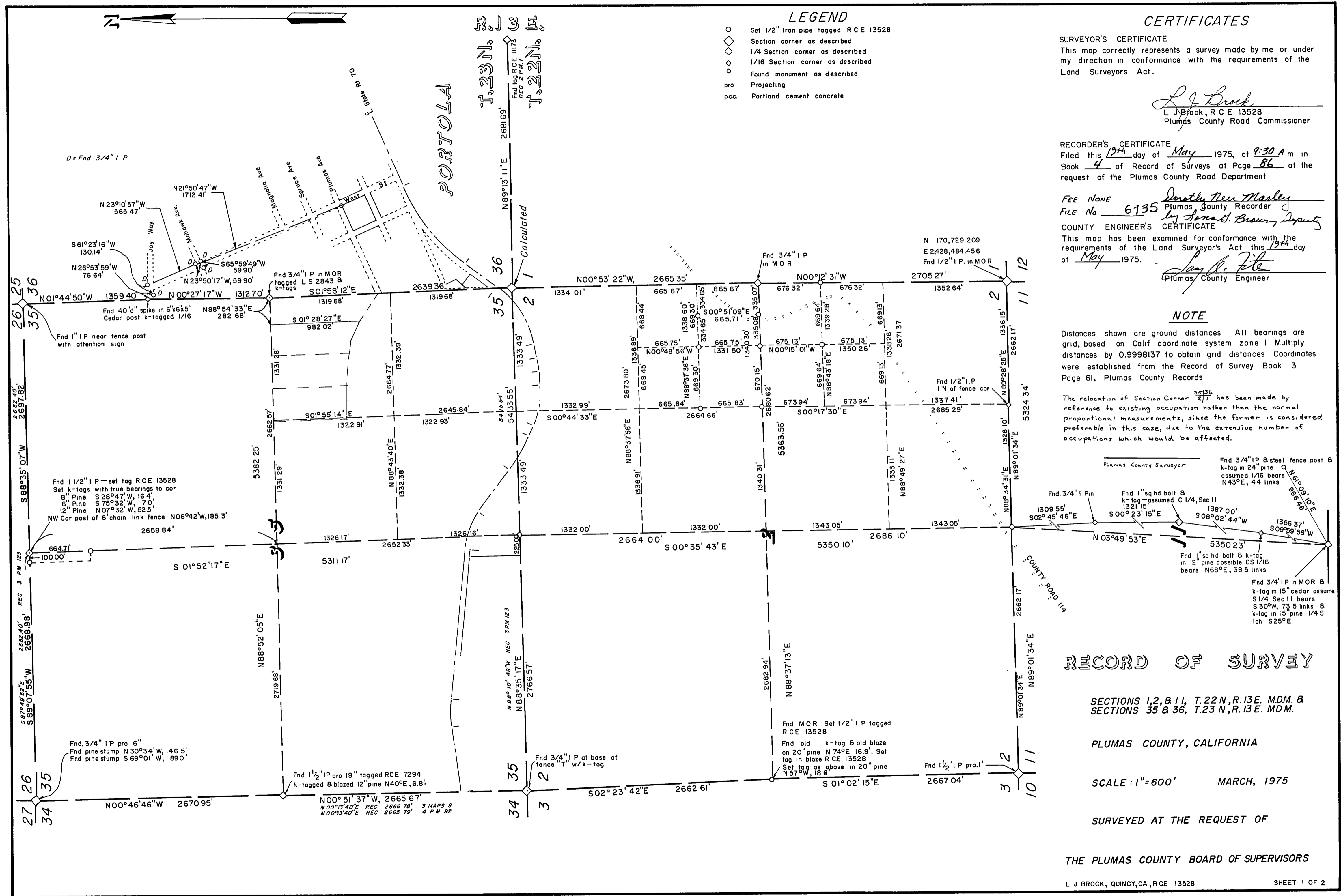
FEE NONE
 FILE No 6135
 COUNTY ENGINEER'S CERTIFICATE

This map has been examined for conformance with the requirements of the Land Surveyor's Act this 19th day of May 1975.
L. J. Brock
 Plumas County Engineer

NOTE

Distances shown are ground distances. All bearings are grid, based on Calif coordinate system zone 1. Multiply distances by 0.9998137 to obtain grid distances. Coordinates were established from the Record of Survey Book 3 Page 61, Plumas County Records.

The relocation of Section Corner 211 has been made by reference to existing occupation rather than the normal (proportional) measurements, since the former is considered preferable in this case, due to the extensive number of occupations which would be affected.



RECORD OF SURVEY

SECTIONS 12, 11, T.22 N., R.13 E. M.D.M. &
 SECTIONS 35 & 36, T.22 N., R.13 E. M.D.M.

PLUMAS COUNTY, CALIFORNIA

SCALE: 1"=600' MARCH, 1975

SURVEYED AT THE REQUEST OF

THE PLUMAS COUNTY BOARD OF SUPERVISORS