

**LEGEND**

- Section Corners, & 1/4 Corners, found as noted
- Computed corners, nothing set
- Set 1/2" Steel Pin with plastic cap stamped R.C.E. 11173
- Fd. Found
- Rec. Record
- Meas. Measured
- I.P. Iron Pipe
- P.M. Parcel Map
- R.C.E. Registered Civil Engineer
- I.P. & T. Iron Pipe and Tag

**NOTES**

Basis of Bearings and Coordinates of this map is derived from Quincy Triangulation Station N. 223672.61 - E. 2.293761.78, and Radio Hill Triangulation Station N. 223005.19, E. 2300677.10

Record from G.L.O. Township Plan, unless as noted.

**COUNTY SURVEYOR CERTIFICATE**

This map has been examined for conformance with the requirements of the Land Surveyor's Act this 21<sup>st</sup> day of June, 1976.

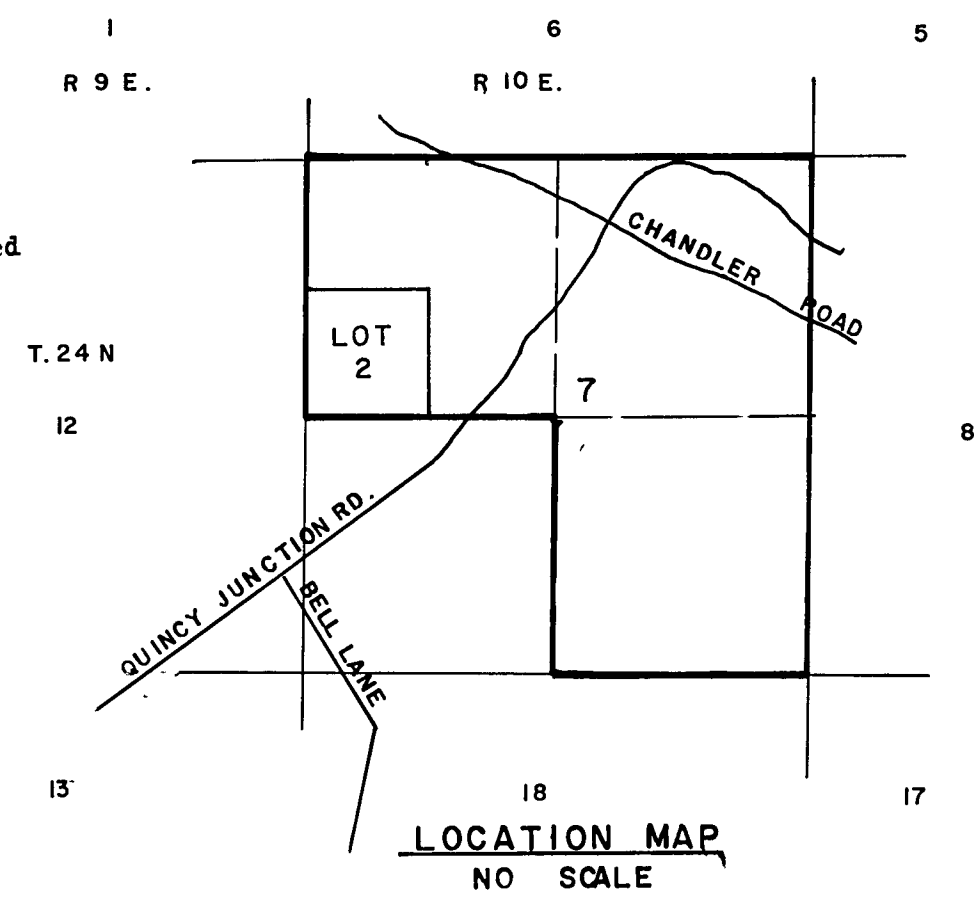
*Larry A. Fites*  
 Larry A. Fites, R.C.E. 13225  
 Plumas County Surveyor

**SURVEYOR'S CERTIFICATE**

This map correctly represents a survey made by me or under my direction in conformance with the requirements of the Land Surveyor's Act at the request of U. S. Department of the Interior, Bureau of Indian Affairs.

This Record of Survey does not constitute a subdivision under Chapter 2, Article 3, Section 11535 of the Business and Professions Code

*John C. Simpson*  
 John C. Simpson, R.C.E. 11173



**RECORDER'S CERTIFICATE**

Filed this 21<sup>st</sup> day of June, 1976, at 11:15 A.M. in Book 4 of Records of Survey, at page 100 at the request of John C. Simpson.

*Dorothy Neer Marley*  
 Dorothy Neer Marley  
 Plumas County Recorder

Fee \$5.00  
 File No. 6830

**NOTE**

Distances shown are ground distances. All bearing are grid bearings, California Coordinate System, Zone 1. Multiply ground distances by 0.9998497 to obtain grid distances.

JOHN C. SIMPSON, P.E.  
 CIVIL ENGINEER  
 P. O. BOX 719  
 QUINCY, CALIFORNIA

**RECORD OF SURVEY  
 RETRACEMENT AND SUBDIVISION  
 PORTION OF SEC. 7, T.24N., R.10E., M.D.M.  
 PLUMAS COUNTY, CALIFORNIA**

FOR  
 U.S. DEPARTMENT OF THE INTERIOR,  
 BUREAU OF INDIAN AFFAIRS