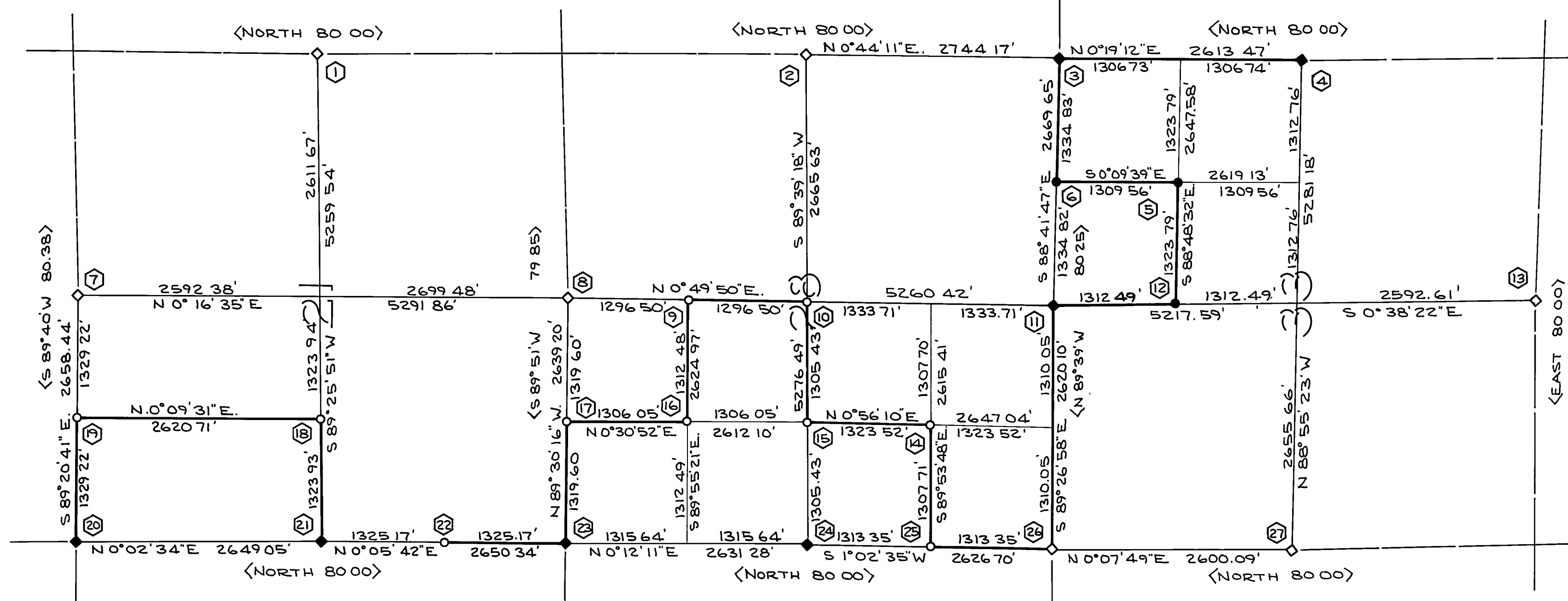


BASIS OF BEARINGS: SOLAR OBSERVATION @ 1/4 21/28 (JUNE 21, 1955)



LEGEND

- ◇ INDICATES: G L O CORNERS FOUND BY L S 2322 IN 1955 AS NOTED.
 - INDICATES: CORNERS SET BY L S. 2322 IN 1955 AS NOTED.
 - ◆ INDICATES: G L O CORNERS FOUND BY L S 2322 IN 1955 AS NOTED, SINCE REMONUMENTED BY B L M
 - INDICATES: CORNERS SET BY L S 2322 IN 1955, FOUND ON THIS RETRACEMENT AS NOTED.
 - <> EMBRACES: RECORD G L O DATA.
- SCALE: 1" = 1000'

1. FOUND MARKED STONE-STONE MOUND FOUND 12" PINE BT S 50°E. 36.3'
2. FOUND STONE MOUND SET 3/4" I P-L S 2322 FOUND 30" CEDAR BT N 88°E. 13.9' FOUND 20" PINE BT. S 85°W. 39.6'
3. FOUND 26" CEDAR BT. S 10°E. 37.0' SET 3/4" I P. L S 2322 FALLS 20' WEST OF ROAD. SCRIBED 34" CEDAR N.60°E. 80.1' NOTE: THIS CORNER DESTROYED BY LIGHTS CR FIRE IN 1959. IT WAS SINCE REMONUMENTED BY B L M.
4. CORNER WAS DESTROYED BY MINING FOUND 24" PINE BT (DOWN) S.44 1/2°E. 38.3' FOUND REMAINS OF PINE BT TO N.W. SCRIBED 16" FIR S 6°E. 4.5' SET 1/4" I P L S 2322 IN OLD DITCH
5. FOUND 3/4" I P-N^o MELTED BY FIRE (SET BY L S 2322 IN 1955) TAGGED PIPE L S 3621 FOUND TREES SCRIBED BY L S. 2322 14" FIR (DEAD) S 46°W. 10.0' 10" FIR (DEAD) N 8°W. 14.4'
6. CORNER SET BY L S 2322 IN 1955 DESTROYED BY FIRE FIGHTING RESET CORNER FROM TREES SCRIBED BY L S 2322 IN 1955. 6" CEDAR (DEAD) N 8°W. 12.2' 8" FIR (DEAD) S 80°W. 19.4'
7. FOUND 24" FIR TREE CORNER (DEAD & DOWN) NO TRACE OF ORIGINAL B.T S SET 3/4" I P-L S 2322 SCRIBED 12" FIR. N.60°E. 17.2'

8. FOUND STONE MOUND-SET 1/4" I P-L S 2322 FOUND 26" CEDAR BT S 75°E. 23.8'
9. SET 3/4" I P-L S. 2322 SCRIBED 18" PINE. N 10°E. 29.5' TAGGED 6" FIR S 17°W. 23.7'
10. SET 1/4" I P L S. 2322 SCRIBED 12" FIR S 80°W. 5.4' 10" FIR N 45°E. 6.9'
11. FOUND MARKED STONE SET 3/4" I P-L S 2322 FOUND 27" PINE BT. N 25°E. 10.5' 16" " " N 34°W. 8.6'
12. FOUND 1/4" I P-L S. 2322 (SET IN 1955) FOUND TREES SCRIBED BY L S 2322: 8" PINE (DEAD) N 86°W. 29.2' 10" PINE (DEAD) S 80°E. 22.3'
13. FOUND 28" FIR BT S 33°30'E. 35.0' SET 3/4" I P L S. 2322 TAGGED 6" FIR WEST 7.1'
14. SET 1/4" I P-L S 2322 SCRIBED 6" FIR S 65°E. 12.0' 8" FIR N 76°W. 16.7' 14" FIR N 1°W. 28.1'
15. SET 1/4" I P-L S 2322 10' SOUTH OF ROAD. TAGGED 16" FIR. N 45°W. 41.9'
16. SET 1/4" I P-L S. 2322 SCRIBED 6" FIR SOUTH 5.7' 8" FIR N 72°W. 9.8'
17. SET 1/4" I P-L S 2322 SCRIBED 14" CEDAR N 61°E. 27.3' 12" PINE N 24°W. 28.0'

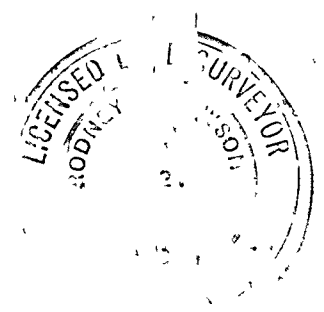
18. SET 3/4" I P-L S. 2322 SCRIBED 20" FIR S 54°E. 13.2' 20" FIR N 61°W. 22.1'
19. SET 1/4" I P-L S 2322 CORNER FALLS IN ROAD.
20. FOUND STONE MOUND-SET 3/4" I P L S 2322 SET 1/4" I P-L S 2322 FOUND 20" FIR BT S 35°E. 79.2' FOUND PINE BT N 61°E. 36.3'
21. FOUND MARKED STONE & STONE MOUND SET 3/4" I P-L S. 2322 FOUND 27" PINE BT N 80°E. 27.7' TAGGED 3" FIR N 8°E. 14.0' 4" FIR EAST 9.3'
22. SET 3/4" I P-L S 2322 SCRIBED 10" FIR S 27°W. 26.7' 8" CEDAR EAST 31.4'
23. FOUND POST IN STONE MOUND SET 3/4" I P-L S 2322 FOUND 28" PINE BT. S 40°E. 13.9' 36" PINE BT (SNAG) S 61°W. 16.1' 36" FIR BT (SNAG) N 30 1/2°E. 30.0' 43" S PINE BT N 16 1/2°W. 39.0'
24. FOUND STONE MOUND-SET 1/4" I P-L S. 2322 FOUND 4.4" PINE BT WEST 7.9' SCRIBED 12" FIR S.74°E. 49.0'
25. SET 1/4" I P-L S 2322 SCRIBED 6" FIR S 63°W. 8.7' 22" CEDAR N 63°E. 26.2'

26. FOUND SCRIBED POST IN STONE MOUND SET 3/4" I P-L S 2322 FOUND 38" PINE BT. S 46°E. 72.3' 27" PINE BT N 6°W. 55.6' 48" FIR BT S 64°W. 22.2' SCRIBED 16" PINE N 24°E. 14.6'
27. FOUND SCRIBED POST (NOT ORIG) IN STONE MOUND SET 3/4" I P-L S. 2322 FOUND 40" FIR BT (SNAG) N 31 1/4°W. 21.8' SCRIBED 20" PINE S 11°W. 21.3'

SURVEYOR'S CERTIFICATE

THIS MAP CORRECTLY REPRESENTS A SURVEY MADE BY ME OR UNDER MY DIRECTION IN CONFORMANCE WITH THE REQUIREMENTS OF THE LAND SURVEYORS ACT IN JULY 1976 AT THE REQUEST OF W.M BEATY & THE U.S FOREST SERVICE

Rodney D Dawson
RODNEY D DAWSON - L.S. 3621



COUNTY SURVEYOR'S CERTIFICATE

THIS MAP HAS BEEN EXAMINED THIS 23RD DAY OF SEPT. 1976 FOR CONFORMANCE WITH THE REQUIREMENTS OF THE LAND SURVEYOR'S ACT.

COUNTY SURVEYOR: *[Signature]*
DEPUTY: *[Signature]*

RECORDER'S CERTIFICATE

FILED THIS 23RD DAY OF SEPT. 1976 AT 11:30 A.M. IN BOOK 4 OF Record of Survey AT PAGE 105 AT THE REQUEST OF County Engineer FEE: \$500

COUNTY RECORDER: *[Signature]*
DEPUTY: *[Signature]*

RECORD OF SURVEY

A RETRACEMENT OF AN UNRECORDED SURVEY AS PREFORMED BY L.S 2322 IN JUNE OF 1955 IN SECTIONS 21, 28 & 33 T.28 N. R. 11 E. M.D.M. IN THE UNINCORPORATED TERRITORY OF PLUMAS COUNTY CALIF. FOR WALTER W. WALKER & THE U.S. FOREST SERVICE AUGUST 1976 SCALE: 1"=1000' RODNEY D DAWSON - LAND SURVEYOR. SHEET 1 OF 1