

SURVEYOR'S CERTIFICATE

THIS MAP CORRECTLY REPRESENTS A SURVEY MADE BY ME OR UNDER MY DIRECTION IN CONFORMANCE WITH THE REQUIREMENTS OF THE LAND SURVEYOR'S ACT AT THE REQUEST OF D. WILSON IN NOVEMBER 1976.

THIS RECORD OF SURVEY DOES NOT CONSTITUTE A SUBDIVISION UNDER CHAPTER 2 ARTICLE 3 SECTION 11535 OF THE BUSINESS AND PROFESSIONS CODE.

Gerald C. Henderson
GERALD C. HENDERSON LS 3297

COUNTY SURVEYOR'S CERTIFICATE

THIS MAP HAS BEEN EXAMINED FOR CONFORMANCE WITH THE REQUIREMENTS OF THE LAND SURVEYOR'S ACT THIS 1st DAY OF December, 1976.

Larry A. Fites
LARRY A. FITES HCE 13225
PLUMAS COUNTY SURVEYOR

RECORDER'S CERTIFICATE

FILED THIS 1st DAY OF December, 1976, AT 8:45 A.M. IN BOOK 4 OF RECORD OF SURVEYS AT PAGE 110, AT THE REQUEST OF GERALD C. HENDERSON.

FEE \$5.00

FILE NO. 4442

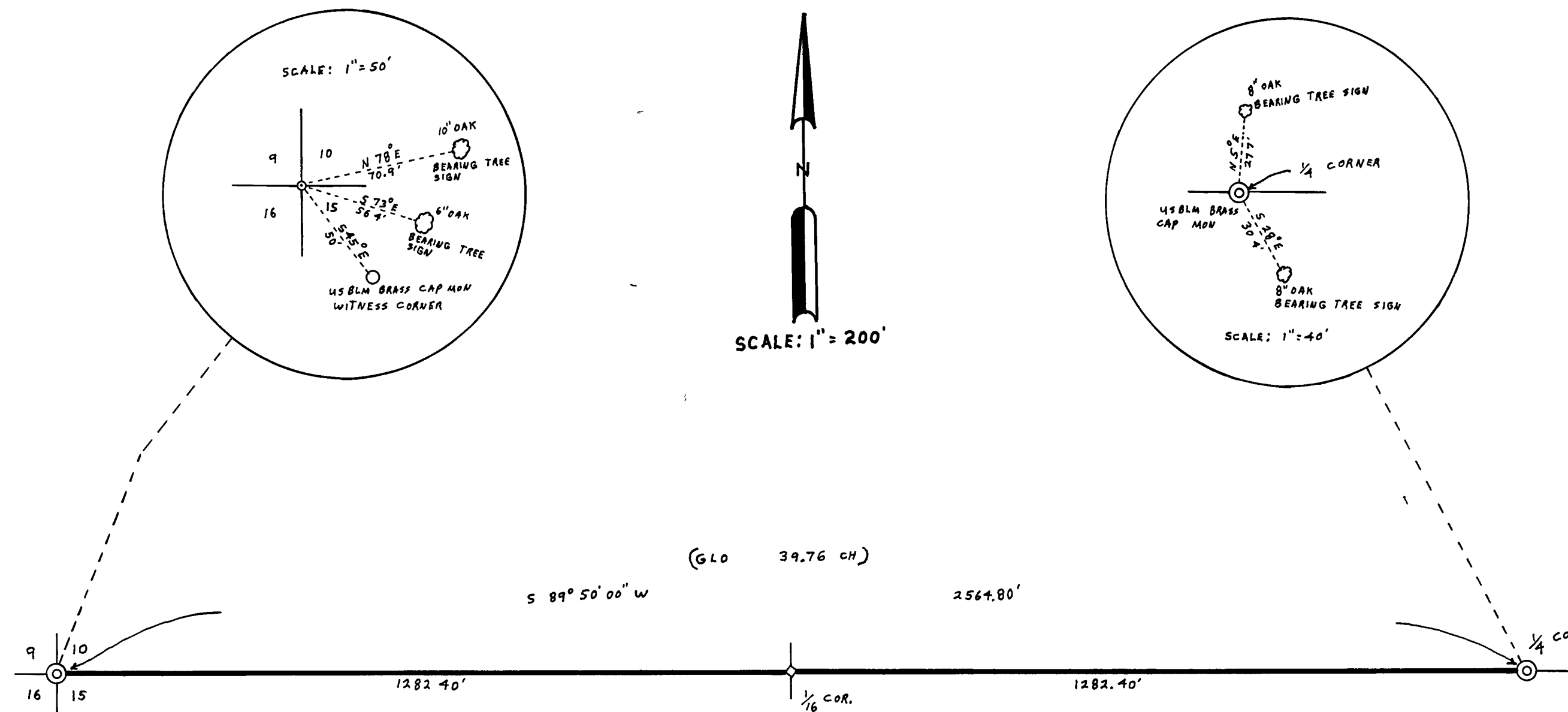
Raynelle Slatten
RAYNELLE SLATTEN
COUNTY RECORDER

by Lora H. Brown

RECORD OF SURVEY

FOR
D. WILSON NOVEMBER 1976
PORTION OF SECTIONS 10 & 15, T. 25N., R. 9E., MM
PLUMAS COUNTY, CALIFORNIA

GERALD C. HENDERSON
LICENSED LAND SURVEYOR
P. O. BOX 13
PORTOLA, CALIFORNIA



NOTE

BASIS OF BEARING IS TAKEN FROM THE ORIGINAL G.L.O. PLAT AND ORIGINAL NOTES ON FILE IN THE U.S.F.S. RECORDS.

LEGEND

SECTION CORNER OR 1/4 CORNER AS SHOWN HEREON
COMPUTED CORNER LOCATION
FOUND POINT AS IDENTIFIED HEREON
SET 1/2" IF TAGGED LS 3297

