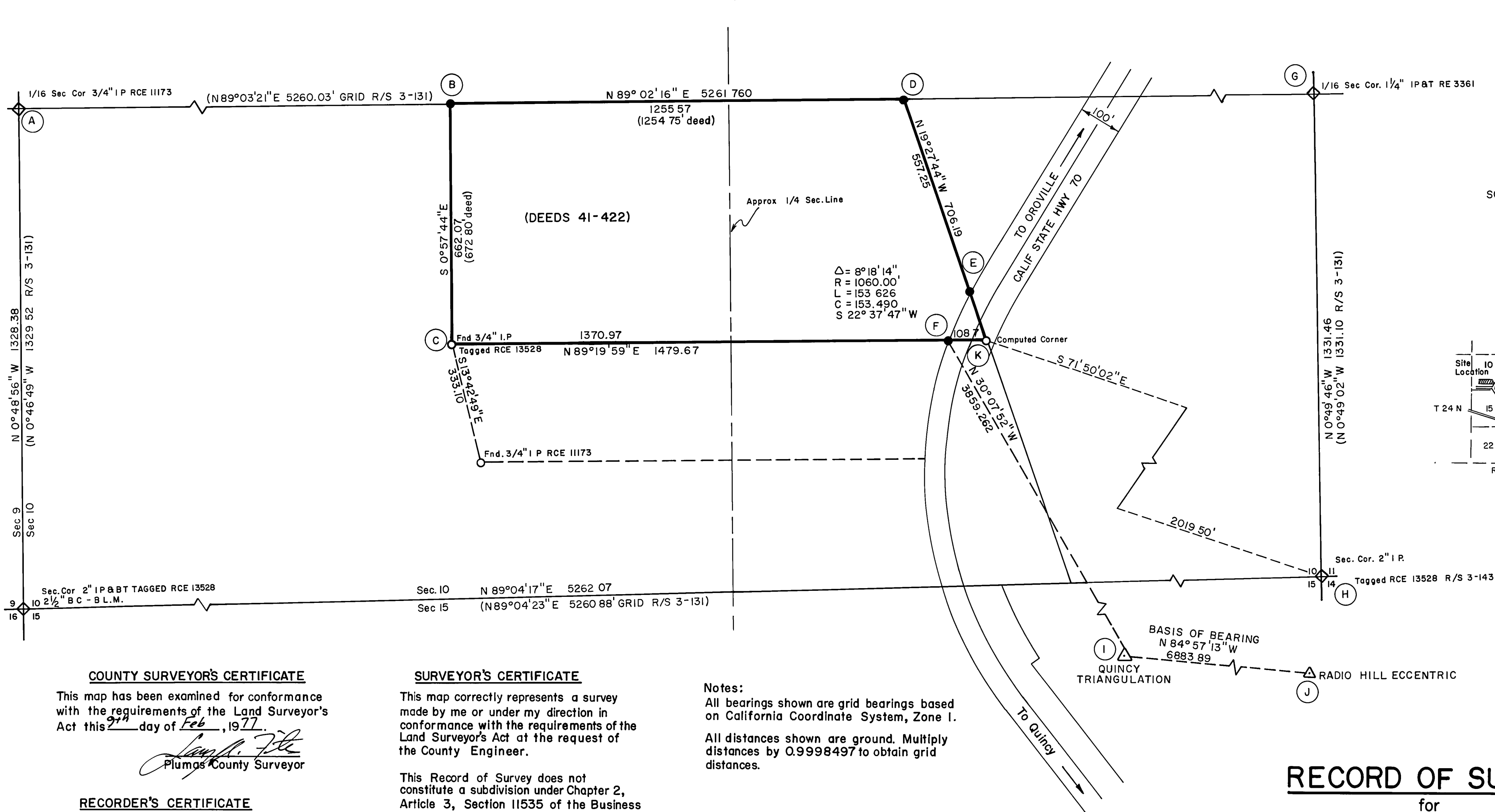


CALIFORNIA COORDINATES

(A) 227,624.92 2,288,572.24	(E) 227,152.08 2,291,883.57	(I) 223,672.61 2,293,761.78
(B) 227,656.33 2,290,442.72	(F) 227,010.41 2,291,824.51	(J) 223,067.08 2,300,618.99
(C) 226,994.45 2,290,453.84	(G) 227,713.26 2,293,832.47	(K) 227,011.67 2,291,933.19
(D) 227,677.41 2,291,697.93	(H) 226,382.14 2,293,851.74	



COUNTY SURVEYOR'S CERTIFICATE

This map has been examined for conformance with the requirements of the Land Surveyor's Act this 9th day of Feb, 1977.

Sam M. Fife
Plumas County Surveyor

RECORDER'S CERTIFICATE

Filed this 9th day of Feb, 1977, at 8:45am, in Book 4 of Record of Survey's at page 115, at the request of COUNTY ENGINEER.

RAYNELLE SLATEN
County Recorder

Mildred Carter
By Deputy

Fee NONE
File No. 8957

SURVEYOR'S CERTIFICATE

This map correctly represents a survey made by me or under my direction in conformance with the requirements of the Land Surveyor's Act at the request of the County Engineer.

This Record of Survey does not constitute a subdivision under Chapter 2, Article 3, Section 11535 of the Business and Professions Code.

L.J. Brock
L.J. Brock RCE 13528
Plumas County Road Commissioner

Notes:

All bearings shown are grid bearings based on California Coordinate System, Zone I.

All distances shown are ground. Multiply distances by 0.9998497 to obtain grid distances.

Legend:

- Set 1/2" IP tagged RCE 13528.
- Monuments as noted
- ⊕ Section Corner as noted
- BC Brass Cap
- BT Bearing Tree

RECORD OF SURVEY

for
PLUMAS COUNTY
PORTION OF SECTION 10, T24N R9E
PLUMAS COUNTY, CALIFORNIA
L.J. BROCK RCE 13528
PLUMAS COUNTY ROAD COMMISSIONER
MAY 1976