

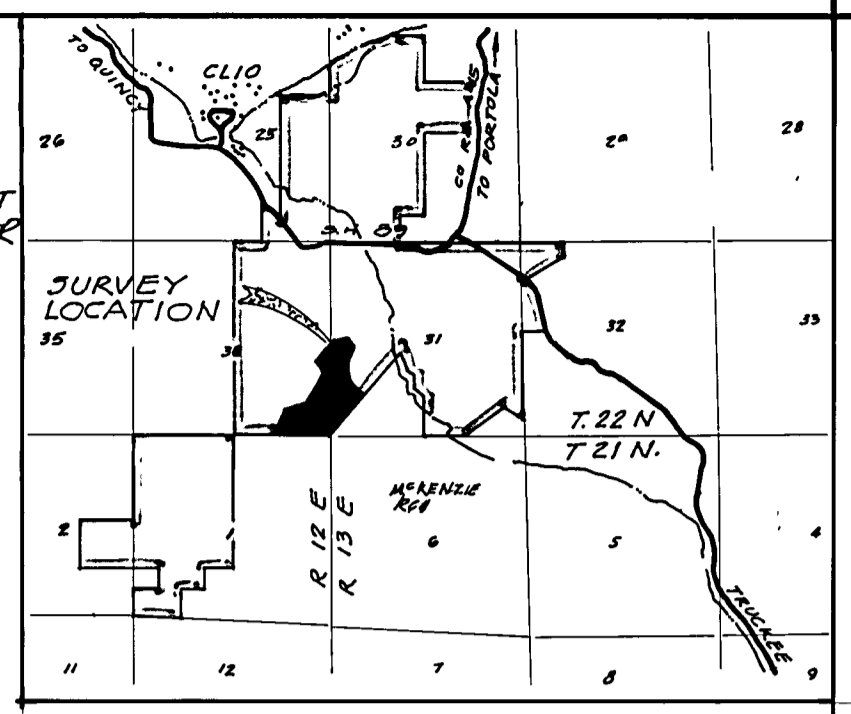
RECORDER'S CERTIFICATE

FILED THIS 30TH DAY OF MARCH, 1977,
AT 2:30 P.M. IN BOOK 4 OF RECORD OF SURVEYS AT
PAGE 117, AT THE REQUEST OF COUNTY ENGINEER

RATNELLE SLATEN
COUNTY RECORDER

BY: Karin Doe
DEPUTY

FEE \$5.00
FILE NO. 15265



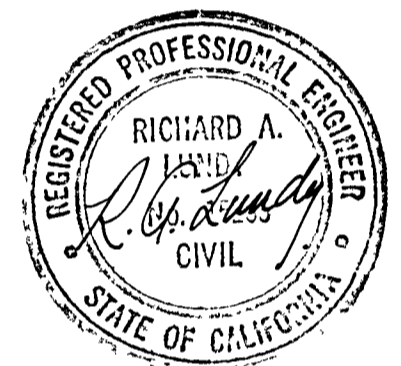
VICINITY MAP
SCALE 1" = 1 MILE

MAP NOTES.

1. DISTANCES SHOWN ARE GROUND DISTANCES MULTIPLY BY 0.9998641 TO CONVERT TO GRID.
2. THE BASIS OF BEARINGS IS THE LINE BETWEEN STATE DIVISION OF HIGHWAYS MONUMENTS 3.07 AND 3.43 GIVEN AS N 81° 08' 02" W. ROTATE BEARINGS 1° 01' 54" CLOCKWISE TO RECORD DEED CALLS

MAP LEGEND

- SET 1/2" REBAR W/ PLASTIC CAP - R.C.E. 15265
- △ FOUND STATE HIGHWAY MONUMENT
- ⊖ POWER POLE TAB INDICATES LINE DIRECTION



SURVEYOR'S CERTIFICATE

THIS MAP CORRECTLY REPRESENTS A SURVEY MADE BY ME OR UNDER MY DIRECTION IN CONFORMANCE WITH THE REQUIREMENTS OF THE LAND SURVEYORS ACT AT THE REQUEST OF FRANK CARMICHAEL IN MARCH, 1977. THIS RECORD OF SURVEY DOES NOT CONSTITUTE A A SUBDIVISION UNDER DIVISION 2 OF TITLE 7, OF THE GOVERNMENT CODE.

SIGNED: Richard A. Lundy
R.C.E. 15265

COUNTY SURVEYOR'S CERTIFICATE

THIS MAP HAS BEEN EXAMINED FOR CONFORMANCE WITH THE REQUIREMENTS OF THE LAND SURVEYORS ACT THIS 29TH DAY OF MARCH, 1977.

SIGNED: Larry A. Fites
LARRY A. FITES R.C.E. 13225
PLUMAS COUNTY SURVEYOR

RECORD OF SURVEY

FOR
HI VALLEY, INCORPORATED

FRANK CARMICHAEL, PRES.
A PORTION OF THE SE 1/4, SECTION 36, &
SW 1/4, SECTION 31, T. 22 N. R. 12 & 13 E. MDM
MOHAWK VALLEY
PLUMAS COUNTY, CALIFORNIA

LUNDY ENGINEERING
P.O. BOX 308
GRAEAGLE, CALIF.
R.C.E. 15265

MARCH, 1977