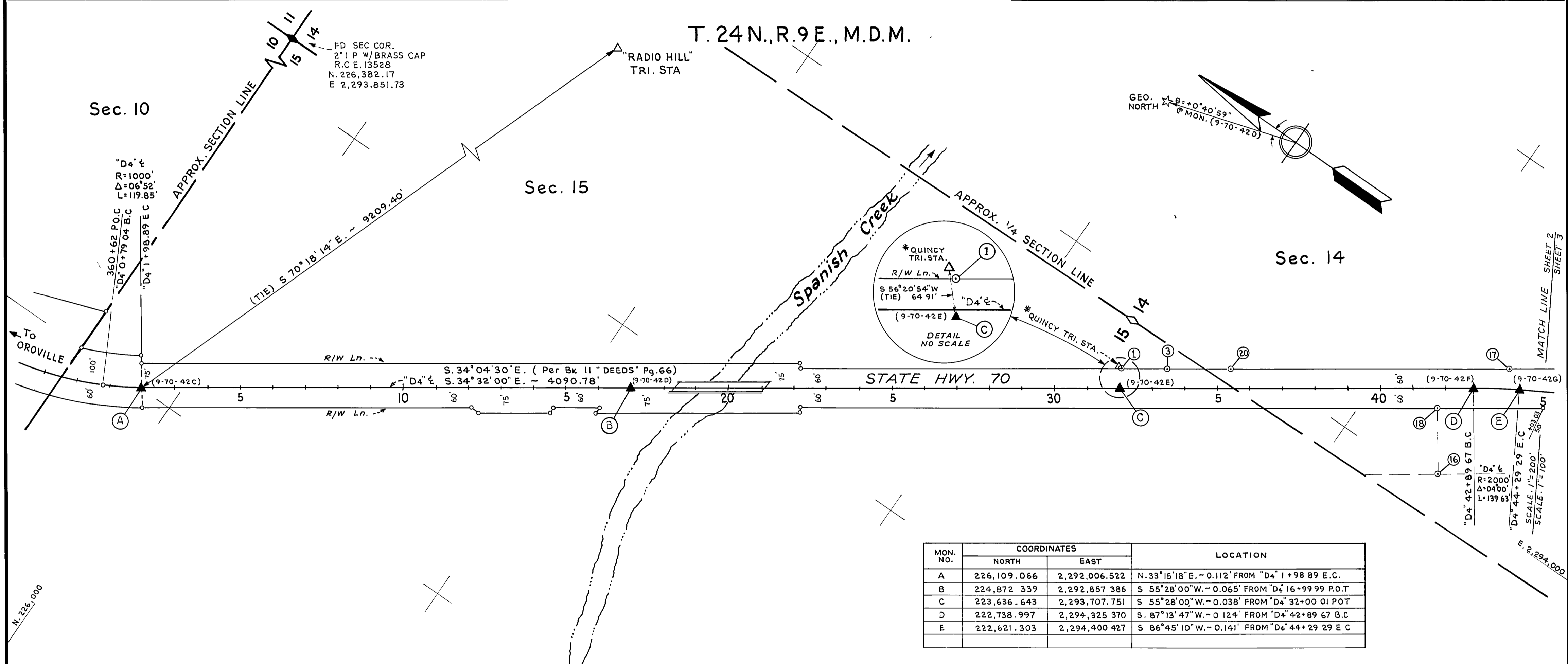


- FOUND POINTS -

SEC	PT	COORDINATES		DESCRIPTION	RECORDED AT			SEC	PT	COORDINATES		DESCRIPTION	RECORDED AT		
		NORTH	EAST		BK	OF	PG			NORTH	EAST		BK	OF	PG
15	*	223,672.610	2,293,761.780	QUINCY TRI STA *											
15	1	223,667.334	2,293,759.422	1 1/4" O.D.I.P.	1	PM	12								
15	3	223,548.102	2,293,841.546	1 1/8" O.D.I.P. W/TAG R.C.E. 7294	1	PM	12								
14	16	222,678.595	2,294,041.761	1/2" RE-BAR W/ PLASTIC CAP R.C.E. III73											
14	17	222,688.906	2,294,433.298	1" O.D.I.P.											
14	18	222,796.484	2,294,213.077	1/2" RE-BAR W/ PLASTIC CAP R.C.E. III73											
14	20	223,386.454	2,293,952.864	1" O.D.I.P. W/TAG R.C.E. 7294											

- LEGEND -

- ▲ SURVEY MONUMENT, SET STANDARD BRASS DISK IN CONCRETE, STAMPED AS NOTED.
- PROPERTY MONUMENT FOUND AND REMOVED.
- ◆ SECTION OR FRACTIONAL CORNER, FOUND
- ◇ SECTION OR FRACTIONAL CORNER, NOT LOCATED.
- MONUMENT, AS NOTED.
- NO MONUMENT SET.
- ⊙ PROPERTY MONUMENT, FOUND.

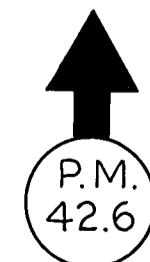


MON. NO.	COORDINATES		LOCATION
	NORTH	EAST	
A	226,109.066	2,292,006.522	N. 33° 15' 18" E. - 0.112' FROM "D4" 1+98.89 E.C.
B	224,872.339	2,292,857.386	S. 55° 28' 00" W. - 0.065' FROM "D4" 16+99.99 P.O.T
C	223,636.643	2,293,707.751	S. 55° 28' 00" W. - 0.038' FROM "D4" 32+00.01 POT
D	222,738.997	2,294,325.370	S. 87° 13' 47" W. - 0.124' FROM "D4" 42+89.67 B.C
E	222,621.303	2,294,400.427	S. 86° 45' 10" W. - 0.141' FROM "D4" 44+29.29 E.C

SURVEYOR'S CERTIFICATE

THIS MAP CORRECTLY REPRESENTS A SURVEY MADE BY ME OR UNDER MY DIRECTION IN CONFORMANCE WITH THE REQUIREMENTS OF THE LAND SURVEYOR'S ACT AT THE REQUEST OF DEPARTMENT OF TRANSPORTATION IN March, 1977.

George E. Perry
 GEORGE E. PERRY R.C.E. 10148
 CHIEF, ENGINEERING SERVICES



* BASED ON AUGUST, 1964 ADJUSTMENT.

EXCEPTING THOSE SHOWN OTHERWISE, ALL DISTANCES AND BEARINGS ARE GRID, BASED ON CALIFORNIA COORDINATE SYSTEM, ZONE I. TO OBTAIN GROUND LEVEL DISTANCES, MULTIPLY GRID DISTANCES SHOWN BY 1.000150

GRID WAS ESTABLISHED FROM U.S.C. & G.S. TRIANGULATION STATION

* "QUINCY"	N. 223,672.61	* "RADIO HILL"	N. 223,005.19
	E. 2,293,761.78		E. 2,300,677.10
N. _____		N. _____	
E. _____		E. _____	

SUPPLEMENTARY INFORMATION MAY BE OBTAINED FROM THE DISTRICT OFFICE, SURVEY DEPARTMENT OR RIGHT OF WAY ENGINEERING DEPT., 1657 RIVERSIDE DR., REDDING, CALIFORNIA

STATE OF CALIFORNIA
 BUSINESS AND TRANSPORTATION AGENCY
 DEPARTMENT OF TRANSPORTATION
 DISTRICT 02

**RECORD OF SURVEY
 OF MONUMENTATION
 IN PLUMAS COUNTY
 ON ROUTE 70
 PM. 42.1 TO PM. 47.0**

PREPARED BY BOB BREUNING, CHKD. BY RON HALL
 DRAWN BY W.J. ZIEGLER DATE MARCH, 1977
 SCALE: 1" = 200' SHEET 2 OF 8