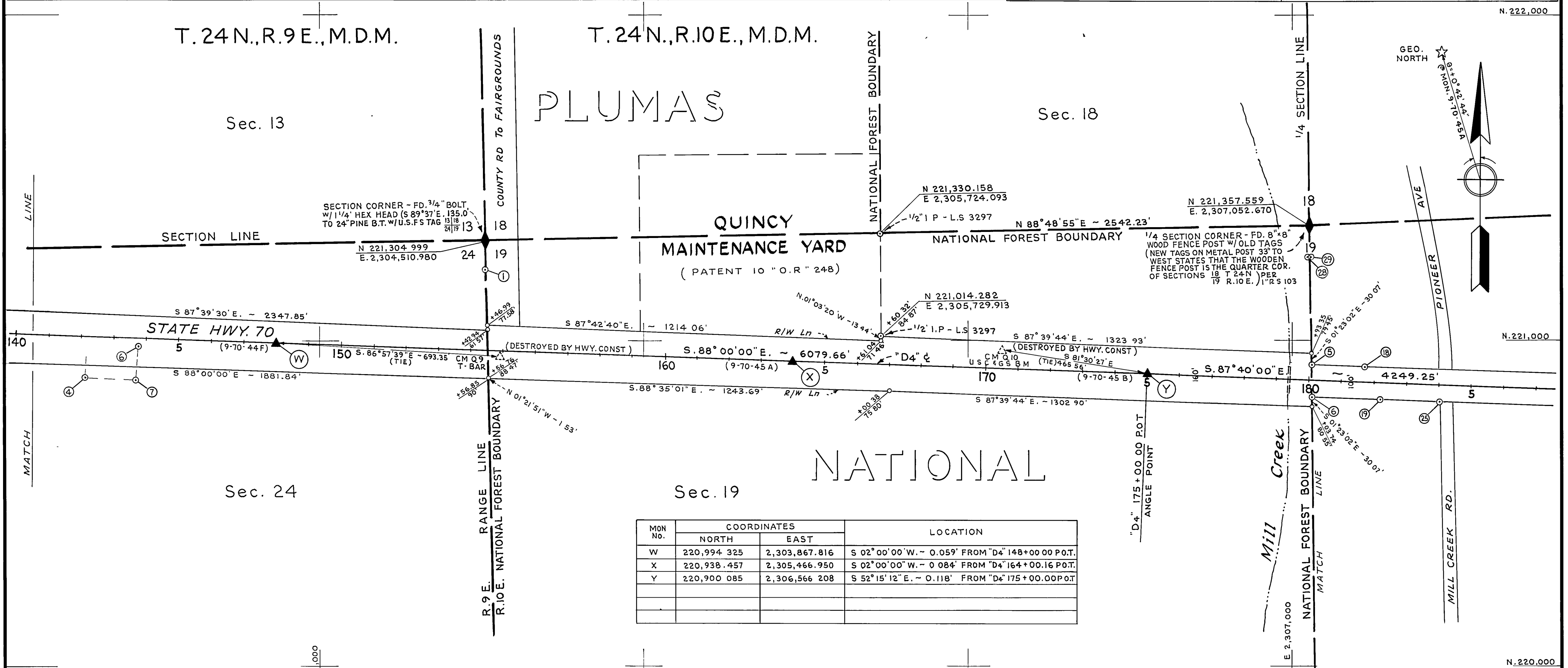


- FOUND POINTS -

SEC	PT	COORDINATES		DESCRIPTION	RECORDED AT			SEC	PT	COORDINATES		DESCRIPTION	RECORDED AT		
		NORTH	EAST		BK	OF	PG			BK	OF		PG		
19	1	221,220.862	2,304,512.031	7/8" O.D.I.P. W/TAG JOHN C. SIMPSON R.C.E. 11173				19	25	220,813.005	2,307,464.791	1/2" SQ PIN W/1" ROUNDED TOP			
24	4	220,884.289	2,303,280.707	1 1/8" O.D.I.P. W/TAG L.S. 2587				19	28	221,257.836	2,307,052.588	3/4" IRON PIN IN CONC.			
24	6	220,977.579	2,303,443.081	1" O.D.I.P. W/TAG L.S. 2587				19	29	221,257.691	2,307,054.532	1 3/8" O.D.I.P.			
24	7	220,877.767	2,303,438.916	1 1/8" O.D.I.P. W/TAG L.S. 2587											
19	5	220,929.049	2,307,065.868	1 1/8" O.D.I.P.											
19	6	220,829.115	2,307,068.205	1 1/2" AXLE											
19	18	220,922.579	2,307,229.076	1 3/4" O.D.I.P.											
19	19	220,820.959	2,307,274.299	1 5/8" SQUARE IRON PIN											

- LEGEND -

- ▲ SURVEY MONUMENT, SET STANDARD BRASS DISK IN CONCRETE, STAMPED AS NOTED.
- PROPERTY MONUMENT FOUND AND REMOVED.
- ◆ SECTION OR FRACTIONAL CORNER, FOUND.
- ◇ SECTION OR FRACTIONAL CORNER, NOT LOCATED.
- MONUMENT, AS NOTED.
- NO MONUMENT SET.
- ⊙ PROPERTY MONUMENT, FOUND.



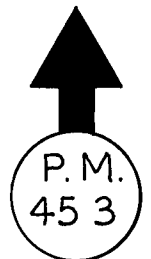
SURVEYOR'S CERTIFICATE

THIS MAP CORRECTLY REPRESENTS A SURVEY MADE BY ME OR UNDER MY DIRECTION IN CONFORMANCE WITH THE REQUIREMENTS OF THE LAND SURVEYOR'S ACT AT THE REQUEST OF DEPARTMENT OF TRANSPORTATION IN March -----, 1977

*George E. Perry*  
 GEORGE E. PERRY R.C.E. 10148  
 CHIEF, ENGINEERING SERVICES



SUPPLEMENTARY INFORMATION MAY BE OBTAINED FROM THE DISTRICT OFFICE, SURVEY DEPARTMENT OR RIGHT OF WAY ENGINEERING DEPT, 1657 RIVERSIDE DR, REDDING, CALIFORNIA



FOREST

\* BASED ON AUGUST, 1964 ADJUSTMENT.

EXCEPTING THOSE SHOWN OTHERWISE, ALL DISTANCES AND BEARINGS ARE GRID, BASED ON CALIFORNIA COORDINATE SYSTEM, ZONE I. TO OBTAIN GROUND LEVEL DISTANCES, MULTIPLY GRID DISTANCES SHOWN BY 1.000150

GRID WAS ESTABLISHED FROM U.S.C. & G.S. TRIANGULATION STATION  
 \* "QUINCY" N. 223,672.61     \* "RADIO HILL" N. 223,005.19  
 E. 2,293,761.78     E. 2,300,677.10

N. \_\_\_\_\_     N. \_\_\_\_\_  
 E. \_\_\_\_\_     E. \_\_\_\_\_

STATE OF CALIFORNIA  
 BUSINESS AND TRANSPORTATION AGENCY  
 DEPARTMENT OF TRANSPORTATION  
 DISTRICT 02  
**RECORD OF SURVEY  
 OF MONUMENTATION  
 IN PLUMAS COUNTY  
 ON ROUTE 70  
 PM. 42.1 TO PM. 47.0**

PREPARED BY BOB BREUNING CHKD. BY RON HALL  
 DRAWN BY W. J. ZIEGLER DATE MARCH 1977  
 SCALE: 1" = 200' SHEET 6 OF 8