

	Radius	Δ	Length	Bearing
A	310.00'	8°33'37"	46.32'	
B			100.00'	S 51°16'02"E
C	2000.00'	7°00'19"	244.53'	
D			144.26'	S 44°15'43"E
E	500.00'	41°43'18"	364.09'	
F			103.63'	S 85°59'01"E
G	650.00'	32°43'59"	371.74'	
H			135.02'	S 53°15'02"E
I	100.00'	30°37'31"	374.16'	
J			41.65'	S 83°52'33"E
K	550.00'	31°18'27"	200.53'	
L			53.17'	S 52°34'06"E
M	2000.00'	1°18'15"	45.52'	
N			119.83'	S 60°00'00"E
O	2000.00'	7°52'19"	274.78'	
P			498.88'	S 52°07'41"E
Q	850.00'	27°16'50"	404.72'	
R			247.35'	S 24°50'51"E
S	750.00'	20°36'50"	269.84'	

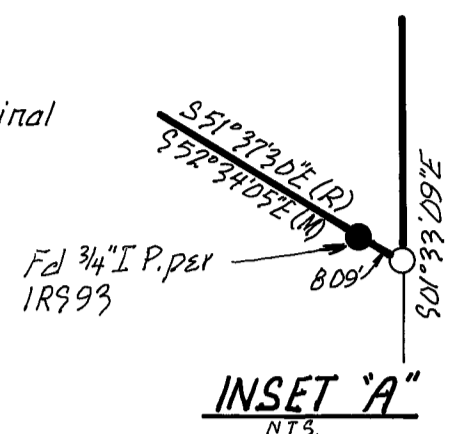
Data for Existing 20' Wide Road (State Highway 89)

Fd U.S.B.L.M Monument  
Brass Cap in Rock Mound  
Fd 20" Pine BT N02°W-33'  
Fd. 7/8" Snag BT S03°W-75'

G.L.D 3990  
N88°16'52"E 2648.64'

29-32  
28-33

Fd U.S.B.L.M Monument  
Brass Cap in Rock Mound  
Fd 20" Pine BT S88°E 90'  
Fd 20" Pine BT N5 3/4°W 39'  
Fd 20" Pine BT S48°W 43' Not  
Fd 19" Pine BT S74°W 63' Original



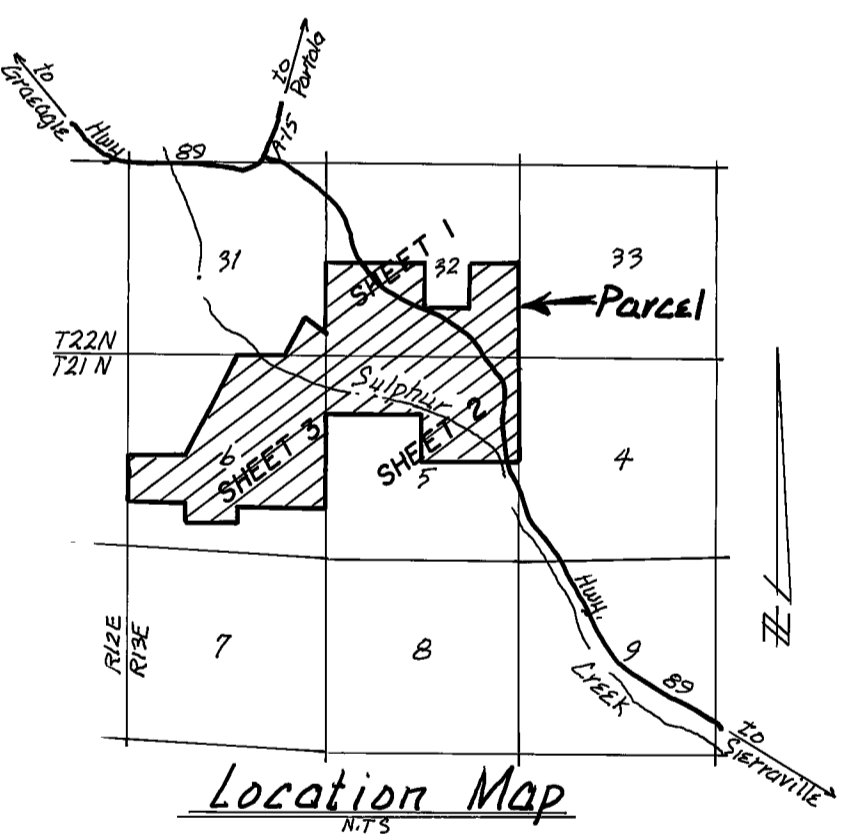
Legend

- Found Point as Noted
- Set 1/2" Rebar & Aluminum Cap L.S. 2843 unless otherwise noted
- State Highway Monument Found T-Bar & Aluminum Cap marked as Noted

Basis of Bearings: The Basis of Bearings of this Record of Survey is the California Coordinate System, Zone 1. The Basis was determined from State Highway Record Coordinates for Control Monuments on State Highway 89

Note: This map amends Record of Survey map filed in Book 5 of Record of Surveys at page 100 and shows the correct subdivision of Sections 5 and 6

Note: All Bearings and Distances shown are Measured unless otherwise noted.  
Public Use of State Highway 89 from Prescriptive Rights  
All distances are ground distances unless otherwise noted  
Grid dist = Ground dist x D.999867



AMENDED RECORD OF SURVEY FOR

CALIFORNIA EASTERN LABORATORIES, INC.

PORTIONS OF SEC. 31 & 32, T22N, R13E, & SECTIONS 5 & 6, T21N, R13E, M.D.B.&M. PLUMAS COUNTY, CALIFORNIA

SURVEYOR'S CERTIFICATE

This map correctly represents a survey made by me or under my direction in conformance with the requirements of the Land Surveyors Act at the request of Hugh White on March, 1972.

*John W Hamby*  
John W Hamby LS 2843

COUNTY SURVEYOR'S CERTIFICATE

This map has been examined for conformance with the requirements of the Land Surveyors Act this 22 day of January, 1981

Dated: \_\_\_\_\_

*Lawrence J Brock*  
Lawrence J Brock RCE 13528  
Plumas County Surveyor

RECORDERS CERTIFICATE

Filed this 22 day of January, 1981, at 11:25 A.M. in Book 5 of R/S at Page 140 at the request of the County Engineer

Fee \$ 9.00  
File No. 5697

Ila Diggs  
County Recorder

By *Isabelle Andrews*  
Deputy

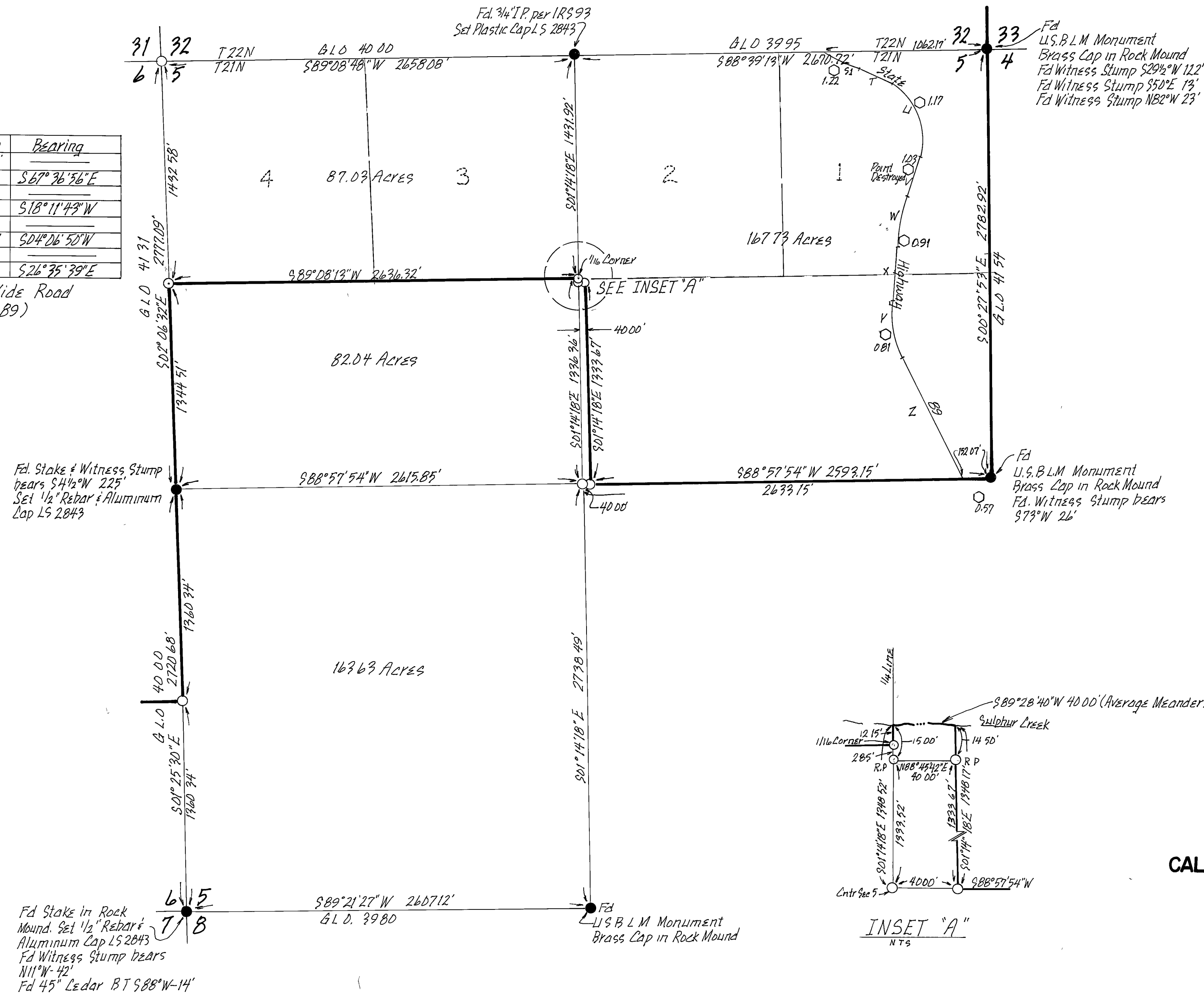
JOHN W. HAMBY  
Paradise, California  
P.O. Box H.H.  
(916) 877-6253

LICENSED LAND SURVEYOR  
Portola, California  
P.O. Box 842  
(916) 832-5571

BRUNING 44-132 40893

Point	Radius	Δ	Length	Bearing
S1	7500.00'	22°09'15"	290.00'	
T			220.62'	S 67°36'56"E
L1	350.00'	85°48'39"	524.19'	
V			262.69'	S 18°11'43"W
W	1400.00'	14°04'53"	344.07'	
X			355.90'	S 04°06'50"W
Y	700.00'	30°42'29"	376.17'	
Z			872.21'	S 26°35'39"E

4 Data for Existing 20' Wide Road (State Highway 89)



**Legend**

- Found Point as noted
- Set 1/2" Rebar & Aluminum Cap L.S. 2843 unless otherwise noted
- Found T-Bar & Aluminum Tag marked as Noted (State Highway Monument)

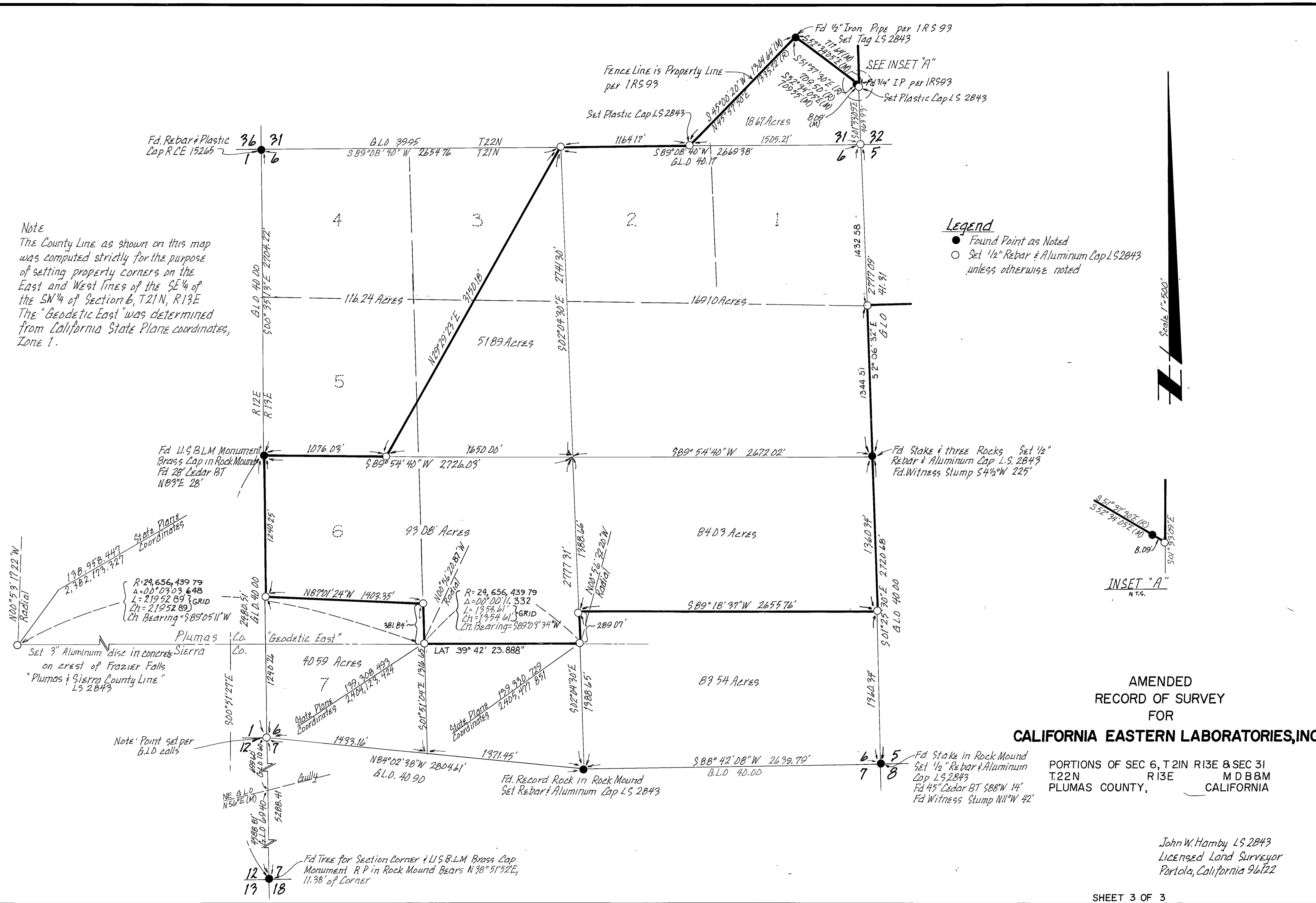
**AMENDED RECORD OF SURVEY FOR CALIFORNIA EASTERN LABORATORIES, INC.**

BEING A PORTION OF THE 1/2 SEC. 5 T.21N., R.13E. M.D.B.&M. PLUMAS COUNTY, CALIFORNIA

John W Hamby L.S. 2843  
Licensed Land Surveyor  
Portola, California 96122

**Note**  
 The County Line as shown on this map was computed strictly for the purpose of setting property corners on the East and West lines of the SE 1/4 of the SW 1/4 of Section 6, T21N, R13E. The "Geodetic East" was determined from California State Plane coordinates, Zone 1.

**Legend**  
 ● Found Point as Noted  
 ○ Set 1/2" Rebar & Aluminum Cap L.S. 2843 unless otherwise noted



AMENDED  
 RECORD OF SURVEY  
 FOR  
**CALIFORNIA EASTERN LABORATORIES, INC.**

PORTIONS OF SEC 6, T21N R13E & SEC 31  
 T22N R13E M D B 8 M  
 PLUMAS COUNTY, CALIFORNIA

John W. Hamby L.S. 2843  
 Licensed Land Surveyor  
 Portola, California 96122