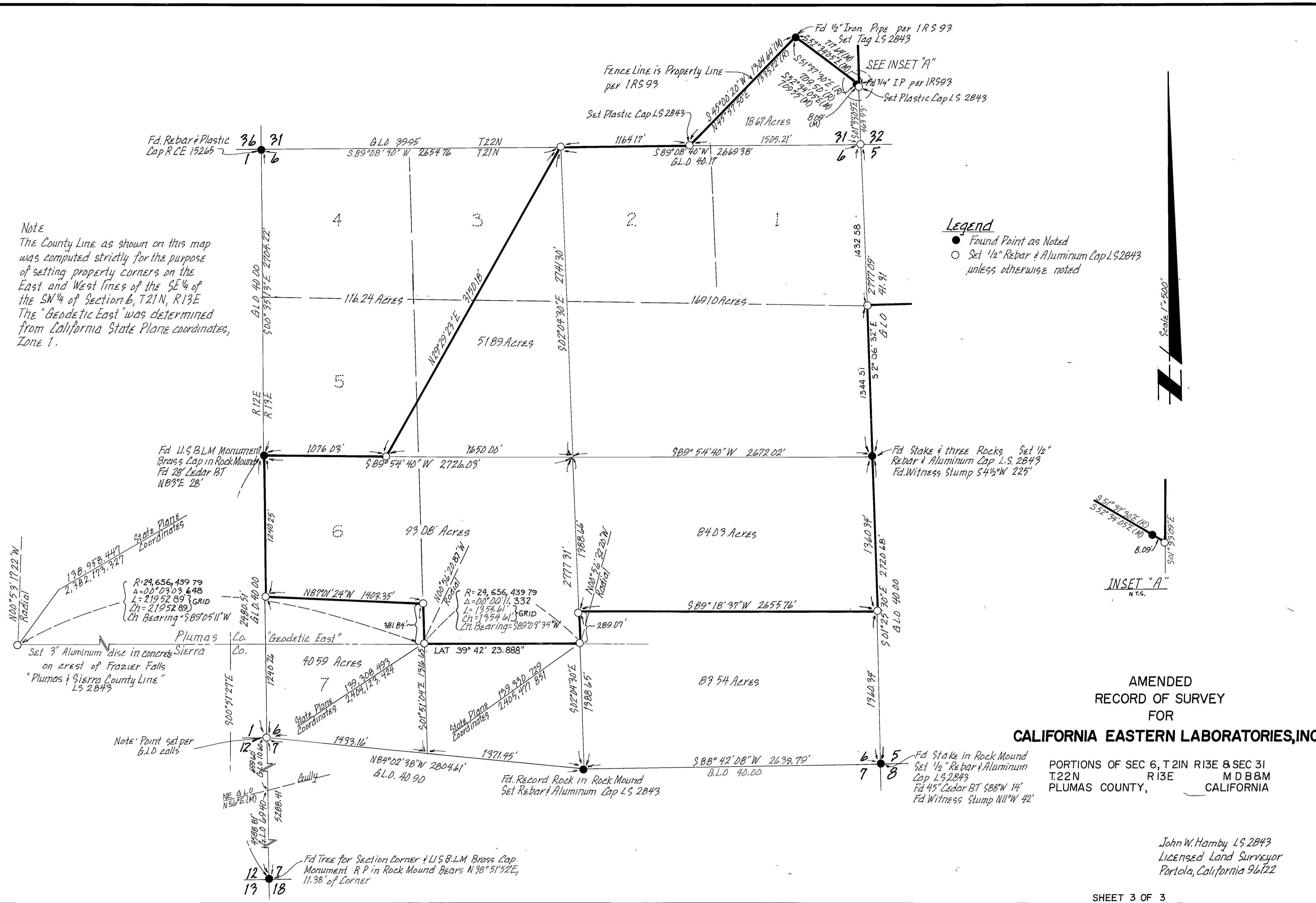


Note
 The County Line as shown on this map was computed strictly for the purpose of setting property corners on the East and West lines of the SE 1/4 of the SW 1/4 of Section 6, T21N, R13E. The "Geodetic East" was determined from California State Plane coordinates, Zone 1.

Legend
 ● Found Point as Noted
 ○ Set 1/2" Rebar & Aluminum Cap L.S. 2843 unless otherwise noted



AMENDED
 RECORD OF SURVEY
 FOR
CALIFORNIA EASTERN LABORATORIES, INC.

PORTIONS OF SEC 6, T21N R13E & SEC 31
 T22N R13E MDBBM
 PLUMAS COUNTY, CALIFORNIA

John W. Hamby L.S. 2843
 Licensed Land Surveyor
 Portola, California 96122