

**SURVEY HISTORY**

The original survey of Sec's 26.thru 34. was made in 1881 by D.C. Hall. the west line of Sec's 30.& 31. was resurveyed by the G.L.O. in 1926. Over the years there have been numerous surveys performed using staff compass and chain methods. The points determined were used as agreement corners by the U.S.F.S. and private land owners. The recovery of the original G.L.O. corners were for the most part accomplished during this period. Additional corner recovery in the last few years was accomplished by U.S.F.S. personel. A survey by L.S. 2061. in Sec's 31.& 32, and mineral surveys N's 6628,6630,6641 in Sec. 29,31& 32, completed the corner recovery at the time we entered the survey area.

Our survey did not recover any additional corner evidence. Procedures used were such that the specified tolerances were not exceeded (1:5000)

**PROJECT TEAM**

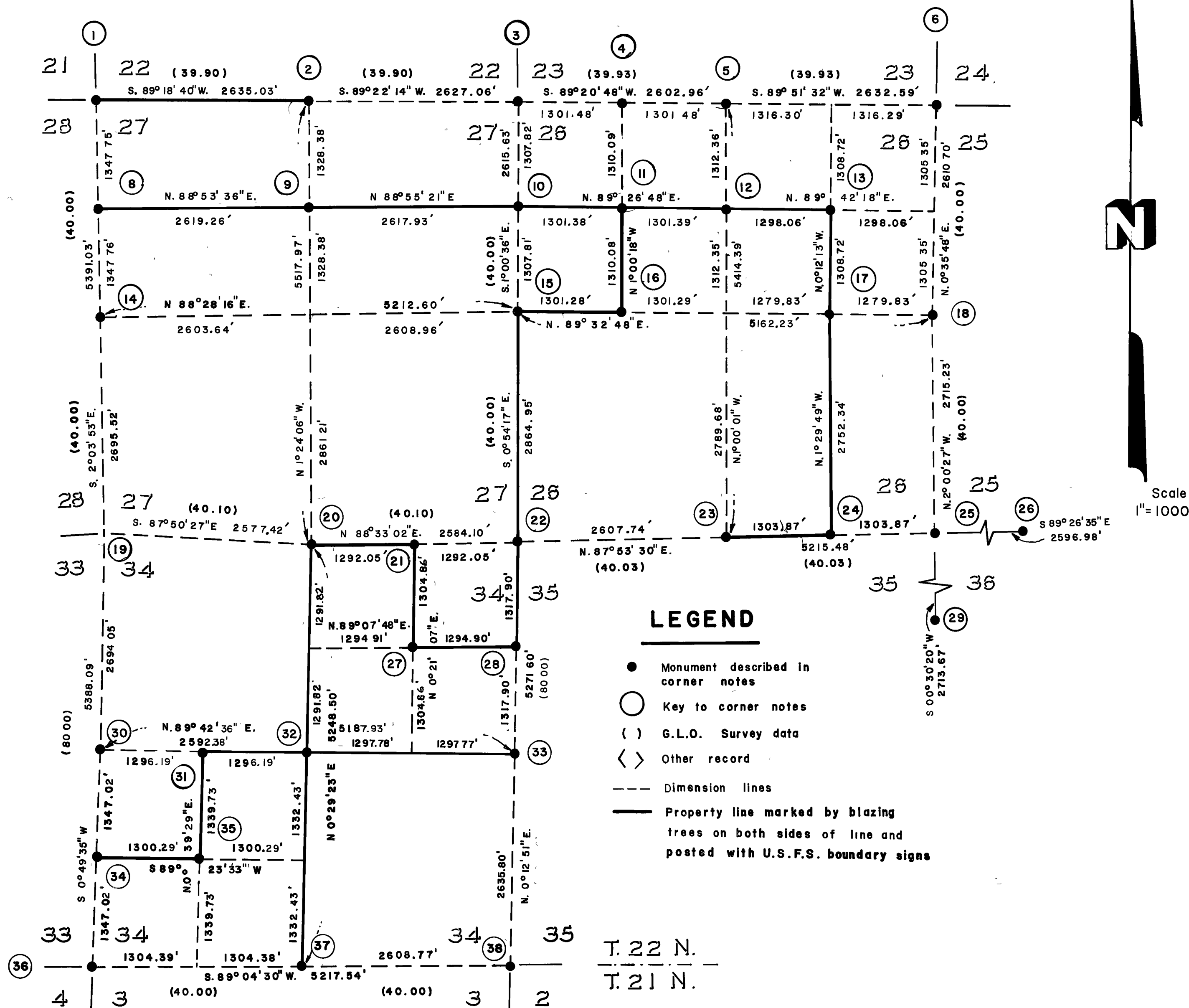
Rod Dawson	L.S. 3621	Mark Bortles	Tech
Jay Burgess	L.S. 4790	Bob Riggins	Tech
Bill Nowlin	L.S. 4753	Jim Arveson	Tech
Bob Raibley	Tech	Mark Adison	Tech
Mike Evans	Tech	Paul Ominsky	Tech

**BASIS OF BEARINGS**

North from Solar observation taken near the Southwest corner of Section 31, T.22 N., R.8 E., M.D.M.

**GENERAL NOTES**

1. Monuments set on this survey were supplied by the U.S.F.S.. They are 3" caps on 2" pipe, all manufactured of aluminum. The corner identification was stamped on the cap as per the 1973 B.L.M. "Manual of Instructions"
2. Trees marked as accessories to corner monuments were scribed to conform to B.L.M. practice. The ties shown were measured to the apparent center of the trees.

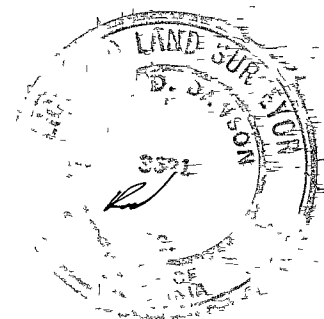


**LEGEND**

- Monument described in corner notes
- Key to corner notes
- ( ) G.L.O. Survey data
- < > Other record
- Dimension lines
- Property line marked by blazing trees on both sides of line and posted with U.S.F.S. boundary signs

**SURVEYOR'S CERTIFICATE**

THIS MAP CORRECTLY REPRESENTS A SURVEY MADE BY ME OR UNDER MY DIRECTION IN CONFORMANCE WITH THE REQUIREMENTS OF THE LAND SURVEYORS ACT IN DEC. 1980 AT THE REQUEST OF Randy Vasquez (L.P. Corp.)  
 Rod Dawson L.S. 3621



**COUNTY SURVEYOR'S CERTIFICATE**

THIS MAP HAS BEEN EXAMINED THIS 28th DAY OF January 1981 FOR CONFORMANCE WITH THE REQUIREMENTS OF THE LAND SURVEYOR'S ACT.  
 COUNTY SURVEYOR Lawrence J Brock RCE 13528  
 DEPUTY

**RECORDER'S CERTIFICATE**

FILED THIS 28 DAY OF January 1981 AT 2:45 P.M. IN BOOK 5 OF Record of Surveys AT PAGE 143 AT THE REQUEST OF the County Engineer  
 FEE: \$71 File No 5835  
 COUNTY RECORDER ILA DIGGS  
 DEPUTY Isabelle Andrews

**RECORD OF SURVEY**

FOR LOUISIANA PACIFIC CORP. & THE PLUMAS NATIONAL FOREST OF SECTIONS 26 THRU 34 T. 22 N., R. 8 E., M.D.M. COUNTY OF PLUMAS, CA.  
 DAWSON BURGESS LAND SURVEYS. REDDING CALIF. FALL 1980 SHEET 1, OF 4 SHEETS