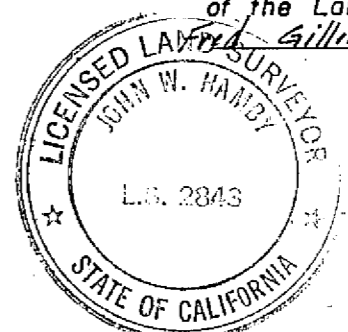


SURVEYOR'S CERTIFICATE

This map correctly represents a survey made by me or under my direction in conformance with the requirements of the Land Surveyors Act of the request of Fred V. Gillen, et al in June, 1977



John W. Hamby
John W. Hamby LS 2843

COUNTY SURVEYOR'S CERTIFICATE

This map has been examined for conformance with the requirements of the Land Surveyors Act this 22nd day of March, 1978

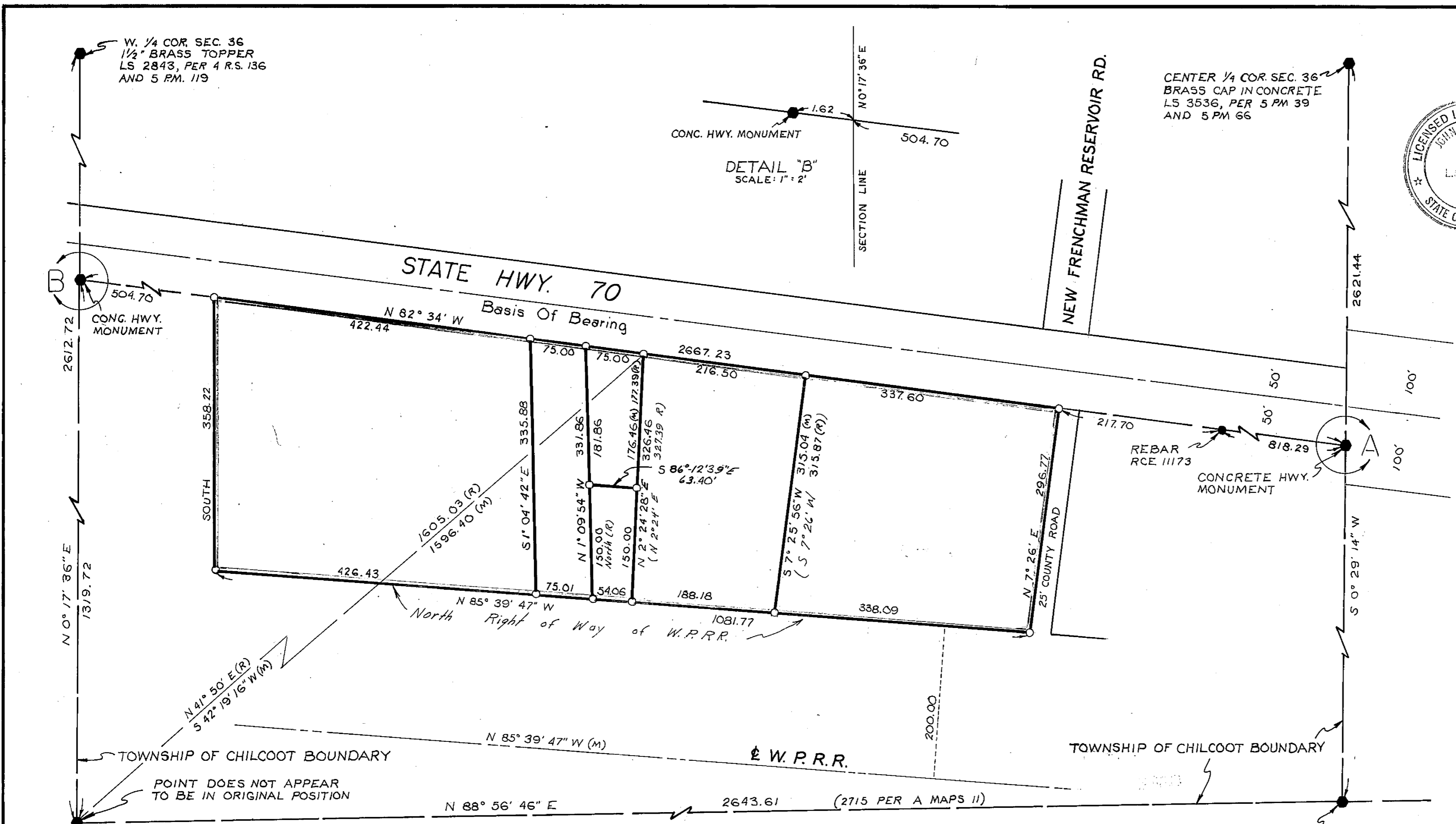
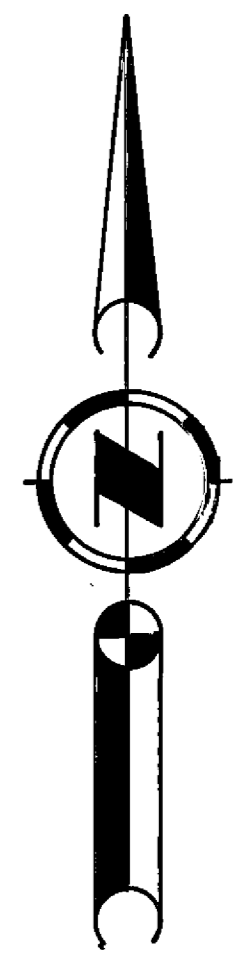
Samuel P. ...
Plumas County Surveyor

RECORDER'S CERTIFICATE

Filed this 22nd day of March, 1978 at 1:07 p.m. in Book 5 of Maps at Page 9 at the request of County Engineer File No. 525 Fee

6982 Raynelle Staten
County Recorder

by *Catherine Skuman*
Deputy



DETAIL "B"
SCALE: 1" = 2'

DETAIL "A"
SCALE: 1" = 20'

BASIS OF BEARING:
The South line of Highway 70, shown as N 82° 34' W on various Deeds and Record Maps, Plumas County Records. Including 2 RS 43, 3 R.S. 15, 2 P.M. 88 and 2 P.M. 122 Measured distances conform to record except where otherwise noted.

LEGEND:
● = Found capped rebar, RCE 11173
○ = Set 5/8" Rebar with aluminum cap, LS 2843
● = Found Monument as noted
(M) = Measured
(R) = Record Information

RECORD OF SURVEY
for
FRED V. GILLEN, ET. AL.
A PORTION OF THE SW. 1/4 OF SEC. 36,
T. 23 N., R. 16 E., M.D.B.&M.
PLUMAS COUNTY, CALIFORNIA

By
John W. Hamby LS 2843
Licensed Land Surveyor
P.O. Box 842 832 5571
Portola, California

LOCATION MAP

