

Ref ② notes that the corner location was reestablished from 4 found bearing trees from 1882 glo resurvey, and that a 2.2 cedar post was set

Ref ② notes that pipe and brass cap, per 1923 glo resurvey, was not found

Ref ② notes found pipe with 3/2 dia brass cap marked USQLOS COR #22 LVNP T30N R6E
S20 | S21
S29 | S28
1923

Ref ② notes found pipe with 3/2 dia brass cap marked USQLOS 1/4 Cor #23 LVNP S29 | S28 1923

Ref 2 notes that a 3/4 ip tagged RE 7567 for E 1/4 cor of Sec 30 per Map ① was found

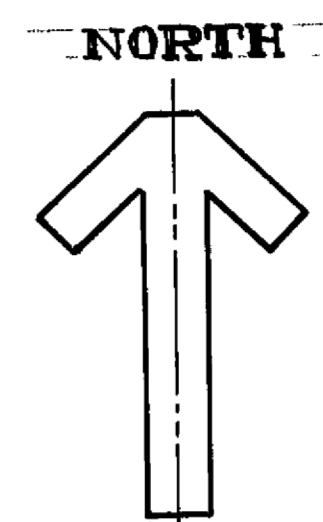
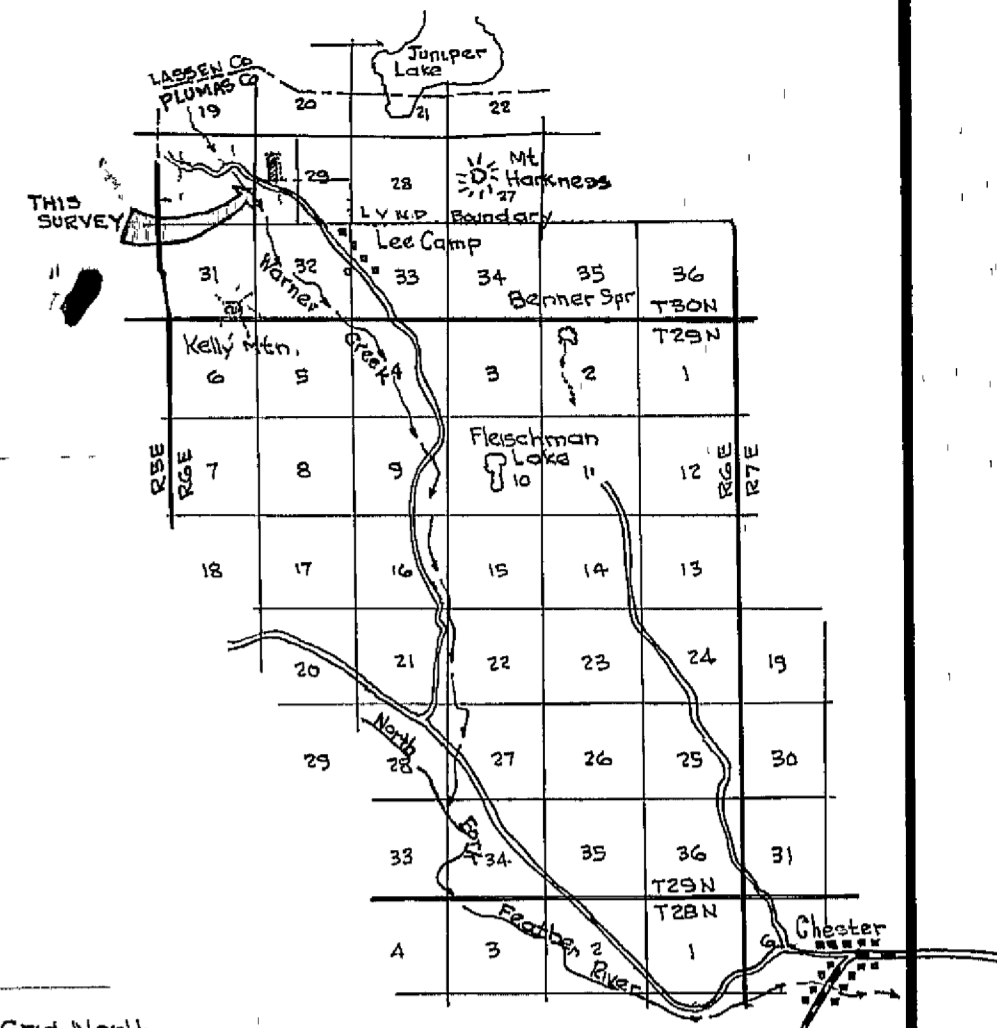
ref ② notes found 3/4 ip tagged RE 7567 per Map ①

LEGEND

ref 2 notes that a 3/4 tagged ip per Map ① is missing; theoretical location of this Sec Cor established by record distances from South and East 1/4 corners of Sec 30 per Map ①. No point set

o Set 1/4 ip tagged RCE 22148, or other point as described
 * Found point as described
 * Record point per Ref ② see note B
 Note: Found monuments A-35, A-37, A-38, and A-39 are 3" dia aluminum plates in square conc posts, inscribed as follows:

NOTES
 A Referenced Map ① is that Record of Survey for W.H. & Joe N Lee by A J Vandenburg, RCE 7567, Filed in the office of the County Recorder of Plumas Co on the 10th of June, 1954, in Book 1 of Record of Surveys at page 113.
 B Reference ② is an unrecorded survey by Clair Hill Associates, Redding, Calif. for the National Park Service in 1977



SCALE 1" = 400'
 Basis of bearings is Grid North per the California Coordinate System from triangulation stations on Mt Lassen and Mt. Harkness, from found points along the E line of the SW 1/4 of the NW 1/4, per ref ②

VICINITY MAP
 SCALE 1/2" = 1 MILE



SURVEYOR'S CERTIFICATE

This map correctly represents a survey made by me in conformance with requirements of the Land Surveyors Act, in December 1977 at the request of F C Geary
 James L Uptegrove
 James L Uptegrove RCE 22148

COUNTY SURVEYOR'S CERTIFICATE

This map has been examined this 26th day of April, 1978 for conformance with the requirements of the Land Surveyors Act
 Larry A Fife
 Larry A Fife Plumas County Engineer RCE 13225

RECORDER'S CERTIFICATE

Filed this 26th day of April, 1978 at 3:10 P.M. in Book 5 of Record of Surveys at page 11, at the request of the Plumas County Engineer
 Fee \$5.00 Pd File No. 7724

Raynelle Slaten, Plumas County Recorder
 by Kathleen M. Dole
 Deputy

COUNTY SURVEYOR'S NOTE

The only surveying performed by the surveyor for this Record of Survey was within the SW 1/4 of the NW 1/4 of Section 29. All other data shown on this map is from the field notes of Clair Hill & Associates, agents for the National Park Service, 1977, and cannot be shown as record, in my opinion, since no record of survey has been filed for record by the responsible surveyor in the office of the Plumas County Recorder.

RECORD of SURVEY

for
Forrest C. Geary
 of a portion of
 The SW-1/4 of the NW-1/4 of
 Sec 29, T 30N, R 6E MDB & M
 Plumas County, California

5 RS 11

SHEET 1 of 1
 Cont'd of Correc from
 311 or 316