

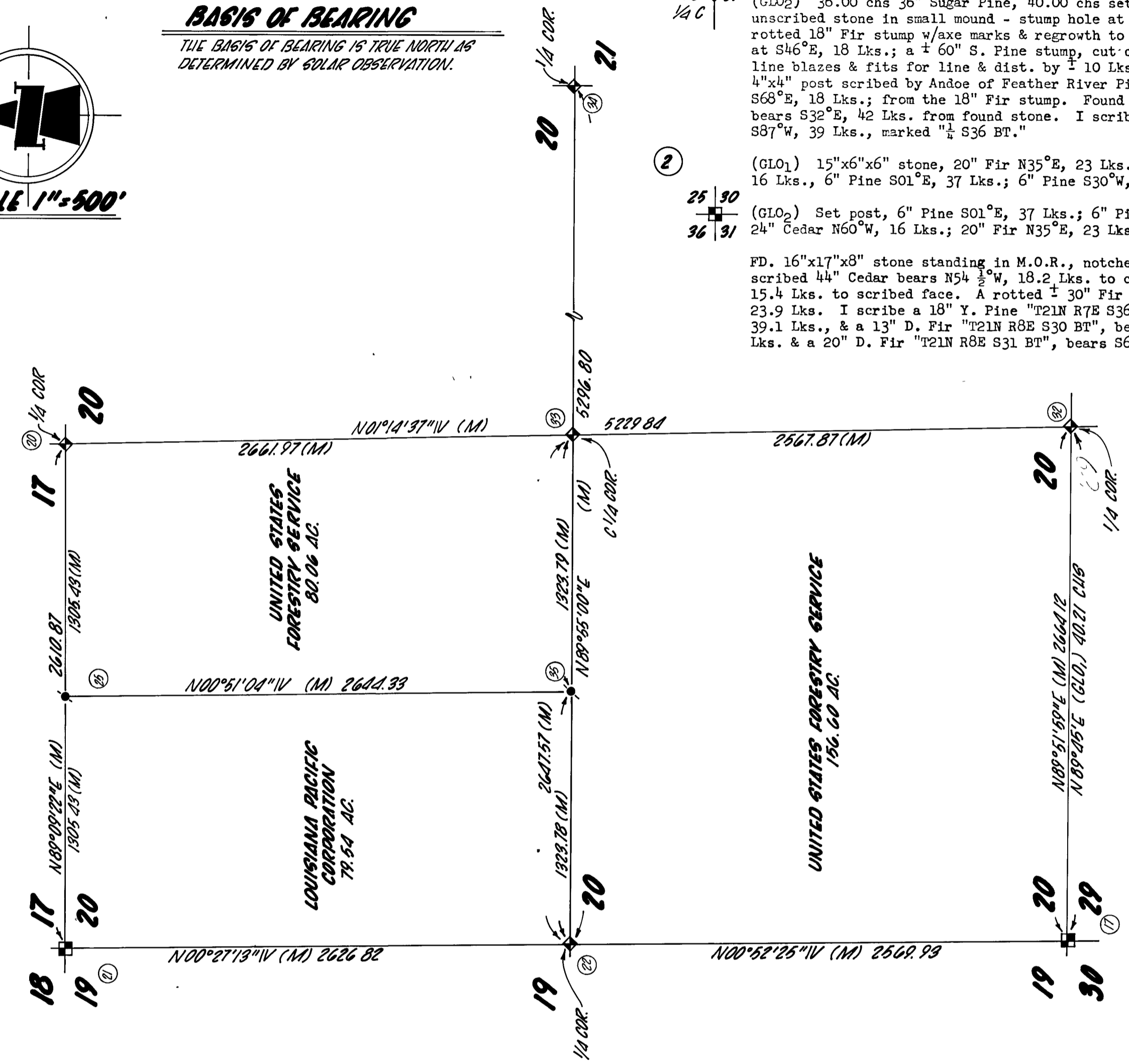
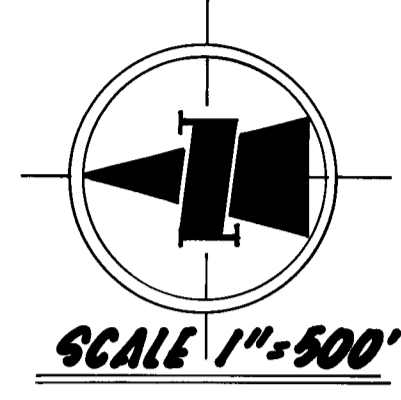
CORNER NOTES

- ① (GLO₁) 17"x10"x6" stone, 4" Fir S81°W, 21 Lks.; 8" Fir S68°E, 18 Lks.
 (GLO₂) 36.00 chs 36" Sugar Pine, 40.00 chs set post FD. 16"x10"x6" unscribed stone in small mound - stump hole at S82°W, 21 Lks., a rotted 18" Fir stump w/axe marks & regrowth to within 6" of center at S46°E, 18 Lks.; a 1/2 60" S. Pine stump, cut-off high has original line blazes & fits for line & dist. by 1/2 10 Lks. - Found a Fir 4"x4" post scribed by Andoe of Feather River Pine Mills - bears S68°E, 18 Lks.; from the 18" Fir stump. Found a scribed 26" W. Fir bears S32°E, 42 Lks. from found stone. I scribe a 22" D. Fir bears S87°W, 39 Lks., marked 1/4 S36 BT."
- ② (GLO₁) 15"x6"x6" stone, 20" Fir N35°E, 23 Lks.; 24" Cedar N60°W, 16 Lks., 6" Pine S01°E, 37 Lks.; 6" Pine S30°W, 53 Lks.
 (GLO₂) Set post, 6" Pine S01°E, 37 Lks.; 6" Pine S30°E, 53 Lks.; 24" Cedar N60°W, 16 Lks.; 20" Fir N35°E, 23 Lks.
 FD. 16"x17"x8" stone standing in M.O.R., notches not distinct; a scribed 44" Cedar bears N54 1/2°W, 18.2 Lks. to center & N60°W, 15.4 Lks. to scribed face. A rotted 1/2 30" Fir stump bears N65°E, 23.9 Lks. I scribe a 18" Y. Pine "T21N R7E S36 BT"; bears S05°W, 39.1 Lks., & a 13" D. Fir "T21N R8E S30 BT", bears N05°E, 42.9 Lks. & a 20" D. Fir "T21N R8E S31 BT", bears S67°E, 45.9 Lks.
- ③ (GLO₁) 10"x10"x6" stone, a 14" B. Oak N23 1/2°E, 11 Lks., & 16" B. Oak S44°W, 38 Lks.
 Found a scribed stone 14"x10"x6" set 6" deep in M.O.R. 3' dia. & 1' high. At S54°W, 38 Lks.
 FD. a stump hole & charred remains of Oak. I scribe a 9" D. Fir 1/4 S25 BT", bears N42 1/2°W, 15.2 Lks. & a 31" Y. Pine 1/4 S30 BT", bears N44°E, 56.7 Lks.
- ④ (GLO₁) Scribed a Sugar Pine 27" dia. for cor., from which a 13" S. Pine bears N27 1/2°E, 23 Lks. & a 30" S. Pine S25°W, 74 Lks.
 FD a 53" forked S. Pine scribed on North side, a 29" S. Pine w/ healed scar bears N27 1/2°E, 25 Lks., center to center & 23 Lks., from center of 1/4 cor. tree to approx. face of scribe. 36" S. Pine snag stands w/exposed scribe at S25°W, 76 Lks., center to center & 74 Lks., center of 1/4 cor. tree to face of scribe. I scribe a 16" Black Oak 1/4 S31 BT", bears S22°W, 45 1/2 Lks.
- ⑤ (GLO₁) 14"x14"x3" stone, 17" Spruce N74°W, 22 Lks.; 5" B. Oak S13°W, 28 Lks. & 20" Spruce N15°E, 27 Lks.
 FD 19"x18"x3" scribed stone with no M.O.R., from which a 56" D. Fir bears N02°E, 32 Lks., & a 42" D. Fir S78°W, 24 Lks., increment boring shows old face in trees at proper depth & age.

CONTINUED, PAGE 3

BASIS OF BEARING

THE BASIS OF BEARING IS TRUE NORTH AS DETERMINED BY SOLAR OBSERVATION.



LEGEND

- (GLO₁) - GOVERNMENT LAND OFFICE FIELD NOTES BY D.C. HALL, JULY 5, 1881
 - (GLO₂) - GOVERNMENT LAND OFFICE FIELD NOTES BY T.F. BATELLE, JULY 19, 1869
 - (GLO₃) - GOVERNMENT LAND OFFICE FIELD NOTES BY C. CAUDLE, FEBRUARY 6, 1909
 - (GLO₄) - GOVERNMENT LAND OFFICE FIELD NOTES BY A.W. KEDDIE, AUGUST 23, 1869
 - - MONUMENTED CORNERS, SEE NOTE BELOW
 - ◊ - CALCULATED ONLY
 - (M) - MEASURED DATA
 - M.O.R. - MOUND OF ROCK
 - BT - BEARING TREE
 - B.O., B. OAK - BLACK OAK
 - D. FIR - DOUGLAS FIR
 - W. FIR - WHITE FIR
 - Y. PINE - YELLOW PINE
 - S. PINE - SUGAR PINE
 - ◊ ◻ - MONUMENTED 1/4 CORNER OR SECTION CORNER, SEE NOTE BELOW
- NOTE:** ALL DISTANCES TO BEARING TREES ARE TO CENTER OF TREE UNLESS OTHERWISE NOTED. ALL CORNERS EXCEPTING THOSE OCCUPIED BY TREES ARE MONUMENTED WITH A STANDARD U.S. 30" ALUMINUM PIPE WITH FLANGE IN A MOUND OF STONE 3' IN DIAMETER AND 1' HIGH OR LARGER. CORNERS DEVIATING FROM THIS DESCRIPTION ARE SO NOTED UNDER CORNER NOTES.

RECORD OF SURVEY
 BEING SECTIONS 30 AND 31 AND A PORTION OF SECTION 20, T.21N., R.8E., M.D.M. IN THE UNINCORPORATED AREA OF PLUMAS COUNTY, CALIFORNIA FOR LOUISIANA PACIFIC CORPORATION

SURVEYOR'S CERTIFICATE
 THIS MAP CORRECTLY REPRESENTS A SURVEY MADE BY ME OR UNDER MY DIRECTION IN CONFORMANCE WITH THE REQUIREMENTS OF THE LAND SURVEYORS ACT AT THE REQUEST OF LOUISIANA PACIFIC CORPORATION IN JUNE 1978
William W. Geddis
 WILLIAM W. GEDDIS 12-3625

COUNTY SURVEYOR'S CERTIFICATE
 THIS MAP HAS BEEN EXAMINED FOR CONFORMANCE WITH THE REQUIREMENTS OF THE LAND SURVEYORS ACT THIS _____ DAY OF _____, 197_____

 COUNTY SURVEYOR

RECORDER'S CERTIFICATE
 FILED THIS _____ DAY OF _____ 197_____, AT _____ M
 IN BOOK _____ OF MAPS AT PAGE _____, AT THE REQUEST OF
 THE COUNTY ENGINEER
 FEE _____
 FILE NO _____
 RAYUELLE SLATEN
 COUNTY RECORDER
 BY DEPUTY

GEDDIS BRISCOLL AND ASSOCIATES
 ENGINEERING SURVEYING PLANNING
 463 ORO DAM BLVD., SU. M OROVILLE, CA. 95965 (916) 533-2068
 SHEET 2 OF 3 SHEETS 78-135