

A circular seal for a Licensed Land Surveyor. The outer ring contains the text "LICENSED LAND SURVEYOR" at the top and "STATE OF CALIFORNIA" at the bottom, separated by a small star on the left. Inside the ring, the name "JOHN W. HAMBY" is written in an arc. In the center of the seal, the license number "L.S. 2843" is printed.

John W Hamby  
John W Hamby

LS 2843

**COUNTY SURVEYOR'S CERTIFICATE:**

This map has been examined for conformance with the requirements of the Land Surveyors Act this 25<sup>th</sup> day of JANUARY 1979

(b) Clifford R. Brown P.O. 22836

Plumas County Surveyor

RECORDER'S CERTIFICATE:

Filed this 25th day of January, 1979 at 12:45 p. m.  
in Book 5 of RS at Page 42 at the request of  
the County Engineer

Fee \$ 5.00  
File No: 6198

Raynelle Slaten  
Plumas County Recorder

Mildred Cotter  
By Deputy

**BASIS OF BEARING:**

The South Easterly line of the Cedar Tavern Lot shown as S34°54'30"W on the Record of Survey Map filed in Book 1 of R.S. at Page 110. Plumas County Records

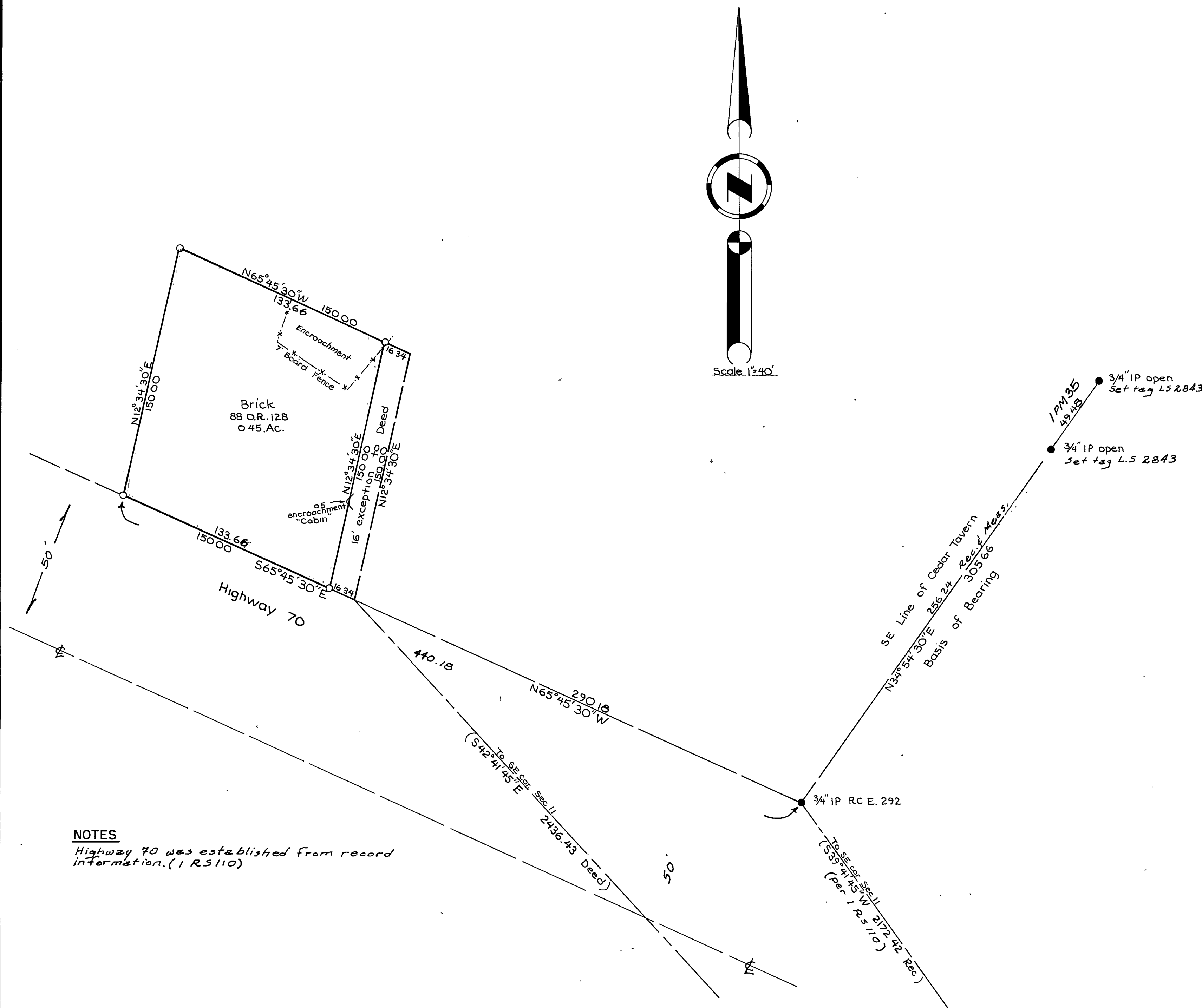
**LEGEND:**

● Set 1/2" capped rebar LS 2843  
● Found pipe as noted

RECORD OF SURVEY  
for

**DAYTON P. BRICK**  
A PORTION OF THE NW¼ OF THE SE¼  
OF SECTION 11, T23N, R11E, M.D.B.&M.  
PLUMAS COUNTY, CALIFORNIA

By  
John W Hamby LS2843  
Licensed Land Surveyor  
Portola, California  
October, 1978



## NOTES

Highway 70 was established from record information. (1 RS110)