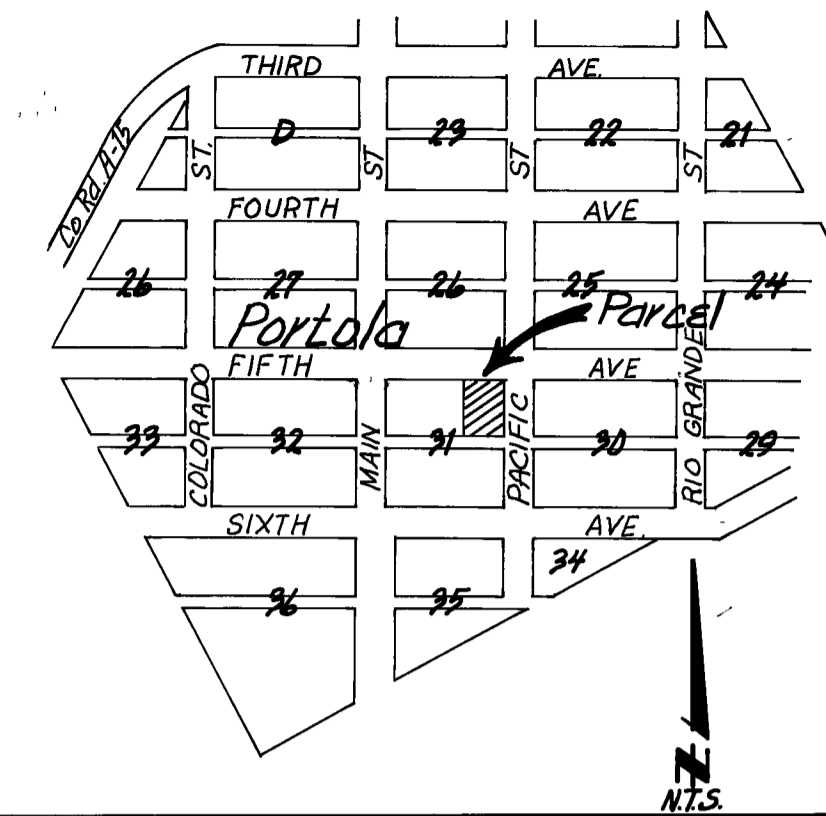
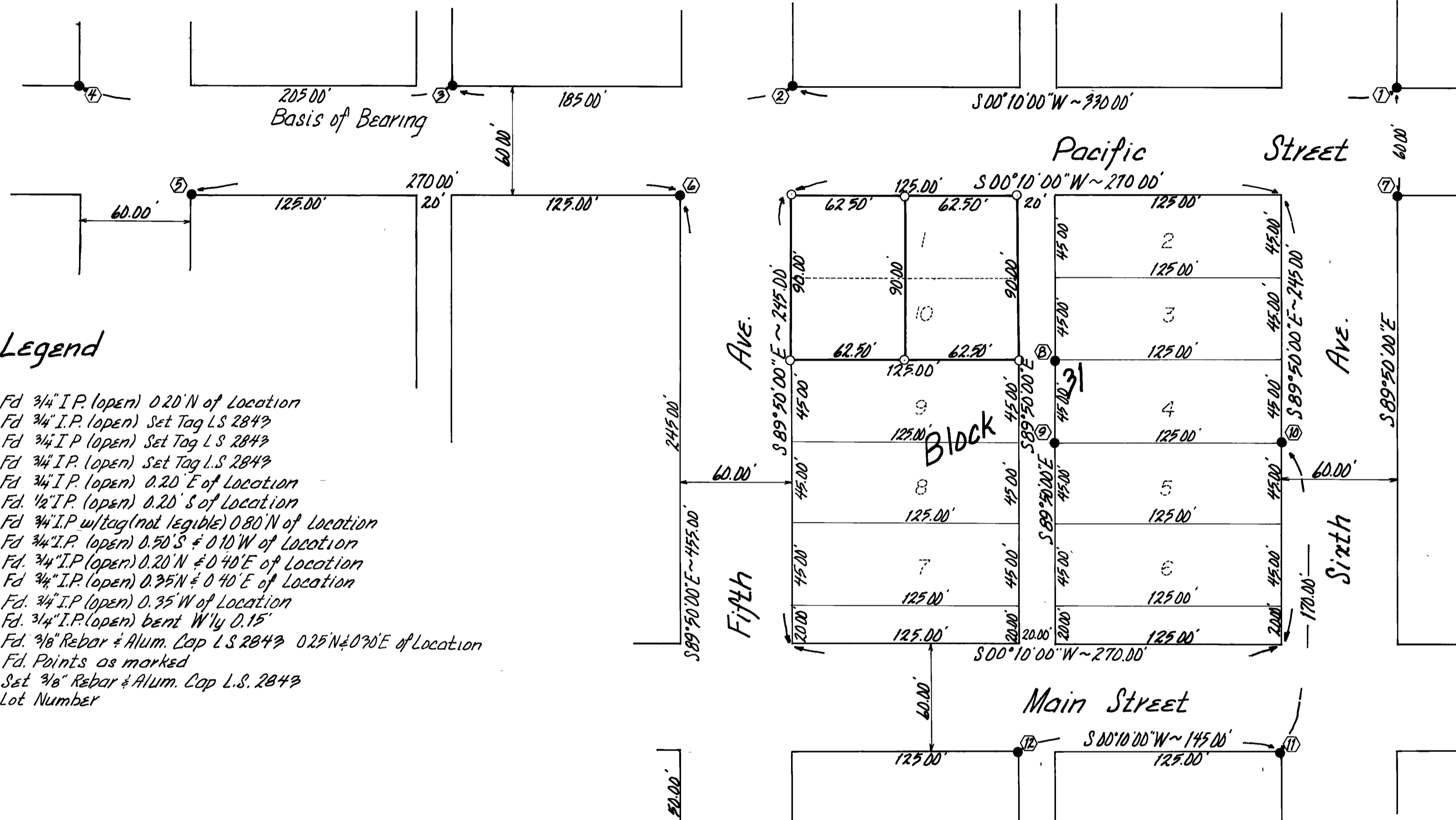


Scale 1" = 50'



Location Map

Legend

- ① Fd 3/4" I.P. (open) 0.20' N of Location
- ② Fd 3/4" I.P. (open) Set Tag L.S. 2843
- ③ Fd 3/4" I.P. (open) Set Tag L.S. 2843
- ④ Fd 3/4" I.P. (open) Set Tag L.S. 2843
- ⑤ Fd 3/4" I.P. (open) 0.20' E of Location
- ⑥ Fd 1/2" I.P. (open) 0.20' S of Location
- ⑦ Fd 3/4" I.P. w/tag (not legible) 0.80' N of Location
- ⑧ Fd 3/4" I.P. (open) 0.50' S & 0.10' W of Location
- ⑨ Fd 3/4" I.P. (open) 0.20' N & 0.40' E of Location
- ⑩ Fd 3/4" I.P. (open) 0.35' N & 0.40' E of Location
- ⑪ Fd. 3/4" I.P. (open) 0.35' W of Location
- ⑫ Fd. 3/4" I.P. (open) bent W'y 0.15'
- ⑬ Fd. 3/8" Rebar & Alum. Cap L.S. 2843 0.25' N & 0.70' E of Location
- Fd. Points as marked
- Set 3/8" Rebar & Alum. Cap L.S. 2843
- 2 Lot Number

Basis of Bearing:
E Line of Pacific Street as per Map
Robert's Lumber Company Addition to
Portola Townsite

Note: All distances & bearings are
Record & Measured.

Note:
This map shows Lot Line Adjustment
approved by Portola Planning Commission
at the regular meeting in January 1979.
Deed Ref # 301 DR 599

RECORD OF SURVEY
OF
Lots 1 & 10 of Block 31 Robert's Lumber
Company Addition to Portola Townsite
CAL CARLSON

Located in Sec. 1 T. 22N, R. 17E MDB. & M
PLUMAS COUNTY, CALIFORNIA

JOHN W. HAMBY
Paradise, California
(916) 877-6253
Sheet 1 of 1

LICENSED LAND SURVEYOR
Portola, California
P.O. Box 842
(916) 832-5571

SURVEYOR'S CERTIFICATE

This map correctly represents a survey made by me or under my direction in conformance with the requirements of the Land Surveyors Act at the request of Cal Carlson on May 4th, 1979

John W. Hamby
John W Hamby L.S. 2843

COUNTY SURVEYOR'S CERTIFICATE

This map has been examined for conformance with the requirements of the Land Surveyors Act this 25th day of May, 1979.

Lawrence J Brock
Plumas County Surveyor
Lawrence J Brock RCE 13528

RECORDERS CERTIFICATE

Filed this 25th day of May, 1979, at 11:45 A.M. in Book 5 of R.S. at Page 48 at the request of the County Engineer

Raynelle Staten
County Recorder

Fee \$ 5.00
By *Isabelle Andrews*
Deputy

File No. 8960

BRUNING 44-132 40693