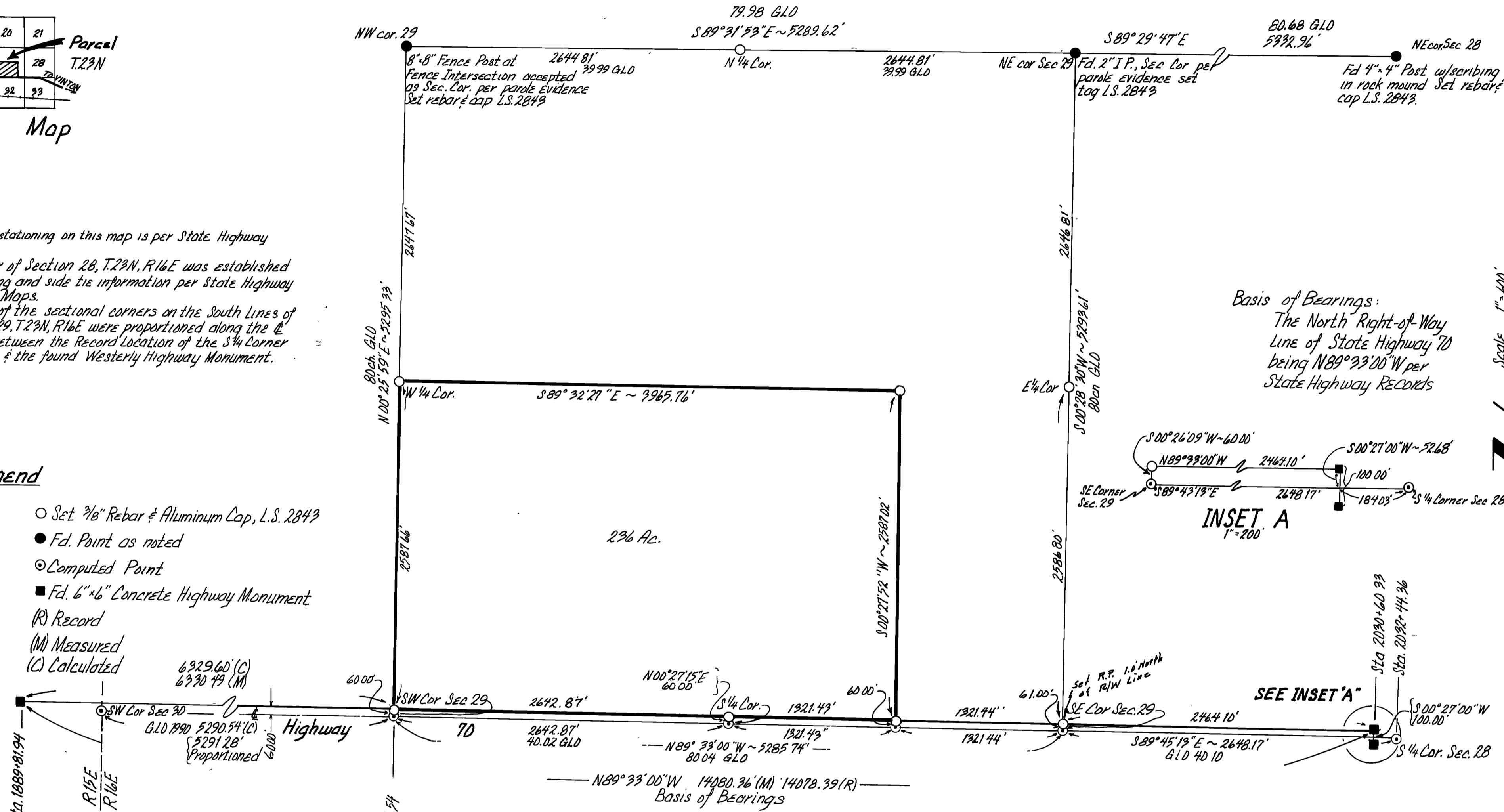


Notes:
 The Highway stationing on this map is per State Highway Records.
 The S¹/₄ Corner of Section 28, T.23N, R.16E was established using stationing and side tie information per State Highway Construction Maps.
 The location of the sectional corners on the South Lines of Sections 20 & 29, T.23N, R.16E were proportioned along the Highway 70 between the Record Location of the S¹/₄ Corner of Section 28 & the found Westerly Highway Monument.

Legend

- Set 3/8" Rebar & Aluminum Cap, L.S. 2843
- Fd. Point as noted
- ⊙ Computed Point
- Fd. 6" x 6" Concrete Highway Monument
- (R) Record
- (M) Measured
- (C) Calculated



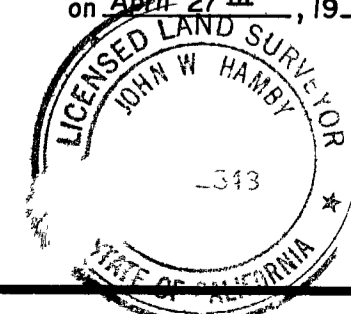
Basis of Bearings:
 The North Right-of-Way Line of State Highway 70 being N89°33'00"W per State Highway Records

INSET A
 1" = 200'

RECORD OF SURVEY
 OF
 A Portion of Sec. 29, T.23N, R.16E
 Plumas Co. M.D.B. & M. California
 for
JIM SANDERS

SURVEYOR'S CERTIFICATE

This map correctly represents a survey made by me or under my direction in conformance with the requirements of the Land Surveyors Act at the request of Jim Sanders on April 27th, 1979.



John W. Hamby
 John W Hamby LS 2843

COUNTY SURVEYOR'S CERTIFICATE

This map has been examined for conformance with requirements of the Land Surveyors Act this 6th day of June, 1979.

Lawrence J. Brock
 Lawrence J. Brock RCE 13528

RECORDERS CERTIFICATE

Filed this 6th day of June, 1979, at 1:40 P.M. in Book 5 of RS at Page 50 at the request of the County Engineer

Fee \$5.00
 File No 27070

Raynelle Staten
 County Recorder
 By *Isabelle Andrews*
 Deputy

JOHN W. HAMBY
 Paradise, California
 P.O. Box H.H.
 (916) 877-6253

LICENSED LAND SURVEYOR
 Portola, California
 P.O. Box 842
 (916) 832-5571

BRUNING 44-132-40893