

DATA FOR SET CORNERS

- SET 1" I.P. ~ L.S. 4655- STONE MOUND
SCRIBED 8" Y. PINE S 49° E 1.10'
SCRIBED 7" CEDAR N 76° W 46.6'
CORNER IS 25' EAST OF ROAD
- SET 1" I.P. ~ L.S. 4655- STONE MOUND
SCRIBED 18" Y. PINE N 85° W 10.11'
TAGGED TELEPHONE POLE N 64° E 75.4'
- SET 1" I.P. ~ L.S. 4655- STONE MOUND
SCRIBED 11" W. FIR N 78° E. 17.8'
SCRIBED 13" W. FIR S. 74° W. 15.4'
- SET 1" I.P. ~ L.S. 4655- STONE MOUND
SCRIBED 5" Y. PINE N 83° W 12.6'
SCRIBED 11" Y. PINE N 87 1/2° E 26.0'
- SET 1" I.P. ~ L.S. 4655- STONE MOUND
SCRIBED 16" Y. PINE N. 70° E. 187.5'
SCRIBED 22" Y. PINE S 6° E 13.0'
CORNER FALLS 30' SOUTH OF LONE ROCK CR
- SET 1" I.P. ~ L.S. 4655- STONE MOUND
SCRIBED 6" W. FIR S 84° E 18.8'
SCRIBED 8" W. FIR N 40° W 45.7'
- SET 1" I.P. ~ L.S. 4655- STONE MOUND
SCRIBED 11" Y. PINE S 16° W 23.3'
SCRIBED 15" Y. PINE N 3° E 39.1'
- SET 3/4" I.P. ~ L.S. 4655- STONE MOUND.
SCRIBED 12" W. FIR S 39° W 2.8'
SCRIBED 13" W. FIR S. 68° E. 26.1'
- SET 3/4" I.P. ~ L.S. 4655- STONE MOUND.
SCRIBED 11" W. FIR S 10° E. 10.8'
SCRIBED 11" W. FIR N 25° E 7.7'
E OF ROAD WEST 50±
- SET 1" I.P. ~ L.S. 4655- STONE MOUND.
SCRIBED 11" W. FIR S 60° W 9.5'
SCRIBED 11" W. FIR N 29 1/2° E 13.4'
- SET 1" I.P. ~ L.S. 4655- STONE MOUND.
SCRIBED 9" W. FIR N 84° W 8.3'
SCRIBED 8" Q ASPEN S 72° E 14.8'
- SET 3/4" I.P. ~ L.S. 4655- STONE MOUND
SCRIBED 5" W. FIR N 52° E. 13.6'
SCRIBED 15" W. FIR N 13° W. 15.3'
- SET 1" I.P. ~ L.S. 4655- STONE MOUND
SCRIBED 11" W. FIR EAST 24.7'
SCRIBED 6" W. FIR S 22° E. 13.8'
- SET 1" I.P. ~ L.S. 4655- STONE MOUND
SCRIBED 11" W. FIR N. 85° W 11.4'
SCRIBED 12" P. PINE N. 10° W 11.4'
- SET 3/4" I.P. ~ L.S. 4655- STONE MOUND
SCRIBED 10" LODGEPOLE PINE S 48° W 14.3'
SCRIBED 23" LODGEPOLE PINE S 78° E 32.1'
- SET 3/4" I.P. ~ L.S. 4655- STONE MOUND
SCRIBED 10" Y. PINE S 76° W 32.0'
TAGGED 25" W. FIR S 37° W. 20.3'
- SET 1" I.P. ~ L.S. 4655- STONE MOUND
SCRIBED 10" Y. PINE S 58° E 14.7'
SCRIBED 14" W. FIR N 86° W 6.1'
- SET 3/4" I.P. ~ L.S. 4655- STONE MOUND
SCRIBED 15" LODGEPOLE PINE S 79° E. 37.3'
- SET 1" I.P. ~ L.S. 4655- STONE MOUND.
SCRIBED 8" W. FIR S 24° W 4.8'
SCRIBED 6" W. FIR N 6° E 3.5'
- TAGGED 15" X 10" ROCK AS CORNER
SET 1" I.P. ~ L.S. 4655 AS W.C. 0.21' WEST
SCRIBED 6" W. FIR N. 12° E. 6.5'
CORNER IS 30' NORTH OF ROAD
- SET 3/4" I.P. ~ L.S. 4655- STONE MOUND
SCRIBED 7" W. FIR S 45° W. 14.0'
SCRIBED 9" W. FIR N 78° E 25.4'
- CORNER FALLS IN ROAD- SET 404 NAIL
SCRIBED 12" Y. PINE S 12° E 7.4'
SCRIBED 13" Y. PINE N 12° E 13.6'
SET 3/4" I.P. ~ L.S. 4655 AS W.C. N 89° 52' 30" E 20.00'
- CORNER FALLS IN ROAD
SCRIBED 15" W. FIR N 88° W 7.6'
SET 3/4" I.P. ~ L.S. 4655 AS W.C.
N 1° 06' 46" E 32.62'

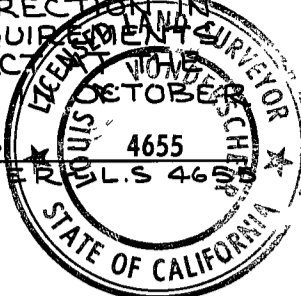
FOUND STONE MOUND
SET U.S.F.S. MONUMENT
FOUND G.L.O. BT S:
32" Y. PINE N 22° E 77.3' (N 25° E 78.5')
24" Y. PINE SNAG S 77° E 31.7' (S 81° E)
36" Y. PINE N 63° W 9.2' (N 55 1/2° W)
35" Y. PINE S 14° W 27.7' (S 20° W)
SCRIBED 7" W. FIR S 22° E 22.0'
CORNER FALLS 30' SOUTH OF ROAD.

COUNTY SURVEYOR'S CERTIFICATE.

THIS MAP HAS BEEN EXAMINED FOR CONFORMANCE WITH THE REQUIREMENTS OF THE LAND SURVEYOR'S ACT THIS 30th DAY OF July 1979.
Louis A. Vonderscher
PLUMAS COUNTY SURVEYOR

SURVEYOR'S CERTIFICATE.

THIS MAP CORRECTLY REPRESENTS A SURVEY MADE BY ME OR UNDER MY DIRECT CONTROL IN CONFORMANCE WITH THE REQUIREMENTS OF THE LAND SURVEYOR'S ACT THIS 30th DAY OF July 1978.
Louis A. Vonderscher
PLUMAS COUNTY SURVEYOR



COUNTY RECORDER'S CERTIFICATE

FILED THIS 30th DAY OF July 1979 AT 2:30 P.M. IN BOOK 5 OF Record of Surveys AT PAGE 55 AT THE REQUEST OF THE COUNTY ENGINEER

RAYNELLE SLATEN
COUNTY RECORDER
BY Frances Nicol
DEPUTY

1/4 CORNER
FOUND STONE MOUND
SET U.S.F.S. MONUMENT
FOUND G.L.O. BT S:
14" PINE SNAG S 2 1/2° E 114.3' (111.5')
Y PINE N 11 1/2° E 108.9'
SCRIBED 10" W. FIR S 2° E 86.0'
CORNER FALLS 50' NORTH OF ROAD.

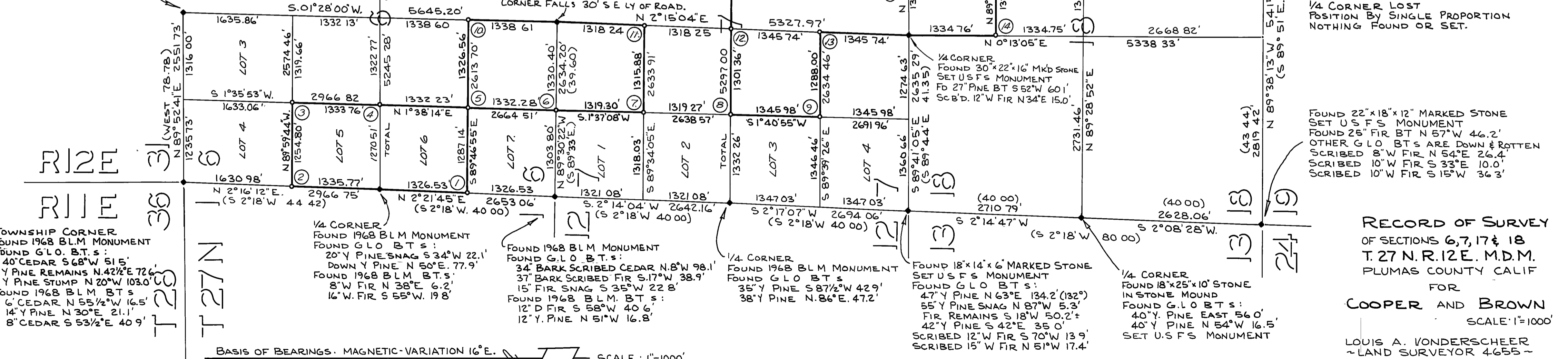
FOUND 22" X 10" X 14" STONE IN STONE MOUND
SET U.S.F.S. MONUMENT
FOUND G.L.O. BT S:
36" Y. PINE S 23° E 24.3' (S 26 1/2° E 24.0)
16" Y. PINE S 36° W 15.0' (S 35° W 15.8)
36" Y. PINE N. 9° E 13.2'

1/4 CORNER
FOUND 16" X 12" X 4" MARKED STONE- STONE MOUND
SET U.S.F.S. MONUMENT
FOUND G.L.O. BT S:
26" Y. PINE S 72° W 16.0'
22" Y. PINE N 82° E 13.0'

1/4 CORNER
FOUND STONE MOUND
SET U.S.F.S. MONUMENT
FOUND G.L.O. BT S:
Y PINE STUMP S 28° W 22±
Y PINE REMAINS N 50° E 27±
SCRIBED 13" W. FIR S 52° E 27.3'
SCRIBED 8" D. FIR N 83° E 15.6'
CORNER FALLS 30' SE LY OF ROAD.

1/4 CORNER
FOUND STONE MOUND
SET U.S.F.S. MONUMENT
FOUND G.L.O. BT S:
28" FIR STUMP N 46 1/2° E 48.8'
Y PINE STUMP N 84° W 75.2'
SCRIBED 8" D. FIR N 83° E 15.6'
SCRIBED 13" Y. PINE N. 28° W 42.7'

1/4 CORNER
FOUND STONE MOUND
SET U.S.F.S. MONUMENT
FOUND G.L.O. BT S:
19" W. FIR BT N 53 1/2° W 38.9'
SCRIBED 14" CEDAR S 84° W 15.0'
CORNER FALLS 200± SOUTH OF ROAD



LEGEND

- FOUND CORNER AS NOTED
- SET CORNER AS NOTED
- () G.L.O. DATA

U.S.F.S. MONUMENT INDICATED IS A 2 1/2" ALUMINUM PIPE 30" LONG WITH CAST 3" CAP AND CAST BASE WITH MAGNET. ATTACHED.

FOUND 24" X 10" X 12" MARKED STONE
SET U.S.F.S. MONUMENT
FOUND G.L.O. BT S:
45" W. FIR S 52° W 63.4' (S 44° W)
59" W. FIR SNAG S 27° E 39.6'
PINE REMAINS N 52° E. 21.1' (N 27° E)
SCRIBED 6" W. FIR S 84° W 14.7'
SCRIBED 6" W. FIR S 52° E 14.5'

1/4 CORNER LOST
POSITION BY SINGLE PROPORTION
NOTHING FOUND OR SET.

FOUND 22" X 18" X 12" MARKED STONE
SET U.S.F.S. MONUMENT
FOUND G.L.O. BT S:
26" FIR BT N 57° W 46.2'
OTHER G.L.O. BT S ARE DOWN & ROTTEN
SCRIBED 8" W. FIR N 54° E 26.4'
SCRIBED 10" W. FIR S 33° E 10.0'
SCRIBED 10" W. FIR S 15° W 36.3'

FOUND 18" X 14" X 6" MARKED STONE
SET U.S.F.S. MONUMENT
FOUND G.L.O. BT S:
47" Y. PINE N 63° E 134.2' (132°)
55" Y. PINE SNAG N 87° W 5.3'
FIR REMAINS S 18° W 50.2±
42" Y. PINE S 42° E 35.0'
SCRIBED 12" W. FIR S 70° W 13.9'
SCRIBED 15" W. FIR N 51° W 17.4'

1/4 CORNER LOST
POSITION BY SINGLE PROPORTION
NOTHING FOUND OR SET.

FOUND 18" X 25" X 10" STONE
IN STONE MOUND
FOUND G.L.O. BT S:
40" Y. PINE EAST 56.0'
40" Y. PINE N 54° W 16.5'
SET U.S.F.S. MONUMENT

BASIS OF BEARINGS - MAGNETIC - VARIATION 16° E. SCALE: 1" = 1000'

RECORD OF SURVEY
OF SECTIONS 6, 7, 17 & 18
T. 27 N. R. 12 E. M.D.M.
PLUMAS COUNTY CALIF
FOR
COOPER AND BROWN
SCALE: 1" = 1000'
LOUIS A. VONDERSCHER
LAND SURVEYOR 4655 -
PO BOX 898
REDDING CA
SHEET 1 OF 1
78019