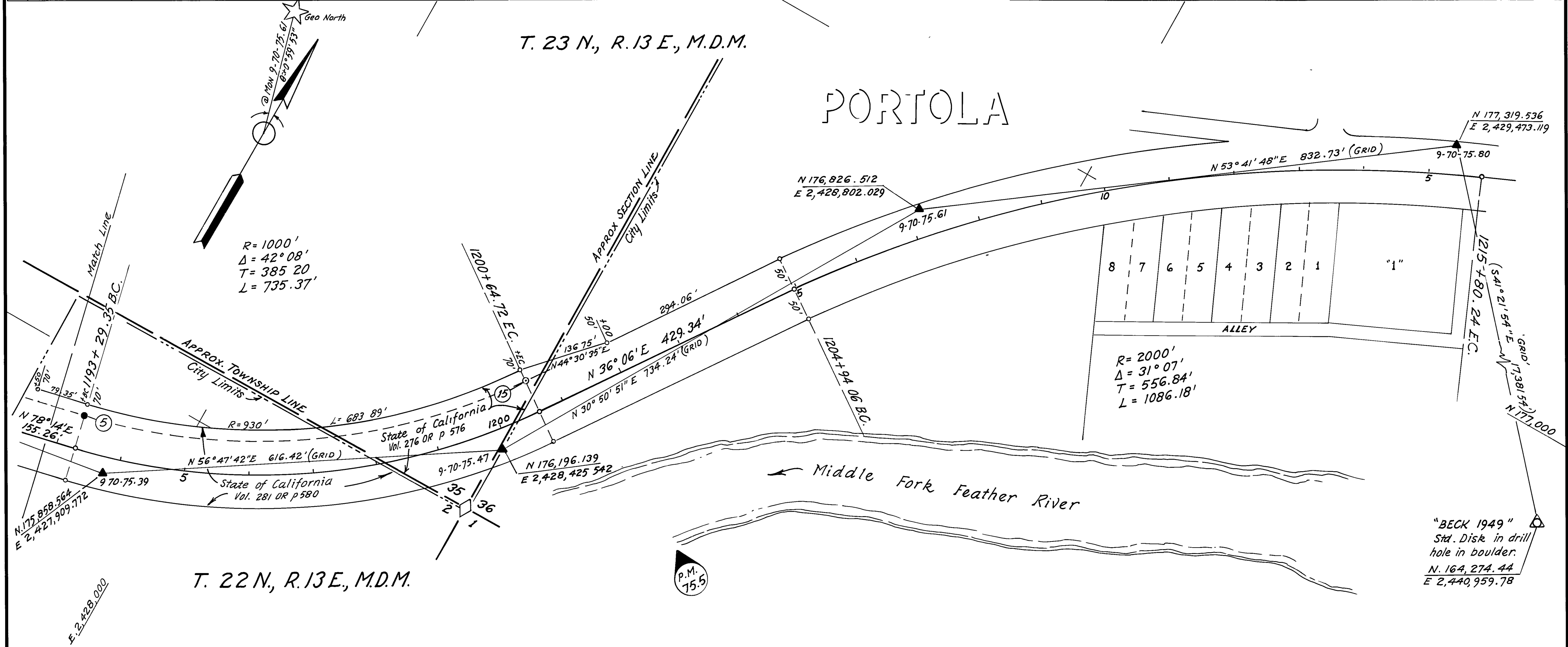


- FOUND POINTS -

SEC	PT	COORDINATES		DESCRIPTION	RECORDED AT			SEC	PT	COORDINATES		DESCRIPTION	RECORDED AT		
		NORTH	EAST		BK	OF	PG			NORTH	EAST		BK	OF	PG
2	5	175,917.795	2427,840.509	R/W Mon											
35	15	176,295.884	2428,406.095	" "											

- LEGEND -

- ▲ SURVEY MONUMENT, SET STANDARD BRASS DISK IN CONCRETE, STAMPED AS NOTED.
- PROPERTY MONUMENT FOUND AND REMOVED.
- ◆ SECTION OR FRACTIONAL CORNER, FOUND
- ◊ SECTION OR FRACTIONAL CORNER, NOT LOCATED.
- MONUMENT, SET T-BAR W/TAG, "DIST SURV ENGR"
- MONUMENT, AS NOTED.
- NO MONUMENT SET.
- ⊙ PROPERTY MONUMENT, FOUND.



EXCEPTING THOSE SHOWN AS "GRID" ALL BEARINGS ARE BASED ON THE CENTERLINE OF STATE HIGHWAY PER BK 65 DEEDS Pg. 140 AND Pg. 427

EXCEPTING THOSE SHOWN AS "GRID" ALL DISTANCES ARE SURFACE
 ALL CO-ORDINATES, BEARINGS AND DISTANCES SHOWN AS "GRID" ARE BASED ON CALIFORNIA CO-ORDINATE SYSTEM, ZONE 1. TO OBTAIN GROUND LEVEL DISTANCES, MULTIPLY "GRID" DISTANCES SHOWN BY 1.000227

GRID WAS ESTABLISHED FROM U.S.C. & G.S. TRIANGULATION STATION			
DELL 1949	N 173,266.25	SMITH PEAK	N 198,047.23
	E 2,416,922.25	1949	E 2,412,299.19
BECK 1949	N 164,274.44		N
	E 2,440,959.78		E

SUPPLEMENTARY INFORMATION MAY BE OBTAINED FROM THE DISTRICT OFFICE, SURVEY DEPARTMENT OR RIGHT OF WAY ENGINEERING DEPT, 1657 RIVERSIDE DR. REDDING, CALIFORNIA

STATE OF CALIFORNIA
 BUSINESS AND TRANSPORTATION AGENCY
 DEPARTMENT OF TRANSPORTATION
 DISTRICT 02
**RECORD OF SURVEY
 OF MONUMENTATION**
 IN PLUMAS COUNTY
 ON ROUTE 70
 PM 74.0 TO PM 75.8

PREPARED BY R. BREUNING, CHKD. BY R. HALL
 DRAWN BY A.H. Woodford, DATE MAY 1979
 SCALE: 1" = 100' SHEET 5 OF 5